

[View this email in your browser](#)

## Kia ora koutou,

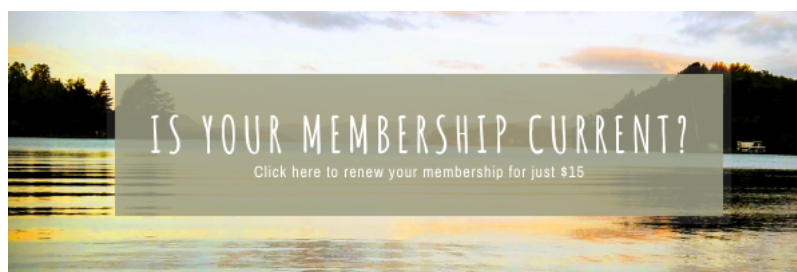
Meri kirihimete! Seasons greetings to all our Lake Rotoiti whānau. It's going to be a very different summer season at Rotoiti - likely very busy as those who have been isolated up north venture down to enjoy some freedoms under the new [Covid Protection Framework](#). We are all experts now at wearing masks, social distancing, hand washing & staying home when we're sick, so we won't remind everyone again. But we will say - be safe and make good choices for you and your whānau and our Rotoiti community. We have to learn to exist alongside this virus and the processes to keep us safe.

This newsletter has a lot of important information, including our **upcoming AGM** and how it will look different this year, **updates on the key issues** we represent the community on and the **results of our recent survey**.

Once again it has been a challenging year to be a volunteer on the LRCA committee - limitations for those being stuck in Auckland, meetings via Zoom and some contentious issues have meant our entire committee has put in a lot of hard mahi this year. We hope our email and [Facebook updates](#) and [regular news updates](#) on the website have been useful to keep you informed on all the areas we're across. We also have our summer printed newsletter on the way which should hit letterboxes just before Christmas. It will also be available in the stores around the lake so keep an eye out.

Ngā mihi o te kirihimete. Have a good Christmas and be well.

*From your LRCA committee*



## There's still time to renew your membership

Memberships came up for renewal on the 1st of October, so if you haven't had a chance to renew yet, please do so [HERE](#)

Remember, it's only \$15 per annum. For this fee we are able to represent our Rotoiti community on key issues such as sewerage schemes, lake structures, speed limits, rubbish and refuse and many more.

We are more effective with a larger membership and would like to see more

member, so if you've never become a paid member, now is the time. Please click [HERE](#) to do it online.

Becoming a member doesn't just help the committee to continue to support the community, it gives you a say on important issues.



## Notice of AGM

Every year we have our AGM on the 2nd of January at 10 am at the Pikiao Sports & Recreation Inc. in Mourea, and this year will hopefully be no different - except that we will be holding it with Covid protections in place.

This means that if it does go ahead it will be outdoors on the field. We will put up some gazebos and have an outdoor PA system. You will need to bring a folding chair and an umbrella for shade if you want to sit further afield for social distancing. You may like to bring your own picnic lunch so there can be social time after the meeting for those who wish to stay.

We will be following the Ministry of Health guidelines, and that will mean following all the "Traffic Light" restrictions in place at that time. We will also be attempting to stream the meeting online for anyone wishing to join but not able to do so in person.

In the event of rain or it being deemed unsafe, we will either postpone or go ahead online only. Updates on the status of the AGM will be emailed, on our website [www.rotoiti.co.nz](http://www.rotoiti.co.nz) and our [Facebook page](#) so please check on the morning of the 2nd.

For anyone wishing to raise a question before the meeting, please email [lra@rotoiti.co.nz](mailto:lra@rotoiti.co.nz).



## Our recent survey

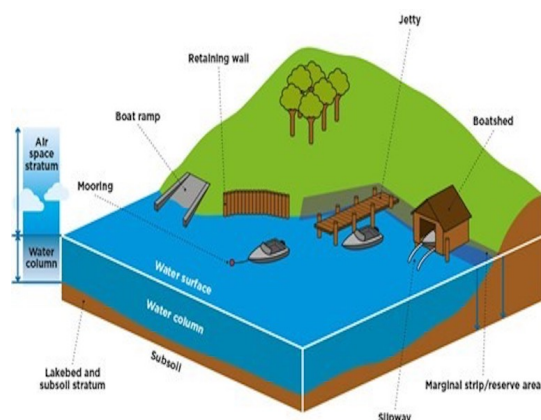
We sent out a survey a couple of months ago and got some great responses.

Support the community, to read our full updates and access the survey results, visit our website [HERE](#)



## Lake Level Resource Consent Variation

The application for the temporary variation to Rotoiti lake levels (one-off drop to RL278.85m) was further notified on 15 November 2021 to the owners of boat ramps and boat sheds along with jetty owners that were **not** included in the first round of limited notification. To read more about this you can visit our website [HERE](#)



## Lake Structure Consents

We provided a comprehensive update in October which you can read [HERE](#). We have not received a further update yet but when we do, we will upload it onto our [website](#) and [Facebook page](#).

However one very important matter has come to our attention. **Apparently a few owners have NOT made application for a new Resource consent**, which means their structure(s) are now unconsented.

They will not give us details of these cases for Privacy reasons. If your family **has not** made application, perhaps after change of ownership, this should be rectified urgently in order to comply. There could be serious implications if this is not remedied.

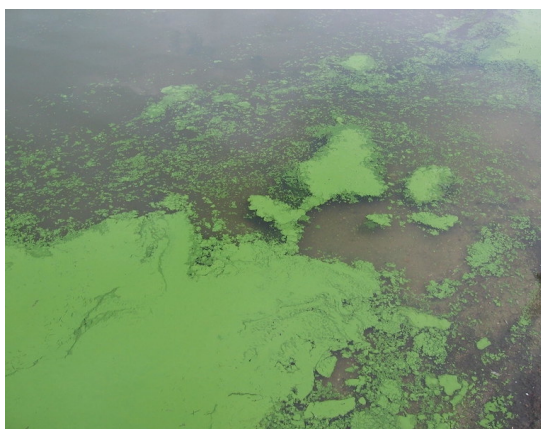
For guidance contact the BoPRC [HERE](#) or [email LRCA](#) for advice.



## East Rotoiti Sewerage Scheme

Council advise that the installation phase has commenced, with some on-site meetings with Fulton Hogan and Council staff undertaken at Gisborne Point to agree location etc. Once Building Consent is issued following agreement of the parties, installation will be scheduled.

See our latest website update [HERE](#) on how this process is operating, and details on how to arrange appointment for your site visit.



## Reducing Algal Blooms

With the recent Health Warnings of algal bloom in the Ōhau Channel and the western end of the lake (thankfully now lifted), we thought you might like some further information about this issue as we head into peak swimming weather.

You can read this [HERE](#)



## Weed Spraying

Lake weed is a problem in shallower water around the lake. Weed like Hornwart enjoys the cleaner water due to the wall in Ōkere channel that directs Rotorua

[Subscribe](#)[Past Issues](#)[Translate ▼](#)[RSS](#)

LRCA has regular discussions with LINZ (which has responsibility under Settlement Act), Boffa Miskell (manages the programme), and BoPRC (Biodiversity responsibilities), particularly to highlight the problem areas brought to LRCA attention by members, and to query when some areas are not sprayed. You can read the latest update and find out about the areas that were sprayed this season [HERE](#).

And for more information on the impact of dirty weed on the spraying regime click [HERE](#)



Copyright © 2021 Lake Rotoiti Community Association Inc., All rights reserved.