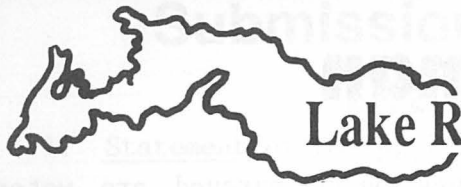
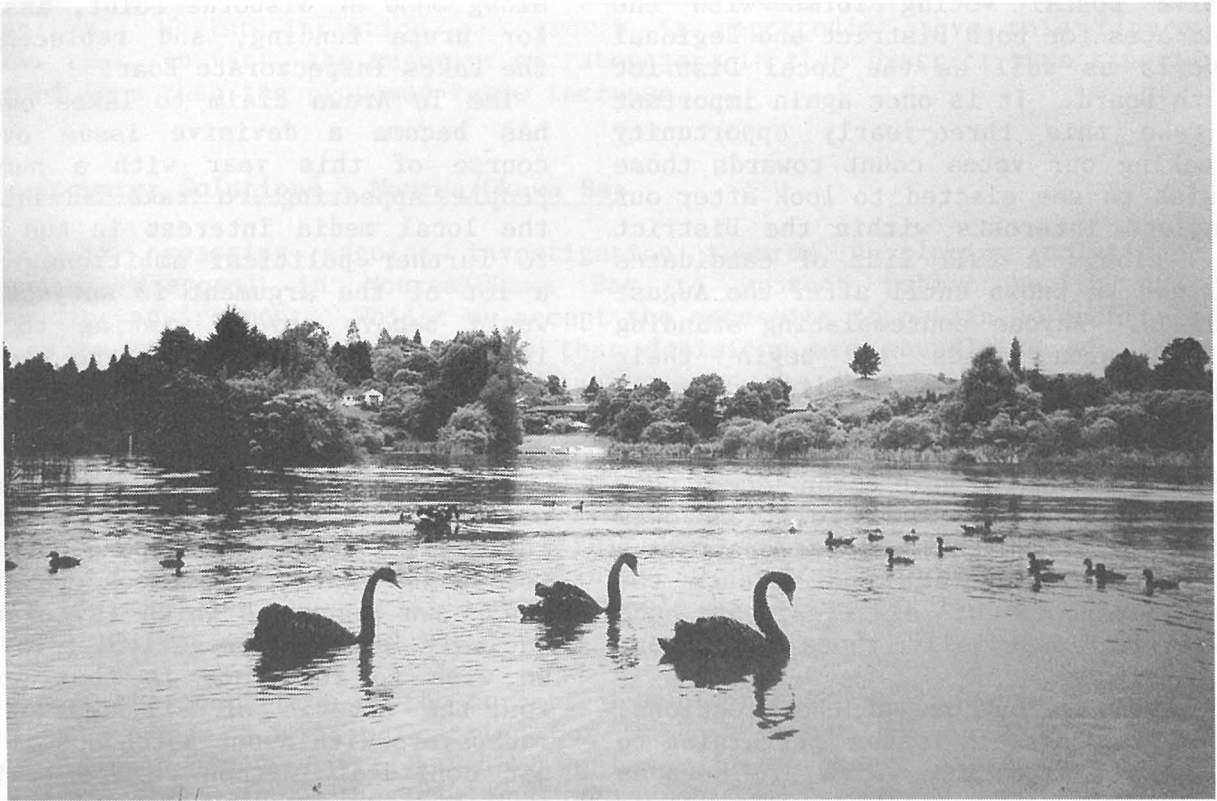


JUNE 2001



Lake Rotoiti Ratepayers & Residents Association



Okere Reserve - Te Akau Peninsular

Kia Ora Greetings from the Lake

As is usual at this time of year most of us have readjusted to the relative calm that prevails around the lake with the onset of winter, and take another opportunity to reflect some of the immediate past activities whilst continuing to look ahead at new and ongoing issues which have the potential to impact upon our environment, our lifestyles, and our resources. The prime objective of the Association, with the backing of its members, is to remain alert to any such changes and endorse or challenge them as deemed appropriate.

Recent stirrings in the media remind us that local body triennial elections are once again upon us with election day set down for 13 October. A number of candidates have already indicated their intentions with formal nominations opening 27 July and closing 24 August. We hope to provide a supplementary News Sheet during September profiling all candidates for the benefit of our residents, particularly absentee owners. We urge every eligible voter to exercise their democratic right in this election. Make your vote count!

Thanks once again to our major sponsor and advertisers and especially our financial members who number around 400. Subscriptions are due for 2001 with new subscribers most welcome. Your support remains of paramount importance. Sincere best wishes to all those who have an interest in Lake Rotoiti affairs.

Chairman:
Jim Stanton
Tel: 362 4690

Secretary:
Mary Stanton
Tel: 362 4690

All Mail: PO Mourea
c/- Happy Angler Store
Rotorua

Fax: 362 4690

From the Chairman

Mark down 13 October 2001 as Local Body Election Day. All ratepayers will receive postal voting forms with the candidates for both District and Regional Councils as well as the local District Health Board. It is once again important to take this three-yearly opportunity in making our votes count towards those we wish to see elected to look after our immediate interests within the District and Region. A full list of candidates will not be known until after the August deadline. Anyone contemplating standing for election needs to begin their campaign without delay. Already, media debate surrounding 'hot' topics such as the airport deficiencies and the lakes ownership wrangle have seen some show their hand early. Ultimately, we need decision makers who can demonstrate a willingness to protect and enhance the wider interests of all residents and ratepayers, especially those within our own territory.

Whatever the outcome of the elections, there are several issues pertaining to the Rotoiti community which are seen as warranting urgent attention. We, along with a number of individuals, have highlighted these in submissions to Rotorua District Council's Draft Annual Plan, due to be heard and deliberated upon towards the end of June.

Foremost amongst resident concerns is deteriorating lake water quality in some parts of Rotoiti, particularly Okawa Bay which has been subject to toxic health warnings over each of the past four years due to proliferating blue/green algal bloom outbreaks. Following a resolution at our January AGM, we sought specific views from Environment BOP regarding the state of Okawa Bay, reasons for the rapid decline in water quality, and what plans they had to remedy the situation.

The response included acknowledgement of the decline and an undertaking to carry out an immediate intensive sampling programme over the rest of this year as a pre-requisite to determining further action. This would be in conjunction with RDC and NIWA who are investigating groundwater flow and septic tank leachate depth distribution in the Mourea/Okawa Bay area. We expect firm decisions to be reached by the end of the year.

Other issues being pursued are water supply solutions for Mourea, footpathing along SH30 at Gisborne Point, assistance for urupa funding, and replacement of the Lakes Inspectorate Boat.

The Te Arawa claim to lakes ownership has become a divisive issue over the course of this year with a number of people appearing to take advantage of the local media interest in the subject to further political ambitions. Whilst a lot of the argument is subjective, it would behove anyone wishing to become involved in the debate to seek out factual information from the several authoritative publications available on the matter.

We get the impression on occasions that some resident groups around the lake are reluctant to seek our support, preferring to pursue matters of concern through their own resources which is, of course, entirely their prerogative. The point we wish to reiterate is that we exist for the benefit of all residents and ratepayers within our patch and if we are not confided in then we are restricted in acting on your behalf. We do have a strong voice in local body circles and we also have available a lot of useful information. But we can only help if you let us know about it!

We are aware that a significant number of members have expressed a desire for more frequent Association Newsletters which reminds us of that excellent publication, the West Rotoiti News which was forced into recess through a lack of human resources with the time required to produce it. Unfortunately, similar difficulties are experienced by most voluntary organisations and we are no exception. We would certainly look to increase the present frequency if the opportunity arises.

Incidentally, we continue to send out Newsletters to all known property owners within the Rotoiti boundaries regardless of their financial status with the Association. This has been the consensus feeling at several AGMs, the rationale being that we help act in the interest of the whole community and this was the best way to keep everyone informed and to encourage collective participation.

Submission to Rotorua District Council

Draft Annual Plan 2001/02

1. Statement of Rating Policies

We support in principle the proposed overall increase of 2.9 percent in rates for the 2001/02 Financial Year, and generally agree with the various levying mechanisms. Whilst inflation and growth is reportedly above this figure, we believe that, in fact, the majority of ratepayers in this District have experienced gains of less than the proposed rates increase.

2. Wastewater Solutions - Mourea/Okawa Bay

Council is proposing ongoing investigation towards developing solutions for wastewater disposal in Mourea/Okawa Bay to protect public health and the surrounding environment. Whilst we accept the necessity to obtain as much relevant data as possible in order to ensure that decisions are soundly based, there is increasing frustration within the community over the length of time being taken to reach these conclusions. Council is aware that some Okawa Bay residents, alarmed by worsening outbreaks of algal bloom in recent years, have formed an 'Action Group' with the express purpose of seeking urgent action to implement a reticulated scheme aimed at eliminating direct nutrient discharge from septic tanks into Okawa Bay. There are significant factors supporting this stance. Notwithstanding, this Association continues to endorse actions which are deemed to provide the most beneficial and affordable solutions for the District and the Mourea/Okawa Bay community in particular.

We support the completion of the current investigations being undertaken by Council along with those now being carried out by Environment BOP in respect of water quality within Okawa Bay. However, we have the strongest expectation that the outcome of these investigations and consequent decisions on courses of action be reached by the end of 2001 as indicated by both Councils. To this end, we note that existing budgets have now been projected out to 2003/04. Whilst we understand the likely timeframes required for land acquisition, statutory obligations, construction works etc, it would be reasonably anticipated that these should be concluded well in advance of the proposed projections.

WE REQUEST THAT COUNCIL SET A FIRM OBJECTIVE OF CONCLUDING PRESENT INVESTIGATIONS TOWARDS DEVELOPING APPROPRIATE WASTEWATER SOLUTIONS FOR MOUREA/OKAWA BAY BY THE END OF 2001 AND PROCEED WITH PLANS FOR PROPOSED IMPLEMENTATION AS A MATTER OF EXPEDIENCY.

'THE HAPPY ANGLER'

S.H. 33, MOUREA Ph: 362 4709
(Open 7 days)

- Pizzas/Chicken Schnitzels/Potato Wedges
- Cakes/Biscuits
- Sandwiches/Filled Rolls
- Grocery Requirements
- Post Office
- Videos
- Fishing licences/Lures/Flies

For Lake Property Sales contact The Professionals

If you are looking for a proven sales record with confidentiality assured - contact us at McDowell Real Estate. Our clients will receive the finest service in Real Estate.



BETTY SHEPHERD
Lakes Specialist

A/H (07) 345 9162
Mobile: (025) 997 711
20 Million Dollar Club
Top 10% NZ Wide



The Professionals

McDowell Real Estate Ltd MREINZ

1290 Eurera Street, Rotorua
Ph. (07) 348 4159 Fax (07) 347 7071

Submission to RDC Draft Annual Plan cont...

3. Water Supply - Mourea/Okawa Bay

Council has retained a budget of \$100,000 to assist in the improvement of water supplies to interested residents of Mourea where existing supplies pose a potential health risk. Recently, Engineering staff have produced a report which outlines possible solutions to these problems. We acknowledge the contents of this report and intend to relay the suggested options to local residents in our upcoming Newsletter.

The 14 months taken to reach the current position have been frustrating for affected residents and, whilst immediate progress may now depend on their response, we need Council's commitment towards implementing resolutions without further delay. It should be noted that the 'permanent' option proposed, based on estimated costs, would require an additional contribution from general rates. We trust contingencies will be available to accommodate this within the current financial year in the event that this option is chosen.

WE ENDORSE THE PROPOSED COMMITMENT TO ASSIST IN ESTABLISHING IMPROVED WATER SUPPLIES FOR RESIDENTS WITHIN THE MOUREA COMMUNITY AND ACKNOWLEDGE THE RECOMMENDED OPTIONS FOR ADDRESSING EXISTING PROBLEMS. IT IS NOTED THAT \$100,000 HAS BEEN BUDGETED FOR THIS PURPOSE AND REQUEST THAT COUNCIL MAKE CONTINGENCY MONIES AVAILABLE WITHIN THIS FINANCIAL TERM TO MEET ANY SHORTFALL WHICH MAY OCCUR IN THE EVENT THAT A PERMANENT SUPPLY IS OPTED FOR.

4. Pedestrian Access - SH30 Gisborne Point

Over a number of years, we have expressed the need for some priority to be given to improving the public accessway alongside SH30 at Gisborne Point, between Wharetoroa Drive and Emery's Store. The potential safety hazards for pedestrians in this area have already been well documented. Recent narrowing of the road berm and ever increasing traffic usage of this Highway only serve to enhance the likelihood of a tragedy. The ongoing concerns of local residents were endorsed once again at a meeting convened earlier this year.

It should be recalled that a review of the Rural Footpath, Kerb and Channeling Policy was carried out around 1995 with the introduction of a revised priority points scoring system along with a prioritised listing of local streets including State Highway sections which served significant local communities. Whilst this particular section of SH30 was ranked some way down the list, we believe it is nevertheless pertinent to revisit the issue of resident concern in this area.

Whilst we acknowledge the present level of funding and allocation of priorities to rural roading improvements, as well as an apparent lack of documented accident 'statistical data' for this stretch of Highway, we urge Council to review the matter with a view to implementing some enhanced pedestrian safety measures in this location. Gisborne Point contains about 100 ratepaying properties and, like most lake communities, caters for a large influx of visitors over the summer and holiday periods. There is also a school in the vicinity to which children have to travel to and from and a Marae complex.

WE REQUEST THAT COUNCIL URGENTLY REVIEW THE DEFICIENCIES IN PEDESTRIAN ACCESS ALONG SH30 AT GISBORNE POINT AND CONSULT WITH THE LOCAL COMMUNITY OVER OPTIONS FOR REMEDIAL ACTION.

Submission to RDC Draft Annual Plan cont ...

5. Funding for Maintenance of Urupa

We have over the past several years broached the subject of assistance in the maintenance of urupa located within the Rotorua District. The rationale behind this is that, whilst urupa are invariably located on non-rateable privately owned land and generally cater for local families only, they nevertheless provide significant relief to the provision of public land for the purpose of burial, and furthermore are usually open to visitation by many other members of the public outside of the immediate hapu. In addition, current Council Funding Policy provides for maintenance of 'open space' within public cemeteries from general rates. Under the circumstances, Council assistance in the form of some funding/services to improve and maintain access is considered justifiable and appropriate.

WE REQUEST THAT CONSIDERATION BE GIVEN TO PROVIDING SOME FUNDING RELIEF FOR THE UPGRADE AND MAINTENANCE OF ACCESS TO LOCAL URUPA.

6. Lakes Inspectorate Boat

In submissions to last year's Draft Annual Plan, we requested that Council expedite replacement of the Lakes Inspectorate boat which had first been proposed in 1998. Later in the year we lamented the fact that issues relating to finalising who was to undertake maintenance, and determining the relevant funding responsibilities of RDC and EBOP were taking forever to resolve. In response, it was indicated that decisions were anticipated early in the New Year. We are pleased to note that EBOP are to contribute \$180,000 towards navigation and safety requirements of the Rotorua lakes. However, recent Council Reports suggest that there remains indecision over who will undertake the maintenance role. We accept the type of replacement vessel is dependent on resolving this issue. We find it difficult to accept the protracted delays in reaching this decision. We again reiterate our desire to see the expeditious replacement of the current boat.

WE REQUEST THAT COUNCIL EXPEDITE THE ACTION REQUIRED TO DETERMINE THE MAINTENANCE ROLE FOR THE ROTORUA LAKES AND UPGRADE OF THE LAKES INSPECTORATE BOAT.

ROTOITI LAKE CRUISES

M.V. HINEKURA



Your hosts, Ted & Gael Boucher
Operating from Okawa Bay Lake Resort

- * Fishing (our speciality)
- * Scenic Charters
- * Barbecues
- * Picnics
- * Hot Pool Bathing and Evening Trips

*Departs Okawa Bay Resort
and other sites by arrangement*

Business Phone (07) 362 4599 Home Phone (07) 362 4815

c/- P.O. OKERE FALLS, ROTORUA, N.Z.

LAKE INSPECTORS REPORT *Dave Pilkington*

Boat numbers on Rotorua District lakes continue to increase with Lake Rotoiti by far the favourite destination for out of town visitors. Lake Inspectors are constantly dealing with people who have come to enjoy the freshwater recreation for the day. They profess to be ignorant of the requirement to observe maritime rules and lakes by-laws. These boat operators seem to be the main reason for the consistently high number of people requiring 'education' about safe boat operation. As illustrated by the statistics below, the figures for the last two years are virtually identical.

	1999/2000	2000/2001
Boats too fast close to shore	145	154
Jet Skis too fast close to shore	41	34
Skiing too fast close to shore	32	15
Skiing off beach	6	9
Skiing in restricted area	9	10
Dropped water ski	21	22
Improper use of ski lane	22	23
Trolling over busy ski lane	2	5
Skiing without an observer	27	15
Bow riding	24	38
Lack of navigation lights	63	50
Lack of navigation rules	-	9
Improper use of access lane	-	10
TOTALS:	392	394

Navigation Lights

Failure to display navigation lights is a major concern. Some people are reluctant to switch them on, arguing that they interfere with their night vision. By far, the prevalent fault is a lack of an all round white/stern light. Of particular concern is the number of people using dinghies at night with no lights at all. **ALL BOATS MUST DISPLAY LIGHTS FROM SUNSET TO SUNRISE!**

Arrangement of each boat's lights is important because they indicate your presence, they let you know where another vessel is coming from, and they also let you know what type of vessel is approaching. Only when correct lights are shown can vessels determine who has the right of way and avoid collision.

Boat Ramp Parking

Problems are being caused by inconsiderate parking close to boat ramps. This is not always a vehicle and boat trailer, but these are the predominant nuisance. At some ramps, particularly at Waipuna Landing (Delta), anglers are parking their vehicle inconsiderately and walking to their fishing spot. In all of these situations, a short walk is all that is involved in parking vehicles and trailers far enough away from the ramp to allow unhindered access to other ramp users.

DEANS CANVAS & UPHOLSTERY CO



Specialists in:

- * Window Awnings
- * Caravan Awnings
- * Trampoline Mats
- * Tarpaulins
- * Boat Canopies & Covers
- * Marine Upholstery
- * Furniture Upholstery
- * Calf Covers
- * All Repairs & Restitching

Rotorua: Colin Deans (07) 345 3415 A/H

36 White Street . Rotorua (07) 348 7209

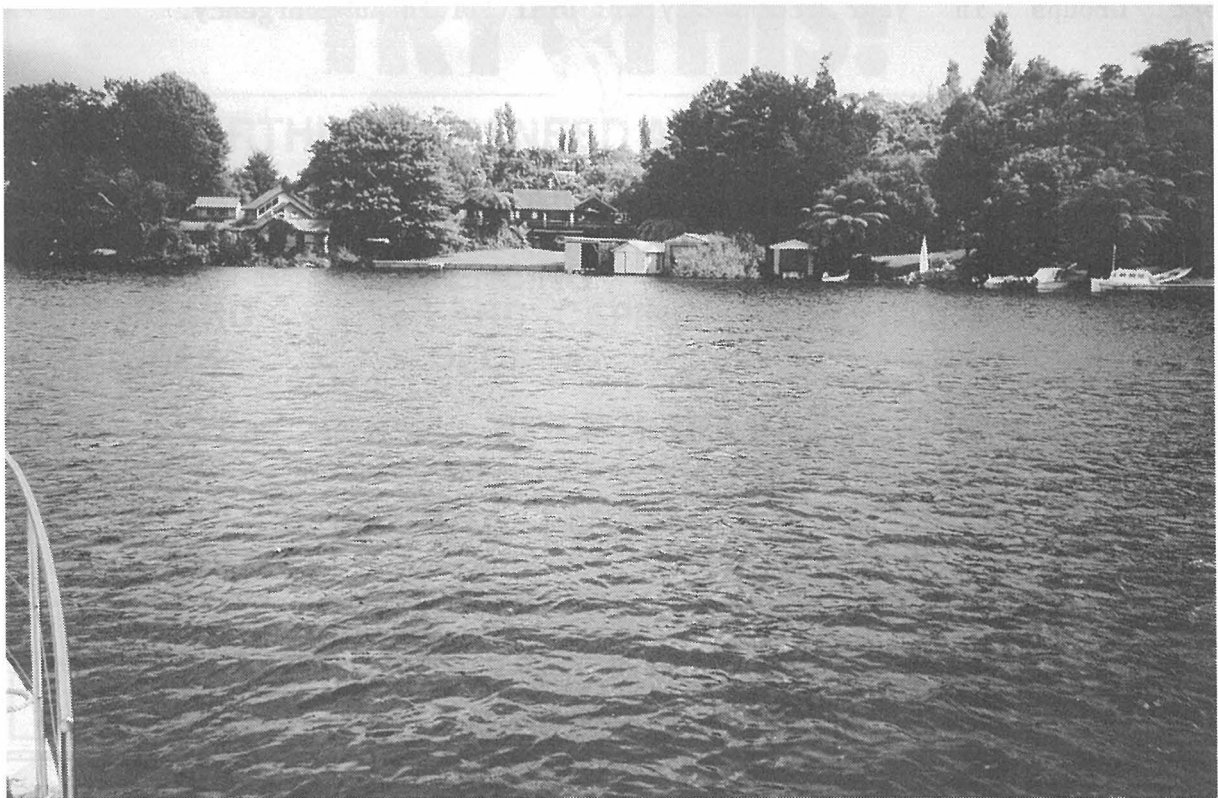
LAKE ROUNDABOUT

Ohau Channel Camp Redevelopment. Now re-named Marama Point, earthworks and construction of residential units were commenced earlier this year with many well on the way to completion. Resource Consent for widening of the canal entrance was also granted. The owners state that around 50 of the 80 available unit titles have been sold so far with interest from both national and overseas buyers. A 15 to 20 metre esplanade strip will eventually provide public access to both Lake Rotorua and the Ohau Channel.

Lakes Management Strategy. An updated copy of the Draft LMS was received earlier this year which outlined 18 tasks to be addressed through the establishment of 6 small working groups. These groups would be expected to work with persons and organisations who had indicated an interest in contributing to particular tasks or projects. We have accepted the invitation to participate in those areas of direct interest and requested updates on other parts of the project as they come to hand. The recent Crown offer in respect of the 'Lakes Claim' suggests that the LMS may be superceded by a Lakes Forum Group set up by statutory legislation.

BOP Trailer Yacht Squadron Hard Stand. Submissions to this proposal were heard earlier this year. The application was approved with a road boundary adjustment agreed to. RDC's Hearings Committee instructed that a wash down facility be included 'to reduce the potential to transfer weed infestation etc from one waterway to another'. BOPTYS had agreed to exclude this in their application in recognition of likely detrimental effects on the immediate environment. It was our impression that the facility was to allow for semi-permanent storage of members yachts!

On-Site Effluent Treatment Regional Plan. Submissions to the Draft Plan Change No. 1 have now been summarised by EBOP and circulated for further cross submissions as required. We, along with Lake Okareka RRA as well as RDC have requested a number of amendments which reflect ongoing concerns over the management provisions, particularly in respect of statutory responsibilities, co-operation between EBOP and RDC, re-assessment of the 'target areas' and strategies designed to monitor on-site treatment systems within those areas, and more flexibility in relation to system design and inspection regimes.



Te Weta Bay



POLICE
Nga Pirihimana O Aotearoa

BLUEPRINT

Crime in your area hasn't caused us any major concerns recently although there has been the odd niggly incident or two that we have had to contend with. The Rotorua Police are making a concerted effort to combat burglaries and thefts from cars by concentrating on areas affected and targeting known offenders. From a prevention point of view, we need your help by becoming more security conscious and phoning the police when you see anything unusual.

Something which did bother me recently was an incident involving the destruction of several letterboxes, road signs and other property late one night. Nothing unusual perhaps, but I did hear of one resident who heard the commotion. Not only did he not get up to see what was happening, but he didn't even bother to call the Police. By doing this, we might have caught the offenders and his fence might still be standing.

We could do with more Neighbourhood Support Groups in your community.

I am sure that members of these groups feel more confident when reporting criminal activity and suspicious behaviour. I think they also have this feeling of security by knowing that they have the support of the Police. Every now and then we will acknowledge members in our own little way for doing something special.

Here are a few classic reasons why people do not call the Police straight away ... "I thought the Police were asleep. I didn't want to wake them up" ... "I wasn't sure if it was breaking glass I heard or if it was in my dreams" ... "I wanted to wait until your office opened up again on Monday" and "I didn't know what the phone number was".

At least some of us have got a life. The Police look forward to hearing from every one of you when you see or hear something suspicious, not when the crime has happened and it is too late.

Contact Te Ngae CPC Ph 345-3453 or Dial 111 in an emergency.

Senior Community Constable George ANARU

Mobile Library Calendar

Tuesday Route 2000/2001

Fortnightly from 26 June 2001

08.50 - 09.15 Wharetoroa Drive
09.30 - 10.00 Rotoma School
10.05 - 10.25 Rotoma Store
10.30 - 10.50 Rotoiti School
11.20 - 11.45 Okere Falls Store

The Mobile Library carries a good selection of

- * Adult and Childrens
- * Fiction
- * Non-fiction
- * Large print
- * Magazines
- * Talking books
- * New Zealand Fiction & Non-fiction
- * Music Cassettes and C.D.'s
- * Videos

Special requests can be made for specific items.

LAKE ROUNDABOUT cont...

Lake Levels. Earlier in the year, we again had cause to question Environment BOP's lake level management, or more precisely the continued inaccuracy of readings from the Okere Telemetry Tower. We agreed to take daily readings from the Okawa Bay marina over several weeks and submit these to EBOP for comparison. The results produced an acknowledgement from EBOP that there were significant discrepancies and that they were fairly consistent, the outcome being that they would establish their own recorder at Okawa Bay marina as the best option for long term management. This has now been up and running for about 6 weeks and the improvements have been obvious. Thanks at last EBOP!

Environmental Enhancement Fund. Last year, EBOP established this Fund with \$400,000 available to individual and group applications for environmental projects within the community which

met the stringent criteria required for approval. This year's application round closes next month so anyone who has a worthwhile project and wishes to access the Fund should seek the relevant Application Forms from EBOP now.

Rotoiti Storm Damage. a rainband on the night of 12 May last deposited about 160mm of rain onto the Tikitere/Rotoiti area causing widespread mayhem. Peters Hill construction site was damaged, and in addition 25 slips were recorded between Tikitere and Gisborne Point. Most were able to be cleared within days but three require significant works for full restoration. The total cost of this work will be in the region of \$450,000 and will be met by Transit NZ. In some instances, final restoration may have to wait until spring. This applies to the Peters Hill project and includes construction and sealing of the passing lane.

TRY THIS!

FOR EVERYTHING YOU NEED AT THE LAKE THIS YEAR

- TIMBER
- HARDWARE
- BATTS
- GIB BOARD
- TRUSSES
- PRENAILS
- MOULDINGS
- FENCING
- LANDSCAPING
- DECKING
- NAILS
- HARDIES PRODUCTS
- PARTICLE BOARD
- PLYWOOD

SEE THE TEAM AT

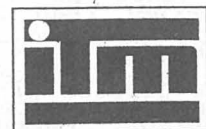


ROTOMA TIMBER & HARDWARE

163 LAKE ROAD - ROTORUA

PH 07 347 7023 FAX 03 346 0768

or email us at rotoma@xtra.co.nz



Lakes Water Quality Society (incorporation pending)

formerly known as The Lakeweed Control Society

Secretary

Mrs E M Miller
91 Te Akau Road
R D 4
Rotorua
Ph. 07 362 4747

Treasurer

Brentleigh Bond
P O Box 2008
Rotorua

Chairman

Ian McLean
R D 4
Rotorua

Greetings!

As you will see from our letterhead above, the Lake Weed Control Society changed its name in early 2001. We are also taking steps to become an Incorporated Society and our membership has risen to over 300. The reason for these changes?

Committee and members alike have been concerned by the increasing frequency of cyanobacterial (blue-green algae) blooms on Rotoiti, Rotorua and Rotoehu in particular. We were also concerned that very little scientific research effort had been going into the Rotorua lakes in recent years. This lack of research into lakes is nation-wide. We decided to do something about it by hosting a symposium- **'Rotorua Lakes 2001 - A symposium on research needs in the Rotorua Lakes'**.

The Rotorua Lakes 2001 Symposium, jointly hosted by the Lakes Water Quality Society and the Royal Society of New Zealand (Rotorua Branch), was held on 22-23 March 2001. The objective of the Symposium was to re-focus scientific attention primarily on the Rotorua lakes, but also on New Zealand lakes in general. It sought to present current world knowledge on cyanobacterial blooms, lake eutrophication (nutrient enrichment) and management (including the restoration of lake water quality), to sum up current knowledge about the many lakes in the Rotorua district, and to identify research priorities.

The Symposium was the first of its kind in New Zealand for over a decade, and the most comprehensive ever held on the Rotorua lakes. The Symposium was made possible by a major grant from the Bay of Plenty Community Trust. Assistance or support also came from Rotorua District Council, Environment BOP, Forest Research, Dept of Conservation, Royal Lakeside Novotel and Reesby Coachlines Ltd.

Approximately 120 persons attended, representing Crown Research Institutes, government agencies, universities, local authorities from around NZ, politicians, consultants and the interested public. A half-day trip to four of the lakes preceded the Symposium. Arapeta Tahana of Te Arawa opened the Symposium with a formal mihi and Karakia, then scientific papers were presented for the rest of the day. On the second day, workshop discussions determined research needs and priorities, and the findings of the four workshop groups were put together.

Papers at the Symposium re-emphasised themes that have been central to the management of Rotorua lakes such as the significance to lake eutrophication of land use in the catchment; re-examined questions that have been around for decades such as the value of seeking to limit nitrogen inputs; and highlighted issues that have received relatively little past attention such as the nature and role of sediments, and detection and monitoring of cyanobacterial toxic blooms.

The keynote speakers were Dr Rod Oliver of Australia, and Professor Wilhelm Ripl of Germany, both of whom emphasised the importance of how the lakes worked as a whole, rather than individual detail. Dr Oliver has researched the ecology and physiology of micro-algae and cyanobacteria for 20 years. Professor Ripl has designed several lake restoration projects and has undertaken various international consultancies on water quality remediation.

The strong consensus of Symposium participants was that research in recent years has been inadequate and that there are significant issues needing research if the values of the lakes are to be preserved and improved. Relevant comments giving background to the research needs included:

- * There is little sense of a picture of how these lakes function, in either their natural or modified states.
- * Water quality is the Number One issue, superceding lakeweed.
- * Integration and ready availability of information is needed.
- * There is a need to set realistic objectives for each lake.
- * Lakes respond to what is happening in their catchments, and that must be linked to what is happening in the lakes.
- * There is a need to understand lake processes.
- * Responsibilities for funding and implementing solutions to identified problems are not clear.
- * An appropriate funding level is not established.
- * Those living and working with lakes need to accept that there is inherent uncertainty associated with lake systems.

Although the Symposium was designed to help clarify research needs, and future research will allow remedial measures to be better targeted and more cost effective, some of the papers suggested ways in which existing knowledge could be applied now. Principles already applied in the upper part of the Kaituna catchment scheme, in the diversion of Rotorua city wastewater away from the lake, and the protection of lake and stream margins at Lake Rotoehu were endorsed by leading scientists at the Symposium. Apparent decline in water quality in several lakes clearly shows that this work needs to be extended.

The response to the Symposium was far beyond the most hopeful expectations of the organisers, especially the degree of interest and participation of scientists, local authorities and interested members of the public. The papers and discussion were of high quality and stimulated attention on eutrophication and knowledge of systems and processes affecting the Rotorua lakes. A variety of research proposals and projects are expected to result from the Symposium.

The major fields where research is needed are sediments, nutrient changes and availability to other organisms, cyanobacterial toxins, food webs, sustainable management and remediation, and plant and animal pest management. The role and nature of sediments was a new emphasis. The uncertainties regarding behaviour of cyanobacteria, monitoring of cyanobacterial levels, and the various authorities' response were of major interest to the public. Development of strategies for early detection and elimination of new plant and animal threats to the lakes was proposed. An overall approach was strongly advocated, encompassing catchments and their land-use, and sediments, as well as what is happening in the water of the lakes.

The encouragement from the Symposium for a goal of restoration of at least some lakes, rather than just conservation of their present degraded state was an important proposal, and we would support a pilot project in a small lake or enclosed bay. The need was indicated for development of a co-ordinated approach to lake management and research, with public and scientific involvement in setting priorities. It is encouraging to note that local authorities are taking a renewed interest in the well-being of the lakes. Environment BOP are in the process of setting up the endowment of a Chair in Lake Studies at Waikato University - a very worthwhile response indeed.

Meanwhile, the Society has also been actively involved in other issues. Conditions of the application by RDC to renew their Resource Consent to discharge the treated wastewater from Rotorua city into the Whakarewarewa forest is still under discussion, and we retain our interest in ensuring that aquatic weeds are managed so that they do not become a large scale problem. **Remember that our active Society always welcomes new members - our subscription is still \$5!** Please send with name and postal address to our Treasurer at the address above.

PARADE OF THE WOODEN BOATS

SUNDAY - 3 FEBRUARY 2002

Note that the date has been set for the fifth Parade of the Wooden Boats. Numbers entered in the parade have steadily increased - up to 100 entries are expected for next year's day on the lake.

This day is now firmly established as one of the largest inland waterway regattas on the New Zealand boating calendar. It has also established Lake Rotoiti as a leading 'home' for vintage lake launches, as evidenced by the number of beautiful new (old) boats arriving each year. Enquiries have been received from other areas like Auckland and Nelson where people wish to start the same idea.

Next year's principle judge will be John Welsford - an internationally recognised small boat designer. Some changes to the judging categories will be made. Thank you to those many boaties who offered suggestions with regard to the parade. They will be taken 'on board' and Please! if you have any other ideas, call Brentleigh Ph 362-4700 or Lindsay Ph 362-4876. Serious planning will start around early October.

Once again, many thanks to everyone - sponsors and helpers who rose to this special occasion on our beautiful lake last February. **Keep 3 February 2002 Free!!**

Refuse Transfer Station

Rotorua District Council has recently been granted the necessary consents to construct and operate a Refuse Transfer Station in Okere Road. A number of conditions have been attached to the consents, the most significant from our point of view being a requirement for all roading alterations at the SH33/Okere Road intersection be completed prior to commencement of the operation. Other requirements include warning signs to be erected on SH33 to indicate the location of the Transfer Station, and Skip Bins to be covered if refuse is stored on site overnight.

We, along with several Okere Road residents and property owners made verbal submissions at the Hearing, with some of our requests gaining acknowledgment within the conditions imposed. It should be noted that there will still be further consultation with our community over operational matters such as opening hours etc.

RDC have recently appealed part of the decision to the Environment Court, ie the requirement to cover bins overnight which they claim is impractical and unreasonable and conditions relating to roadside cleanliness, review of roading improvements, and erection of signage on SH33. Submitters should consider responding to these appeals in due course.

THE MOST EXPERIENCED 'LAKE PROPERTY SPECIALISTS' IN THE DISTRICT

FOR EXPERT AND CARING REAL
ESTATE SERVICE ENQUIRE TODAY

LAKE ROTOITI
and Lakes Okareka, Tarawera,
Rotorua, Rotehu & Rotoma

Joan Piesse AREINZ Brian Piesse

Phone Office 0-7-348 5058
A/hrs 0-7-362 7755 (Ph/Fax)
Mobile 025 952 227

Cnr Hinemoa & Amohia Streets,
PO Box 77, Rotorua
DX No. JP30040;
Facsimile: 0-7-348 2381

L.J. HOOKER™

Nobody does it better™



AT THE OKERE FALLS STORE...

LIQUOR STORE

**FAIRLY
FAST FOOD**

FISH, CHIPS, BURGERS, ETC.

**Hours 8am - 7pm 7 Days
Orders Ph (07) 362 4854**

UNDER OLD MANAGEMENT

by Boat or by Car, you know where we are



SMALL SCALE SOLUTIONS TO WATER SUPPLY PROBLEMS AT MOUREA

On 27 March 2000, Rotorua District Council, following a number of objections from Mourea and Okawa Bay residents resolved not to designate the area as a 'Water Supply Area'. It was further resolved that a detailed investigation be carried out to determine the individual needs for potable water within Mourea central to ascertain whether there were options other than a community-wide scheme.

Council has now produced a Report which summarises the results of investigations carried out by RDC and makes suggestions as to how the water supply problems of various residents in the area can best be solved.

A house to house survey was carried out to confirm the actual water supply issues in the study area. To determine alternative options for those properties with problems, the area was divided into a number of zones. These zones identify properties with no problems as well as groups of properties where water supply problems could be solved by creating neighbourhood schemes. A layout plan is attached to the Report.

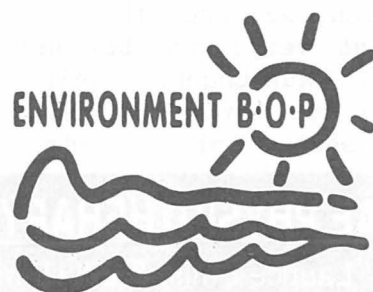
The investigation indicated that it would not be possible to solve problems for some zones through neighbourhood schemes due to unsatisfactory groundwater and therefore limited community supply schemes have been evaluated. One minimum option considered is a temporary tank filling scheme where it is assumed that the administration and maintenance will be the responsibility of the community with technical support from Council, as is presently the situation with the Whirinaki scheme. Another option considered is a permanent rural water supply scheme.

The survey revealed that two areas within the community already had working 'user operated' schemes supplying 18 and 19 homes respectively (These are the Parua and Pukahukiwi schemes). Either of these could be improved if desired. Other options include on-site rain tanks, individual bores and pumping from the lake. Properties in 8 of the 12 zones have access to good groundwater on-site or could have their water supply problems solved by the establishment of a new bore or connection to a neighbour's scheme. The remaining

properties are unlikely to find good bore water in their area and should rely on off-site sources such as a reticulated tank-filling system or a rural community water supply scheme. Property owners with water supply problems outside the areas covered by the existing user-operated schemes, and the proposed off-site source schemes should therefore be encouraged to improve their existing on-site systems or look at options for joining with their neighbours. As a last option, some of these owners may be able to join the public scheme where pipelines run past their properties.

Opus consultants were engaged to provide geological profiling of the area during which four bores were drilled at various locations where they might be of use as a water supply source. However, only one of these (at Okawa Bay Marina) has proven suitable for providing good quality water.

Details of costing implications and funding options are contained within the Report. It was recommended that the Report be circulated to all interested parties for their comments on the proposed solutions before finalising and presenting to a Works Committee meeting. **This Report and a more detailed Technical Report is available on request from the Council - contact Adrian Vosloo (Utilities Engineer) Ph 348-4199.**



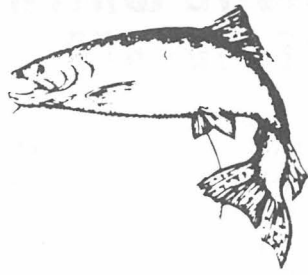
Bay of Plenty Regional Council

Quay Street, P O Box 364
Whakatane, New Zealand

Telephone (07) 307 2545
Outside Whakatane District but within
BOP - Call free on 0800 ENV BOP
0800 368 267
Facsimile (07) 307 2544
International Dialling Code (0064 7)

POLLUTION HOTLINE 0800 73 83 93

ANGLERS' CORNER



Contrary to some 'expert' fishing reports, Rotoiti over recent years appears to have lost it's 'Trophy Lake' designation. Exceptions may be the fly fishing purist, or the glow-bugging or jigging meat hunter. In local memory, it is hard to recall a period when so many small or undersized fish have been caught, even during ideal weather conditions. Remember the great fishing when showers and old-fashioned frosts prevailed.

Lake Rotoiti is approximately 16 kms in length, and most fish releases are made at the eastern end. For several years, Eastern Region Fish and Game were making boat releases at the western end. Within a year, the results were apparent and much improved fishing ensued. Much to the chagrin of local residents, this practice was discontinued when Len Newman retired from the hatchery, so we trolling 'westies' were back in the doldrums.

The weed beds do not appear to be as lucrative as they once were, and on cold windless mornings, there is still a preponderance of fine green algae around the Delta and Wairau Bay area. One cannot help wondering if there is a connection, although the fish are still there but very hard to entice. Maybe if the Ohau Channel Weir and Okere

Gail Boucher

Control Gates no longer existed, nature could take over once again and be able to 'flush it's toilet'.

Past overtures to have Rotoiti opened for all-year round fishing have come to nought, and as our lake is governed by so many outside influences maybe it never will. One can understand Tarawera as the main source of hatchery stock, or Okataina, in it's lovely pristine state having a three-month spawning rest, but surely Rotoiti could be excepted, with it's lack of streams.

Personally, I do not know of anyone who supported the use of lead lines, but they are now permissible. There is even talk of paravanes and other such methods being introduced. Surely it would be preferable to have the lake open all year round, and maybe cut the limit bag to three during those extra months.

It is discouraging to hear visitors say that they will carry on to Taupo if they can't fish one of the 'big three' in Rotorua. It must be obvious that selling day licences is of prime importance to ERFGC revenue, whilst putting little pressure on fish stocks, so **please Fish & Game - reconsider!**

Regardless of the above, I hope you continue to enjoy the familiarity, friendliness and beauty of our lake, especially during those frustrating times. Try a 'green and yellow' or 'silver clown' and reflect upon how lucky you are not to have to go to work in Auckland each day.

Tight Lines!

TE NGAE PHYSIOTHERAPY CENTRE

Laurice Smith & Bill Unwin



- * Manipulative Therapy
- * Sports Injuries
- * Acupuncture
- * Feldenkrais Method

8am - 6pm 553 Te Ngae Road
Behind Owata Medical Centre
Wheel Chair Access Off Road Parking
Ph/Fax 07 345 6915

LAKE MAINTENANCE

NOEL & SUZANNE RUEBE

OKERE FALLS

LAWNS - GARDENS - RUBBISH REMOVED - TREES CUT -
PROPERTY SECURITY - PUMP MAINTENANCE - PAINTING -
TRACTOR WORK - SOIL & METAL CARTAGE -
BOAT MAINTENANCE

PHONE 0-7-362 4814 MOBILE (025) 948 730
P.O. BOX 495 ROTORUA

West Rotoiti Fire Force News

After pursuing many avenues of funding we finally have sufficient to replace our existing (old) fire engine. The new tender is expected to be available towards the end of the year. The old unit has for some time been costing a lot in maintenance and is near the end of its working life. Just recently, it cost around \$3,000 in repairs to enable renewal of the Certificate of Fitness. The new engine will be jointly funded by Rotorua District Council, the Rural Fire Authority and Rotorua Energy Charitable Trust.

As many will know, we have in recent times been plagued by flooding of our Fire Station. This has been due to abnormally heavy rainfall events with

consequential increase in lake levels, and lack of maintenance on drains in the vicinity. We are considering various options to solve the problem. A submission to RDC's Draft Annual Plan requests urgent improvement to the stormwater system off Te Akau Road to help in alleviating the situation.

Although most of our running costs are met by the Rural Fire Authority, through RDC, we still need community funding assistance. We would therefore value your subscription which remains at \$10 payable to our Treasurer, Judy Smith, 8 Foster Rd, RD4, Rotorua. Any inquiries Phone Barry Wade on 362-4111.

REMEMBER TO DIAL 111 IN AN EMERGENCY!

LAKE ROUNDABOUT cont...

Okere Road Cafe. We understand that the applicant has decided not to proceed with the Licensed Cafe planned for 132 Okere Road. This will be good news for residents who lodged an appeal against the consent to the Environment Court. The concept was supported in general and would be undoubtedly well received if a more suitable location could be found.

Okere Landing. Extension to the wharf has now been completed hopefully to the satisfaction of most. Some concerns over the stormwater discharge under the jetty are being monitored by RDC.

Okere Falls Plan Change. The Okere Incorporation has sought a change to the Rotorua District Plan to rezone a site adjacent to the Okere Falls Store from Rural A to Commercial F to enable the store to be redeveloped and resited. It is proposed that this redevelopment will incorporate dairy premises, new setback fuel facilities, off licence liquor sales outlet and licensed restaurant/cafeteria premises including off-road parking and manoeuvring.

RDC is now awaiting further information from the applicant prior to completion of the proposed Plan Change. It will then be presented for approval, following which it will be notified for public submissions.

Okere Road Reserve Jetty. The final obstacle to this proposal has recently been removed with DOC withdrawing its objection to the Environment Court over its concerns for the protection of the rare dabchick population in the area.

Jetty Licenses. Following concerns expressed over the current method of licencing for jetties around the lake, RDC have clarified their position with regard to charging fees based on jetty area.

The current formula acknowledges most jetties are about 15m² and this is the criteria for attracting the standard assessment cost. For those with larger jetties, the additional fee per square metre identifies not only the extra amount of lake or river bed occupied, but also the service needed to be provided for assessing larger jetties. This formula recognises the equity in access but ensures the costs of higher degrees of access are provided for.

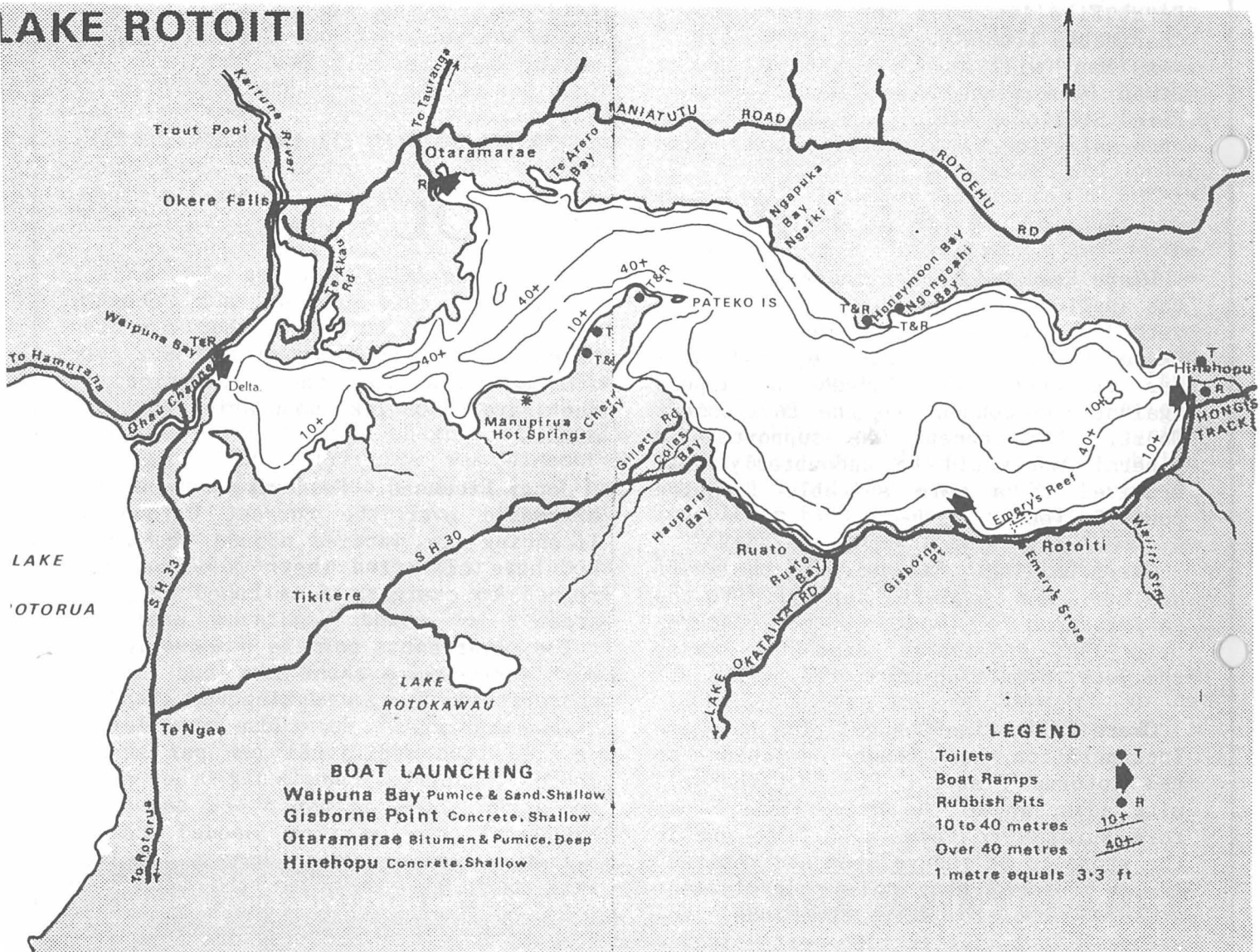
However, Council has conceded that there can be circumstances where the jetty might be larger than 15m² for reasons of safety or some other 'public good' in which case they will consider any written objection to the fee charged on its merits. Situations where jetties were constructed to suit existing lake levels could fall into this category.

2001 COMMITTEE

CHAIRMAN/TREASURER DEPUTY CHAIRMAN SECRETARY COMMITTEE

Jim Stanton	Okawa Bay, Mourea	Ph 362 4690
Fred Whata	Okere Falls	Ph 362 4842
Mary Stanton	Okawa Bay, Mourea	Ph 362 4690
Gail Boucher	Okere Falls	Ph 362 4815
Peter Carr-Smith	Gisborne Point	Ph 362 7764
Bill Kingi	Parcliffe	Ph 345 7186
Parehuia Merito	Otaramarae	Ph 362 4092
Nick Miller	Te Akau Road	Ph 362 4747
Richard Wilson	Otaramarae	Ph 362 4308
Hapi Winiata	Rotoiti East	Ph 348 7783

LAKE ROTOITI



IMPORTANT & USEFUL PHONE NUMBERS

Fire, Police, Ambulance,
Search and Rescue 111
Accident and Emergency
medical care centre 348 1000
Urgent Pharmacy 348 4385
ROTORUA HOSPITAL 348 1199
Poison Information (03) 474 7000

USEFUL INFORMATION

Dog control - Rotorua	Police Station Te Ngae
District Council 348 4199	345 3453
Environmental pollution hotline 0800 738 393	TrustPower emergency number 0800 499 699
Lakes Inspector Dave Pilkington 348 4199	Rubbish bags are collected on Monday mornings
SPCA 349 2955	