

## Lake Rotoiti Ratepayers & Residents Association



Okawa Bay

### **Kia Ora Greetings from the Lake**

With the virtual passing of another year, it is again time to reflect back on our achievements, or otherwise, and look ahead towards resolving impending issues which will or may have an effect upon our communities. Inevitably, various entities seek investment and lifestyle opportunities within the District whilst community leaders look to enhance our economic base and improve facilities and amenities for the benefit of Rotorua residents and the increasing number of annual visitors.

There will always be competing views whenever new ventures or projects are planned and meeting the wishes of differing interest groups is never easy. Increasing pressures and demands on our social well-being and the environment in which we live need to be constantly scrutinised and challenged where appropriate. It has always been the objective of this organisation to make a positive contribution in helping to find solutions which will be of optimum benefit and least disadvantage to our ratepayers and residents.

To our many subscribers, sponsors, advertisers and others who have supported the Association in its aims and aspirations, once again our sincere thanks. We wish each and everyone of you a joyous Christmas and prosperous New Year.

Chairman:  
Jim Stanton  
Tel: 362 4690

Secretary:  
Mary Stanton  
Tel: 362 4690

All Mail: PO Mourea  
c/- Happy Angler Store  
Rotorua

Fax: 362 4690

# CHAIRMAN'S REPORT - DECEMBER 2001

2001 has been a year of stagnation for a number of issues in which Rotoiti residents have a significant interest. Commenced in 1996, the Lakes Management Strategy, a joint initiative between Te Arawa Trust Board, Environment BOP and Rotorua District Council, has been grinding away to a stage where two of the six proposed working groups have recently been set up to address some of the 18 tasks outlined in the Draft Plan promulgated earlier this year. It has been the hope of many that this document will provide a firm basis for planning and controlling environmental and recreational activities within our lake catchments. Perhaps we can look forward to seeing greater progress made towards reaching these goals.

The On-Site Effluent Treatment Plan Change No 1 has been in Draft form for almost 12 months. We still await EBOP's intended pre-hearing meetings at which we are eager to debate some principal issues of concern to Rotoiti residents.

The proposed Okere Rural Refuse Transfer Station has been halted awaiting the outcome of RDC's appeal to the Environment Court lodged several months ago over some of the consent conditions.

The Gisborne Point SH30 footpath saga has only recently seen some light with RDC now undertaking to discuss possible options for this long sought after facility, whilst the replacement plan for the Lakes Inspectorate boat is still undecided after 3½ years under debate.

Whilst we accept that legislation and due process can often cause lengthy delays, it is easy to understand the frustrations generated by such inaction.

One of the most difficult issues confronting RDC at present is deciding on an optimum solution to address the fast declining water quality in Okawa Bay. Whilst residents backed by a number of experts clearly see sewerage reticulation as the best solution, the large capital and maintenance costs involved, and how such costs should be apportioned are a matter of grave concern for Council. A primary focus of the Association this year will seek to review the funding policy for utility services to ensure that it is affordable and equitable to all District users.

Triennial local body elections were the order of the day during October. We welcome back successful North Ward candidates Bob Martin and Charles Sturt along with new blood Chris Campbell (a radio announcer with Lakes 96FM). Local representative Rosemary Michie was the highest polling Regional Councillor for the Rotorua District and she is joined by former District Councillor Robin Ford and Bill Cleghorn. Commiserations to our other local aspirants, Mike McVicar and Tai Eru. When it was known that Council were including profiles of each candidate with voting papers, your committee decided that the expense of sending a supplementary newsletter which would essentially duplicate the exercise was no longer justified.

Of significance to our absentee owners is the present review of the Local Government Act which recommends that property owners only be allowed one vote in local body elections, ie the District in which they are on the electoral roll. This would once again see many local lake ratepayers adversely affected. Both the Association and RDC have strongly rejected this proposal.

Long standing Association Secretary, Mary Stanton, has finally decided to call it a day after 13 years. Those of you who know Mary will join me in acknowledging her outstanding contribution on behalf of all Rotoiti residents. She is equally well known and respected by many of our local politicians and community leaders. Mary now seeks to devote more time to her several other interests and she retires with our very best wishes.

With several current committee members unsure of their availability next year, I again urge others to consider offering their services. Strong representation is essential if we are to maintain our standing whilst continuing to seek the best outcomes for our environment and local communities.

May I take this opportunity to thank Councillors and Council staff and all of our members for their help and encouragement over the past year. We look forward to your continued support.

**JIM STANTON**

## NOTICE OF ANNUAL GENERAL MEETING

OF THE

# Lake Rotoiti Ratepayers & Residents Association



to be held at

Pikiao Rugby League Clubrooms, Takinga Street, Mourea

10.00am Sunday 13 January 2002

### AGENDA:

- |   |                            |   |                       |
|---|----------------------------|---|-----------------------|
| * | Welcome                    | * | Financial Report      |
| * | Apologies                  | * | Election of Committee |
| * | Minutes of Previous A.G.M. | * | Guest Speakers        |
| * | Matters Arising            | * | General Business      |
| * | Chairmans Report           |   |                       |

*Light refreshments available at conclusion of meeting*

### MINUTES OF THE ANNUAL GENERAL MEETING OF LAKE ROTOITI RATEPAYERS & RESIDENTS ASSOCIATION HELD AT PIKIAO LEAGUE CLUBROOMS ON SUNDAY 14 JANUARY 2001 AT 10.00AM

**PRESENT:** Jim Stanton (Chairman), Fred Whata (Dep Chairman), Mary Stanton (Secretary), Nick Miller (Committee), Grahame and Sandy Hall (Mayor and Mayoress RDC), Cr Charles Sturt (RDC), Cr Rosemary Michie (EBOP), and approximately 30 ratepayers and residents.

**APOLOGIES:** Steve Chadwick (MP Rotorua), Max Bradford (MP), Crs John Keaney, Tai Eru Morehu (EBOP), Cr Knocker Dean (RDC), Ian McLean (Chairman LWQS), Ray Bayer, Theo and Marjorie de Lange, Heather Fisher, John Livingstone, Alison McLean, Jill Newman, Trevor Saxon-Crawford, Richard Solomon.

The Chairman welcomed those present and thanked the invited guests for their attendance. The meeting commenced with a Karakia (prayer).

**1. MINUTES OF THE PREVIOUS ANNUAL GENERAL MEETING.** Held at the Pikiao League Clubrooms on 9 January 2000 were confirmed as a true and accurate record.

Ian Summersby / Richard Wilson                      Carried

### 2. MATTERS ARISING.

**a. LAKE SAFETY AND CONTROL.** It was noted that there were continuing problems with jetskis nationally and this had prompted some local authorities, notably Auckland Regional Council, to approve regulations requiring all jetskis in their region to be registered in the near future. This could well set a precedent for other regions to follow. The Association had recently reiterated local concerns over future use of jetskis within the Ohau Channel and had asked Rotorua District Council to consider prohibiting them from this area.

b. **MOUREA WATER SUPPLY.** The meeting was advised that RDC had recently made a staff appointment which would allow further progress towards identifying alternative options for affected Mourea residents following the abandonment of the original scheme earlier this year. NIWA is currently carrying out additional research into ground water flows in the Mourea area in an attempt to identify uncontaminated sources which could be utilised for water supplies.

c. **LAKEWEED SPRAYING.** It was noted that the contract for the current season had been let to Dr Ian Johnstone, a private consultant from Hamilton, who had previous experience with NIWA in the Rotorua Lakes area. Spraying had been carried out in consultation with the Lakeweed Society and local residents and results were still awaited.

d. **WOODEN BOAT REGATTA.** Lindsay Brighthouse gave a brief outline of the programme proposed for this year to be held on Sunday 4 February 2001.

e. **PRIVATE JETTIES.** Objections had been raised by several jetty owners during the course of the year over newly established licence fees. The matter had been raised with RDC and remained under discussion.

f. **RETIRING RDC DEBT.** Earlier in the year, a survey of residents had been undertaken by the Association in an attempt to establish the level of support in the area for the proposal to retire the existing \$40 million debt carried by RDC, by way of loan or grant of monies held in account by Rotorua Energy Charitable Trust. Whilst most respondents had supported the proposal, they numbered only 12 percent of Rotoiti property owners which was deemed as being not sufficiently representative to pursue the matter further. Lindsay Brighthouse, who had initiated the proposal, noted that there were still differing opinions over whether RECT could legally transfer funds for the purpose but acknowledged the present impasse.

g. **REPLACEMENT OF OKERE JETTY.** Local residents had met with the District Manager and Council officers in March to discuss concerns over the design of this jetty. This had resulted in a Council undertaking to implement various improvements to the satisfaction of residents. These had been completed with the exception of lengthening of the jetty which was subject to a Resource Consent application lodged with Environment BOP in May/June. This had apparently stagnated causing some residents to express their frustration through the media.

There currently seemed to be differing views between the two Councils as to whether RDC had supplied all necessary information. The Association was in the process of seeking clarification regarding the hold-up. Both Mayor Hall and Cr Sturt noted that they were unable to investigate or assist in resolving problems if residents failed to notify them as was the case in this instance. The matter would now be followed up by RDC and EBOP Councillors present.

h. **FOOTPATH - GISBORNE POINT.** Further requests to implement footpathing between Wharetoroa Drive and Emery's Store had been made following the last AGM. RDC response was that there was no formal rural footpath policy and problem areas were addressed according to urgency. Since there was no significant crash data for the Gisborne Point area, it had not been identified as a priority.

Bob Armstrong said he had been writing to Council over the past 10 years in a vain attempt to elicit action and had reached exasperation point. The problem had worsened in recent years with the steady increase in heavy traffic using the route. It seemed another case of putting the ambulance at the bottom of the cliff. He was supported by other Gisborne Point residents who noted that the grass verge had now been reduced by grader action. Residents, particularly school children and mothers with youngsters, continued to find pedestrian access hazardous.

The Chairman noted that RDC had established a priority list for rural footpaths, kerbing and channelling some years ago based on updated criteria but budget constraints had not allowed for any great progress to be made. Following discussion, it was resolved that the Association would once again write to RDC requesting urgent re-assessment of the requirement for a footpath at Gisborne Point in consultation with the local community.

i. **MOUREA BOATRAMP.** This proposal had lapsed due to the landowner being unable to provide an easement for public access. It was understood that the local fishing club were looking at alternative options.

3. **CHAIRMAN'S REPORT.** Presented by Jim Stanton and adopted by the meeting.

Richard Wilson / Judy Rewi

Carried

4. **MATTERS ARISING FROM CHAIRMAN'S REPORT.**

a. **POWER OUTAGES.** Charles Sturt noted that he had fielded many complaints from a number of localities and asked whether satisfactory remedial action had taken place. Lindsay Brighthouse said that matters had improved significantly in Okere since a malfunctioning transformer had been fixed. Bob Armstrong reported that low voltage problems in Gisborne Point had been rectified whilst Robin Sinclair, whose Mourea business is reliant upon an integral power supply, noted few problems in that area. It had been apparent that most problems were attended to in response to complaints rather than through an ongoing maintenance programme.

5. **FINANCIAL REPORT.** The Financial Report and Audited Accounts were presented by the Chairman and accepted accordingly.

a. **SUBSCRIPTION.** It was proposed that the subscription for 2001 remain at \$10 per resident/ratepayer family.

b. **ELECTION OF AUDITOR.** Honorary Auditor for the past 4 years, Mrs Joyce Morey, regrets that she is no longer able to carry out the service. Grateful thanks were extended to Mrs Morey for her efforts. The new committee was entrusted with finding a suitable replacement.

Michael Gill / Nick Miller

Carried

c. **HONORARIUM.** It was proposed by Ian Summersby and seconded by Lindsay Brighthouse that the Secretary be paid an Honorarium up to \$500 in recognition of continuous heavy workloads performed annually. The matter was subject of much discussion and support, following which Mary Stanton acknowledged the sincere gesture but declined the offer.

6. **ELECTION OF COMMITTEE.** The following were elected to the executive committee for 2001 in accordance with accepted procedures:

Gael Boucher, Peter Carr-Smith, Bill Kingi, Parehuia Merito, Nick Miller, Jim Stanton, Mary Stanton, Fred Whata, Richard Wilson, Hapi Winiata.

Lindsay Brighthouse / Bob Armstrong

Carried

**7. GUEST SPEAKERS.** Mayor Grahame Hall and Crs Charles Sturt and Rosemary Michie accepted invitations to address the meeting on matters related to their particular sphere of office. Subjects discussed and debated included, Acknowledgement of work by Association and Committee; Lakes Water Quality and upcoming scientific seminar; Tarawera variation to District Plan; Lakes Management Strategy; Rural Refuse Transfer Station proposals; Local Festival of Arts; Neighbourhood Support; Govt review of roading policy; Local Electoral Bill; Civil Defence and Emergency; BOP Region Environmental Grants; Bio-diversity - lake margins, Ohau Channel; Animal and plant pest control; Rotorua (particularly Te Ngae policing policies; Lakes ownership and control; Upcoming triennial elections.

## **8. GENERAL BUSINESS**

**a. LAKES WATER QUALITY.** Elizabeth Miller outlined some of the changes proposed by the Lakeweed Society including a name change to Lakes Water Quality Society to reflect a broadened objective which will focus on the overall water quality of Rotorua lakes. The Society has initiated a scientific symposium to be held in Rotorua in March to discuss and debate current and future integrity of the lakes waters. Guests will include top national and international experts in the field.

On the local front, Lindsay Brighthouse voiced concern over the validity of Public Health notices which advised people against recreational activities and taking water from areas within the Okere Arm due to excessive algal blooms. He said that it was apparent that situations were not being regularly reviewed by the authorities as signs remained in place well after the counts had abated to safe levels. He requested that this seemingly casual approach be investigated by Councillors present as it was having a significant effect on communities and the local economy, particularly tourism.

Notwithstanding, considerable alarm was expressed over the rapid deterioration of water quality in Okawa Bay. It was considered by most that over the past 6 weeks, these waters had become the worst seen in recent memory. This was highlighted by latest test results which showed a count of 117,000 algal cells per milli-litre of water (against safe levels of 15,000 ac/ml). There was also much concern over the probability of increased nutrient loading from septic discharge. Okawa Bay residents were calling for urgent remedial action.

Robin Sinclair outlined the position of the Okawa Bay Resort which since 1996 had only marginally met its (interim) resource consent conditions for effluent discharge. Whilst the consent had two years to run, it had been agreed to on the basis of an anticipated sewerage reticulation scheme being implemented in Mourea within a few years. This had now been postponed due to prohibitive cost estimates and alternative options were likely to be several years down the track.

Following discussion, it was resolved that the Association write to Environment BOP and ask them the following:-

- i. What is their view as to the present state of Okawa Bay.
- ii. What is their view as to the reasons for the rapid deterioration in water quality.
- iii. What plans do they have, including definitive timeframes, to remedy the situation.

Robin Sinclair / Brentleigh Bond      Carried

**b. PROPOSED OKERE ROAD REFUSE TRANSFER STATION.** Richard Wilson brought up concerns over this proposal, and in particular an apparent lack of consultation with local residents. He and others firmly believed that the removal of existing skip sites would contribute to a significant increase in illegal and injudicious dumping which would be detrimental to the quality of the lake and lake margins.

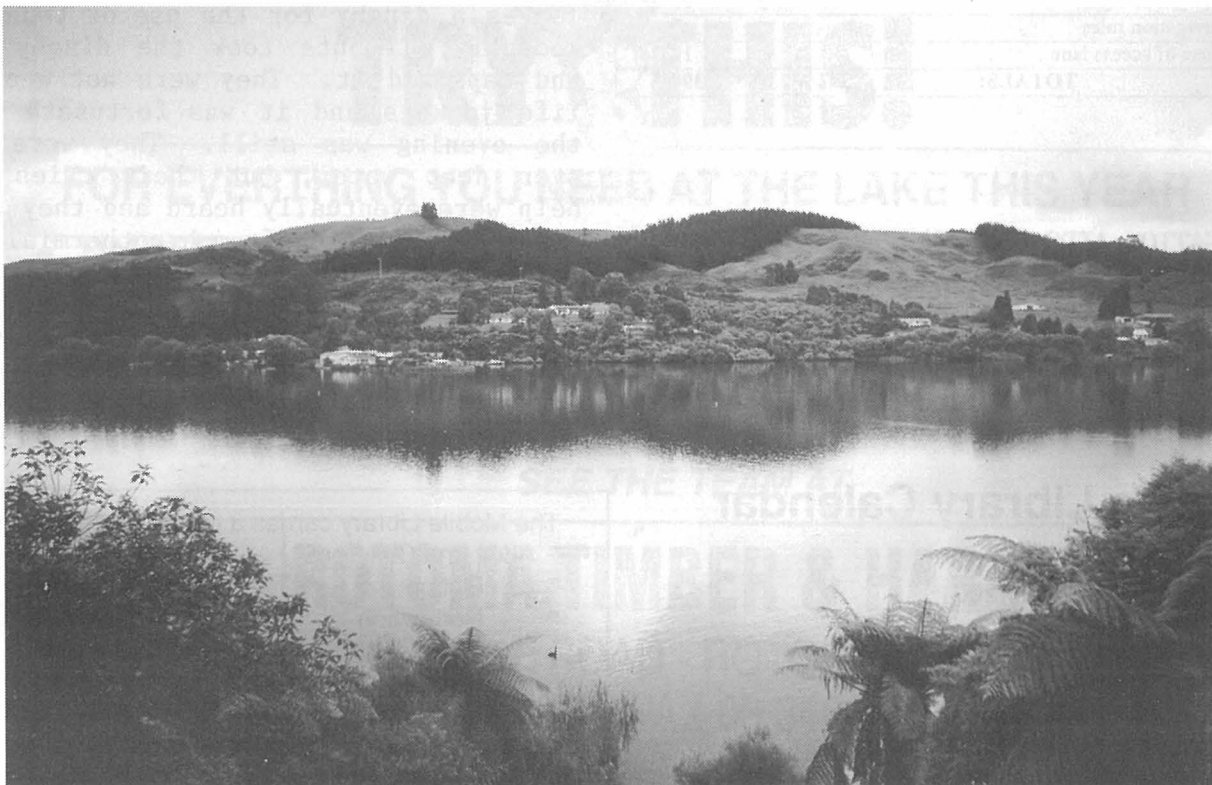
It was explained that RDC had applied for two Resource Consents, firstly for land use and secondly for discharge of effluent. Both of these had been notified through the local media which allowed anyone to submit concerns or objections. A formal Hearing is likely to take place later this month. If consents are granted, there will then be further consultation with the local community regarding operational issues such as opening hours, charging, etc.

It was noted that the Association in earlier submissions had requested consideration be given to maintaining facilities which could accommodate absentee owners who may have only limited access to a Transfer Station. Council's intentions regarding this were not yet known.

**c. ACKNOWLEDGEMENT.** Bob Armstrong proposed a vote of thanks to the committee, and in particular the Chairman and Secretary, for their sterling efforts on behalf of ratepayers and residents over the past year. This was endorsed by the meeting.

**9. CLOSURE.** There being no further business, the meeting closed with a Karakia at 12.45pm.

**NB:** These Minutes will be confirmed at the Annual General Meeting to be held Sunday 13 January 2002. The Financial Report and Audited Accounts will be available at this meeting.



Whangamarino

# LAKE INSPECTORS REPORT *Dave Pilkington*

**REGULATORY FUNCTION.** I have been made aware that some statistical information included in the June report has been misconstrued as being for all Rotorua lakes. I emphasise that it relates only to boat operators stopped or spoken to by Council's contracted Inspector, Rick Holden. Council staff, along with some Honorary Inspectors provide back-up to a degree, but with increasing boat use on Lake Rotoiti we simply cannot have people on hand to deal immediately with every incident. With the holiday season fast approaching, it is timely to repeat this information in the hope that boat operators will take note for the benefit of other lake users and residents.

	1999/2000	2000/2001
Boats too fast close to shore	145	154
Jet Skis too fast close to shore	41	34
Skiing too fast close to shore	32	15
Skiing off beach	6	9
Skiing in restricted area	9	10
Dropped water ski	21	22
Improper use of ski lane	22	23
Trolling over busy ski lane	2	5
Skiing without an observer	27	15
Bow riding	24	38
Lack of navigation lights	63	50
Lack of navigation rules	-	9
Improper use of access lane	-	10
<b>TOTALS:</b>	<b>392</b>	<b>394</b>

**NAVIGATION AIDS (BUOYS).** Development of the buoyage system on Lake Rotoiti is virtually complete. We are still losing too many 5 knot buoys. Some are struck by boats and/or propellers sustaining terminal damage. To try and reduce this

loss, we are blowing foam into them to provide more density. This will render them a more formidable opponent when struck so please be aware of positioning of buoys and give them a wide berth.

Another significant reason for loss of buoys is cutting loose by anglers who consider them to be an obstruction when harling, especially if they lose a line or trace around the mooring line. I take this opportunity to remind people that it is an offence to cut buoys loose and we will prosecute if apprehended. Furthermore, we use floating rope which remains vertical from the anchor block to the surface. If it is not found, it will continue to foul lines.

**LIFE JACKETS.** BOP Regional Council have produced a new By-law due for introduction in 2002. It will cover all of the Bay of Plenty including the Rotorua District and will require the provision of a life jacket or buoyancy aid for each person on board.

Life jackets and provision of them by boat owners is topical. A property owner on another lake, who is in the practise of renting the property out, leaves a dinghy for the use of tenants. Recently, tenants took the dinghy out and capsized it. They were not wearing life jackets and it was fortunate that the evening was still. They were out over deep water, but their cries for help were eventually heard and they were rescued, suffering from hypothermia.

Anyone renting a property including a boat should clearly understand the additional responsibilities that this brings in both complying with the law and for personal safety reasons.

## Mobile Library Calendar

**Tuesday Route 2000/2001**

**Fortnightly from 27 November 2001**

08.50 - 09.15 Wharetoroa Drive  
09.30 - 10.00 Rotoma School  
10.05 - 10.25 Rotoma Store  
10.30 - 10.50 Rotoiti School  
11.20 - 11.45 Okere Falls Store

The Mobile Library carries a good selection of

- \* Adult and Childrens
- \* Fiction
- \* Non-fiction
- \* Large print
- \* Magazines
- \* Talking books
- \* New Zealand Fiction & Non-fiction
- \* Music Cassettes and C.D.'s
- \* Videos

Special requests can be made for specific items.



**/POLICE**  
Nga Pirihimana O Aotearoa

## BLUEPRINT

Contrary to what you may have read, the Te Ngae Policing Centre still exists and the Highway Patrol staff have their feet firmly planted in the building.

We have records of all firearms licence holders in NZ - both the old and new types. The old 'lifetime' firearm licences (red booklet) are obsolete and were replaced by the photographic type currently in use. There are many people with firearms who do not have the new licence in which case you are deemed to be unlicensed and can be prosecuted.

Make a decision now! Either sell your firearms, give them to a licence holder and surrender your licence, or update. Call the Rotorua Firearms Officer, Ph 349-9475 for further advice.

Several tourists' vehicles have been broken into recently, particularly in Trout Pool Road. Although we send out warning messages about leaving valuables in vehicles, these thefts will always continue. However, I have mentioned this because one of the vehicles seen acting suspiciously in that area, a white Mitsubishi Lancer, is I believe from Mourea!

We still need to form more neighbourhood support groups in the Mourea area, especially between the store and the bridge, Hamurana Road, and also on SH33 towards Okere Falls. Discuss the idea with a neighbour and give me a call at Te Ngae CPC (Ph 345-3453). From all the staff at this office, we wish you a safe and happy Christmas.

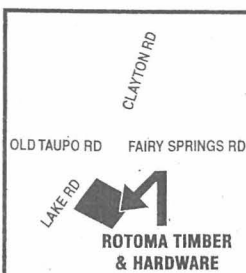
*Senior Community Constable George ANARU*

## TRY THIS!

FOR EVERYTHING YOU NEED AT THE LAKE THIS YEAR

- TIMBER
- HARDWARE
- BATTS
- GIB BOARD
- TRUSSES
- PRENAILS
- MOULDINGS
- FENCING
- LANDSCAPING
- DECKING
- NAILS
- HARDIES PRODUCTS
- PARTICLE BOARD
- PLYWOOD

SEE THE TEAM AT



## ROTOMA TIMBER & HARDWARE

163 LAKE ROAD - ROTORUA  
PH 07 347 7023 FAX 03 346 0768  
or email us at [rotoma@xtra.co.nz](mailto:rotoma@xtra.co.nz)



# LAKE ROUNDABOUT

**Mourea/Okawa Bay Wastewater.** The RDC response to our Annual Plan submission advised that funding allocated within this Financial Year would allow for completion of current studies which would provide the information/data required to establish the best solutions for the area's sewerage problems. In recognition of overall concerns, a further \$1 million has been allocated for each of the 2002/03 and 2003/04 years for lake settlement sewerage.

Since then, updated reports have identified progress on investigations and costings of various options. NIWA and EBOP have carried out profiling of Okawa Bay and found no underwater geothermal springs present. The NIWA study states that it is unlikely that removal of septic tank effluent will cause an immediate, marked improvement in water quality and any changes are likely to occur over a number of years, possibly decades. However, removal of the effluent should arrest the decline, and **introducing** a flushing system could possibly enhance the improvement.

Estimated revised cost of a community scheme which a) has a local on-site treatment and disposal system, or b) reticulates to Rotorua, is \$2.5 million and \$3.9 million respectively with annual operating costs of \$80-90,000. The cost of an additional flushing system is estimated at \$500,000.

An interim option which would delay capital expenditure and reduce the high operating costs above has also been floated. This involves 'relocating' the septic tank discharges out of Okawa Bay by pumping the effluent over the Ohau Channel and feeding it into a rapid infiltration system located adjacent to SH33 beyond the Delta where it should denitrify in the large wetland area and disperse through seepage into the Okere arm. The cost of this exercise would amount to \$1.3 million with an annual cost of \$33,000. It is envisaged that a treatment plant and disposal system could be added to this scheme at a later date.

A meeting was held with RDC early November to discuss progress and a further meeting is planned shortly at which other options presently being evaluated will be debated, following

which the recommended option will be initiated. Once resource consents have been finalised, RDC estimate design and installation will take about 11 months barring unforeseen delays. It should, however, be noted that current RDC budgets are insufficient to meet the cost of a fully fledged scheme.

**RDC Funding Policy.** A direct impact of the implementation of any small community sewerage scheme will be the burden of annual and ongoing maintenance costs. In the present climate of 'user pays' those connected to the scheme can expect to pay all maintenance costs. This is reflected in the current RDC Funding Policy. However, it is our firm belief that justification exists to amend this policy.

Our concerns would relate to the relatively high annual operating costs being borne by a limited number of consumers. In the case of Mourea/Okawa Bay for instance, these could be in the range of \$350-400 per connection whereas Rotorua urban costs are around \$250 per connection. Many within the community would find this scale of charges quite onerous.

Because of the capital cost involved, Council is only likely to implement reticulation where septic tank disposal is clearly untenable in terms of public health and environmental integrity.

It was determined through the Strategic Planning process that the majority of residents within the Rotorua District see the lakes as our most valued asset and fully support all viable measures to maintain and enhance lake water quality. Furthermore, it can be argued that septic tank impact on lake water quality can be attributable to a fair degree to both District and Regional schemes which have involved or allowed increased ribbon development and/or catchment control, including altering water courses and lake level manipulation.

It follows that where it is deemed necessary to implement schemes designed to exclude excess nutrient discharge into the lakes, these will be of optimum benefit to the whole District. It seems reasonable therefore to expect operating costs to be shared accordingly.

# NEWS & VIEWS

**RDC Tourism Budget.** Some time ago, RDC and the Tourism Advisory Board pledged to hold meetings with rural ratepayer groups to discuss and debate issues relating to the allocation of funds from general rates towards tourism marketing. Our Association, amongst others, has made various submissions in the past expressing concern over the amount of funding being budgeted for this purpose.

A meeting for Rotoiti was eventually held on 15 August 2001 attended by Mayor Grahame Hall, Tourism Rotorua Manager Oscar Nathan, and TAB Chairman Warren Harford. Understandably, they were keen to expound the virtues of present ratepayer contributions. In fact it was suggested that RDC's budget for this activity is one of the lowest in the country relatively speaking and was well justified in terms of the

overall economic benefit to the community. Statistical evidence was advanced to support these assertions.

Prior to the meeting, we had obtained information from both the Queenstown Lakes and Taupo District Councils as to how they fund tourism marketing. Both substantially fund the activity from commercial rates, this sector being determined as the main beneficiaries. We, like other local rural groups remain somewhat unconvinced that our contributions from general rates are totally justified. However, there will at least be an awareness in Council that we expect the lid to be kept on this type of spending. We also made the point that the activity expenditure should be more clearly defined in future Annual Plans to enable better appraisal by ratepayers.

\*\*\*\*\*

## MAX BRADFORD

National MP Rotorua



*"Rosemary and I would like to wish everyone a happy Christmas and a peaceful and safe New Year. We look forward to serving you next year."*

Max Bradford MP

Electorate Office:  
1205 Amohia Street, Rotorua  
Phone (07) 347 4444  
Fax (07) 347 4444  
Email:  
max.bradford@parliament.govt.nz  
Web: www.maxbradford.co.nz



**Marama Point.** The former Ohau Channel Camp so re-named is nearing completion. Work is frantically going on to meet the scheduled opening date of 7 December. With the overall design now plainly evident, further opportunity exists to re-assess its appropriateness in this location.



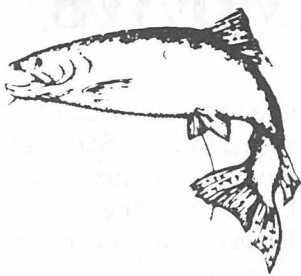
**Bay of Plenty Regional Council**

Quay Street, P O Box 364  
Whakatane, New Zealand

Telephone (07) 307 2545  
Outside Whakatane District but within  
BOP - Call free on 0800 ENV BOP  
0800 368 267  
Facsimile (07) 307 2544  
International Dialling Code (0064 7)

POLLUTION HOTLINE 0800 73 83 93

## ANGLERS' CORNER



Once again, six months have flown by and with fishing closed for three of them, and Manupirua Springs still out of commission, the lake has been relatively quiet. Sad to say, Tarawera appeared to be the fishing success over the opening in October, with Rotoiti from the Delta to Pateko Island providing only patchy results.

In that area I cannot recall landing so many small fish. Where the average weight used to be 5-6lb, they are now more often 'throw-backs' whether fishing

Gael Boucher

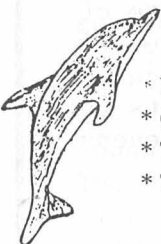
deep or shallow. In six hours one Sunday, we netted eight fish, put six back and kept two 2 pounders. Of the eight, two were hatchery fish.

It would appear that the releases along SH30 from Hauparu Bay make for the eastern end of the lake which is a far more productive hunting ground. However, fish are now showing up in places that have been sparse since opening. Let's hope that we all do well before the holiday influx of boats.

The green beetles are around, so always something green on Rotoiti or check out Black Toby or Clown. In the fly department, try a Dorothy Gray or Parsons Glory.

Good Luck and Tight Lines!

## DEANS CANVAS & UPHOLSTERY CO



Specialists in:

- \* Window Awnings
- \* Caravan Awnings
- \* Trampoline Mats
- \* Tarpaulins
- \* Boat Canopies & Covers
- \* Marine Upholstery
- \* Furniture Upholstery
- \* Calf Covers
- \* All Repairs & Restitching

Rotorua: Colin Deans (07) 345 3415 A/H

36 White Street . Rotorua (07) 348 7209

## For Lake Property Sales contact The Professionals

If you are looking for a proven sales record with confidentiality assured - contact us at McDowell Real Estate. Our clients will receive the finest service in Real Estate.



BETTY SHEPHERD  
Lakes Specialist

A/H (07) 345 9162  
Mobile: (025) 997 711  
20 Million Dollar Club  
Top 10% NZ Wide



The Professionals

McDowell Real Estate Ltd MREINZ

1290 Eurera Street, Rotorua  
Ph. (07) 348 4159 Fax (07) 347 7071

## TE NGAE PHYSIOTHERAPY CENTRE

Laurice Smith & Bill Unwin



- \* Manipulative Therapy
- \* Sports Injuries
- \* Acupuncture
- \* Feldenkrais Method

8am - 6pm 553 Te Ngae Road

Behind Owata Medical Centre

Wheel Chair Access Off Road Parking

Ph/Fax 07 345 6915

## LAKE MAINTENANCE

NOEL & SUZANNE RUEBE

### OKERE FALLS

LAWNS - GARDENS - RUBBISH REMOVED - TREES CUT -  
PROPERTY SECURITY - PUMP MAINTENANCE - PAINTING -  
TRACTOR WORK - SOIL & METAL CARTAGE -  
BOAT MAINTENANCE

PHONE 0-7-362 4814 MOBILE (025) 948 730

P.O. BOX 495 ROTORUA

# LAKE ROUNDABOUT cont...

**Environmental Enhancement Fund.** This recently established fund has been enhanced by EBOP to include further funding of \$750,000 per annum available to Territorial Authorities such as the Rotorua District Council for projects appropriate to the local environment. Such projects could be on the basis of recommendations from ratepayer or other organisations within the District.

One such project currently being contemplated is a retirement scheme for parts of the Ohau Channel which could see banks stabilised and protected through native plantings such as those along the Ngongotaha stream. The idea is currently being floated to our local iwi for further consideration.

## **Proposed Regional Water and Land Plan.**

A local consultation meeting is planned for 4 December 2001 at the Okawa Bay Resort commencing 7.00pm to discuss the proposed implications of this Plan. In particular, Rule 11 relates to the control of the intensification of land use in some lake catchments (including Rotoiti) that may result in increased input of nutrients into groundwater or surface water such as subdivision or change of land use. Anyone interested in finding out more can attend.

**Environmental Report Launch.** EBOP have recently launched an Environmental Report through meetings held at various centres including Rotorua. Called 'Bay Trends' the report looks at the trends in land, air, water and coastal resources, shows what pressures are on these resources, and outlines how EBOP is responding to these pressures. Copies of the report can probably be made available to anyone who is interested.

**Lakes Research.** Environment BOP has endowed \$600,000 to establish a Chair in Lake Management and Restoration at the University of Waikato. The Chair is for a five year term and provides a salary for a senior researcher and financial support for two doctoral and four masters students.

Research will focus on the Rotorua group of lakes. It will lead a review of lake research and monitoring programmes, as well as undertake high level investigation into lake processes. Staff will also participate in undergraduate and postgraduate teaching and supervise student research on lake issues. The endowment is a first step towards the establishment of a centre of excellence in Lake Management and Restoration.



# PARADE OF THE WOODEN BOATS

**SUNDAY - 3 FEBRUARY 2002**

From all the spit and polish going on amongst our 'fleet' of traditional boats it seems there will be a record turnout (again) for the parade on Sunday 3 Feb.

The parade will again assemble in Okawa Bay at 10.00am for the Karakia (blessing of the boat) and will then be despatched by cannon fire!? for the lake trip which will stage at Patiko Island - the convoy will re-assemble here to allow everyone to catch up.

The final destination is secret - because last year when it was widely known where the parade would land, many places on the beach were taken up by 'freeloaders' who moved in early to join the festivities without paying any registration!

In charge of the judging team this parade is John Welsford - a Rotorua resident and internationally recognised designer of wooden boats.

Once again, a great day is planned. Get the paint brushes out. This is the time to see our now famous Rotoiti fleet of traditional boats all together.

**GOOD SAILING!**

**THE MOST EXPERIENCED  
'LAKE PROPERTY SPECIALISTS'  
IN THE DISTRICT**

FOR EXPERT AND CARING REAL  
ESTATE SERVICE ENQUIRE TODAY

**LAKE ROTOITI  
and Lakes Okareka, Tarawera,  
Rotorua, Rotehu & Rotoma**

**Joan Piesse AREINZ Brian Piesse**

Phone Office 0-7-348 5058  
A/hrs 0-7-362 7755 (Ph/Fax)  
Mobile 025 952 227

Cnr Hinemoa & Amohia Streets,  
PO Box 77, Rotorua  
DX No. JP30040;  
Facsimile: 0-7-348 2381

**L.J. HOOKER™**

**Nobody does it better™**



**AT THE OKERE FALLS STORE...**

## LIQUOR STORE



**FAIRLY  
FAST FOOD**

**FISH, CHIPS, BURGERS, ETC.**

**Hours 8am - 7pm 7 Days  
Orders Ph (07) 362 4854**

**UNDER OLD MANAGEMENT**

**by Boat or by Car, you know where we are**

## ROTOITI LAKE CRUISES

**M.V. HINEKURA**



Your hosts, Ted & Gael Boucher  
Operating from Okawa Bay Lake Resort

- \* **Fishing (our speciality)**
- \* **Scenic Charters**
- \* **Barbecues**
- \* **Picnics**
- \* **Hot Pool Bathing and Evening Trips**

*Departs Okawa Bay Resort  
and other sites by arrangement*

**Business Phone (07) 362 4599    Home Phone (07) 362 4815**

**c/- P.O. OKERE FALLS, ROTORUA, N.Z.**

# West Rotoiti Fire Force News

The Annual General Meeting of the Fire Unit was held on 12 October 2001. There was a poor turnout with only committee members and partners turning up. Barry Wade was re-elected as Chairperson but there were no nominations for Secretary. We seek to fill this position as soon as possible! Carol Goodman was elected as Treasurer.

This year we have had two major floods through our building and several options have been looked at to prevent a recurrence. RDC's option of relocating next to the proposed Refuse Transfer Station further up Okere Road has been considered to be the best solution. Delays in Resource consents have prevented us moving in by Christmas.

We have been granted a new fire engine which is currently under construction and should be delivered within the next two months. This has been jointly funded by the Rural Fire Authority and a generous donation from Rotorua Energy Charitable Trust.

Fire fighters have been trained and assessed to NZQA Standards - the first in Rotorua. A team recently went to Rotorua Airport and trained with other Units and NZ Army helicopters.

Fire permits are now required and are available from Rotorua District Council-Engineers, Fletcher Challenge office at Waiotapu, or Department of Conservation (if within one kilometre of a Reserve).

Please remember to regularly check your smoke alarm batteries. Voluntary nominations for the Secretary's position will be most welcomed - please contact the Chairman or any of our volunteer Fire Fighters - Barry Wade (Ph 3624111); Willie Shaw (Ph 3624315); Dan Arrowsmith (Ph 3624477); Ted Boucher (Ph 3624815); Noel Ruebe (Ph 3624814).

Take care on the roads, lakes, rivers or wherever you happen to be. We hope you all have a happy and safe festive season.

**REMEMBER TO DIAL 111 IN AN EMERGENCY!**

## LAKE ROUNDABOUT cont...

**Manupirua Hot Springs.** The closure of the baths at Manupirua earlier this year has been of much concern to the many residents and visitors to whom they are a huge attraction. The situation has resulted from two extreme weather events over the past two years which have caused major slipping above the baths. A number of large trees have toppled and others have had their root systems destabilised rendering the area unsafe.

Whilst the damage from the first event was fixed, the second was of greater impact with estimates for reparation of up to \$50,000. The owners, who form part of the Paehinahina Mourea Trust, are presently evaluating engineering reports to determine the best options. They are hopeful that a solution is close to hand and that the pools can be reopened in time for the main holiday influx.

In the meantime, they are dismayed over the injudicious actions of some who chose to ignore the closure signs, and others who are intentionally abusing the facility.

**Kaituna Catchment Control Scheme.** A new Draft Rating Proposal is shortly being promulgated to change the way in which this scheme is funded. As many will know, the scheme has been in existence for some 20 years and was designed to help overcome long-standing flood problems caused by the Kaituna river overflowing in times of heavy rain.

The scheme includes the catchments of Lakes Rotorua and Rotoiti (Upper Kaituna scheme) and those further downstream around Te Puke and Maketu (Lower Kaituna scheme). The Upper and Lower schemes have, until now, been rated separately. This new proposal intends to bring together all of the properties in the scheme under one rating system to fund ongoing operations. Under this system, each property will be re-classified for rating purposes which will determine the level of differential to be paid. We are unsure of the implications at present but a newsletter has been sent out by EBOP through circular distribution with contacts included for further information.

## 2001 COMMITTEE

### CHAIRMAN/TREASURER

### DEPUTY CHAIRMAN

### SECRETARY

### COMMITTEE

Jim Stanton

Fred Whata

Mary Stanton

Gail Boucher

Peter Carr-Smith

Bill Kingi

Parehuia Merito

Nick Miller

Richard Wilson

Hapi Winiata

Okawa Bay, Mourea

Okere Falls

Okawa Bay, Mourea

Okere Falls

Gisborne Point

Parcliffe

Otaramarae

Te Akau Road

Otaramarae

Rotoiti East

Ph 362 4690

Ph 362 4842

Ph 362 4690

Ph 362 4815

Ph 362 7764

Ph 345 7186

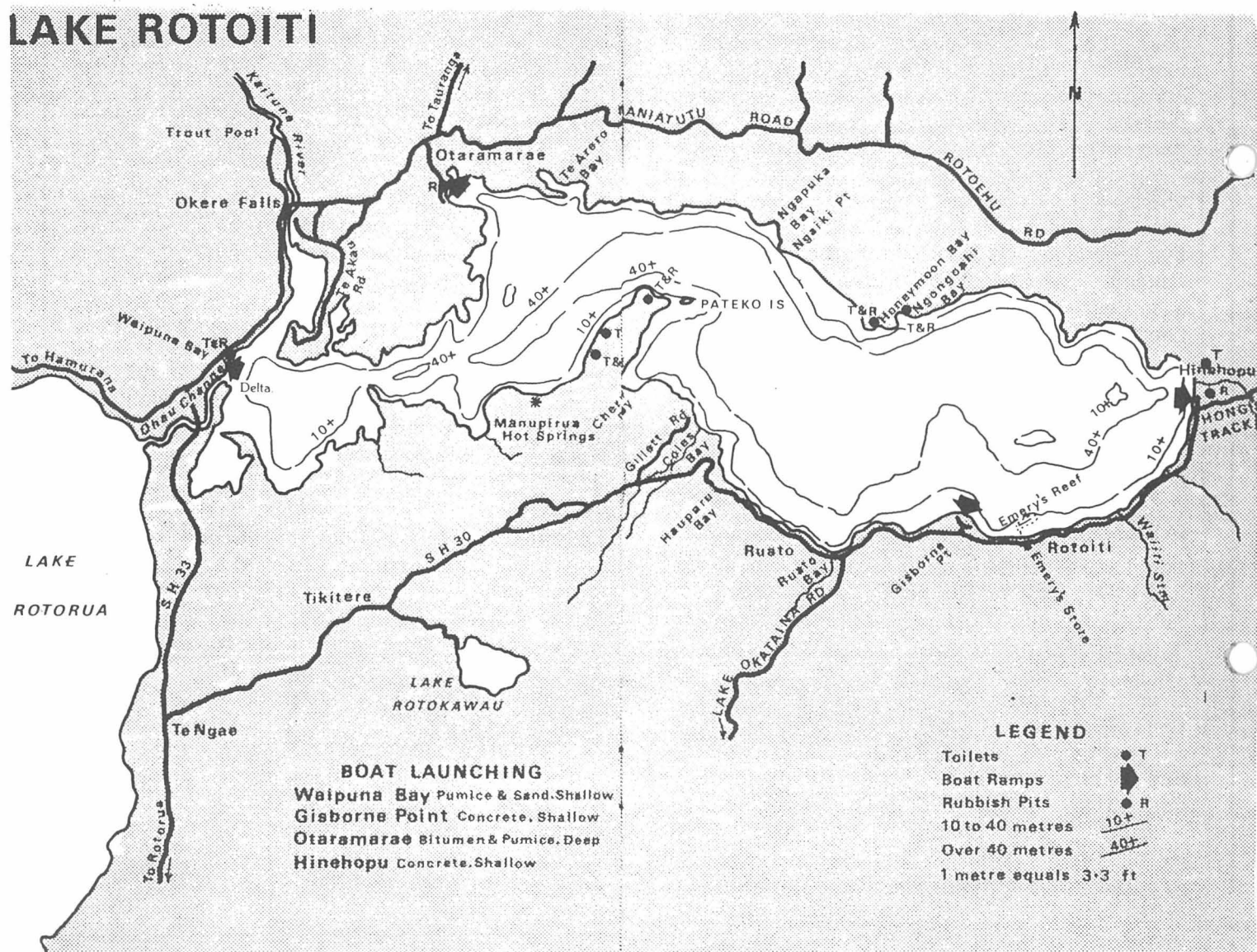
Ph 362 4092

Ph 362 4747

Ph 362 4308

Ph 348 7783

## LAKE ROTOITI



### IMPORTANT & USEFUL PHONE NUMBERS

**Fire, Police, Ambulance,  
Search and Rescue 111**  
**Accident and Emergency  
medical care centre 348 1000**  
**Urgent Pharmacy 348 4385**  
**ROTORUA HOSPITAL 348 1199**  
**Poison Information (03) 474 7000**

### USEFUL INFORMATION

**Dog control - Rotorua**  
**District Council 348 4199**  
**Environmental pollution  
hotline 0800 738 393**  
**Lakes Inspector**  
**Dave Pilkington 348 4199**  
**SPCA 349 2955**

**Police Station Te Ngae 345 3453**  
**TrustPower emergency  
number 0800 499 699**  
*Rubbish bags are collected on  
Monday mornings*