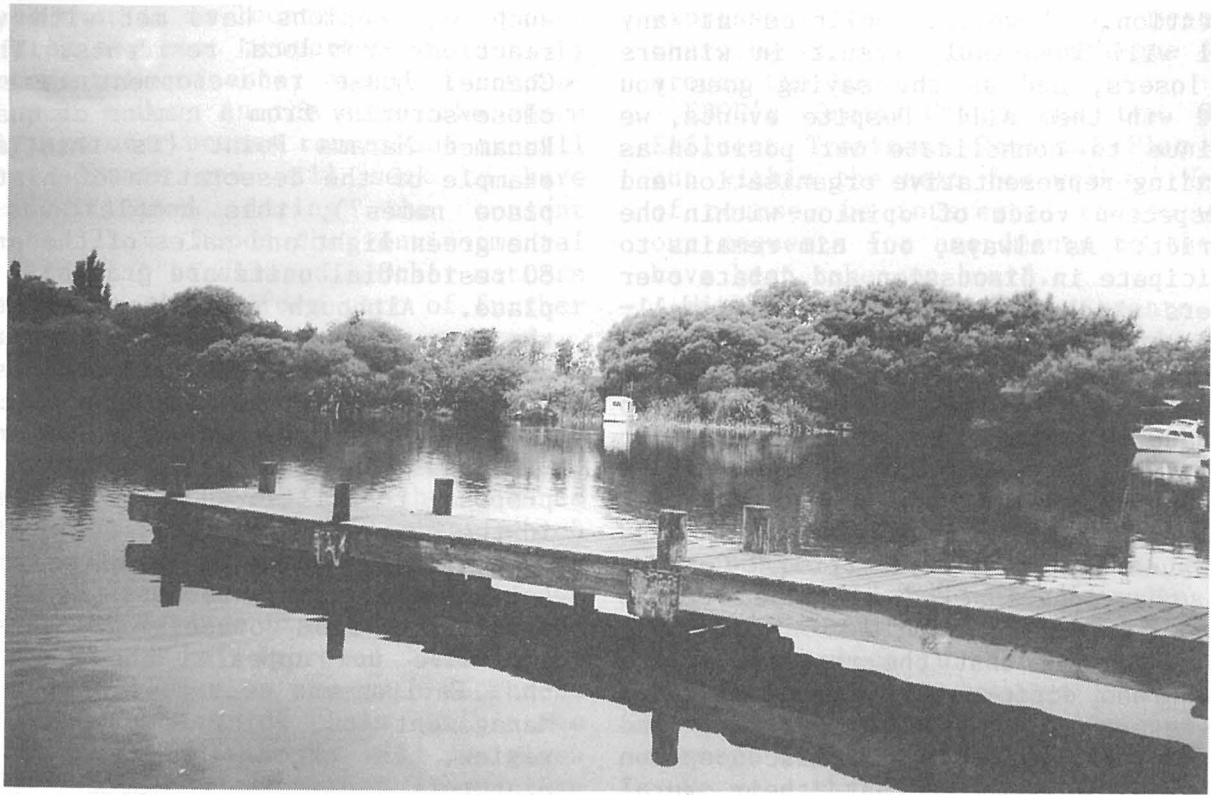


## Lake Rotoiti Ratepayers & Residents Association



**Kia Ora  
Greetings from the Lake**

**Otaramarae Jetty**

Can it be our imagination or is time actually passing more quickly these days. Certainly the millenium year seems to have whistled by - and we still await some real sign of summer. Perhaps some of us simply find ourselves with less hours to spend on occupational pursuits such as the work involved in voluntary community organisations like ours. Anyway, whatever the time limitations, we continue to do our best to keep abreast of local issues of importance and help represent the interests of all who seek fair and equitable treatment from those who have the responsibility of looking after the affairs of the District, particularly around our neck of the woods.

As usual, the Association has taken the opportunity to debate several contentious matters this year, a number of which remain under discussion awaiting decisions or resolutions. Despite our best efforts, some have proceeded against our wishes, although some concessions have been gained. Such are the outcomes of politics. Nevertheless, we have built a reputation and a position of strength within the District due primarily to the ongoing support received from our many subscribers, sponsors advertisers and others who have the interest of the community at heart. Our sincere thanks to you all. Here's wishing each and everyone a joyous Christmas and happy New Year.

Chairman:  
Jim Stanton  
Tel: 362 4690

Secretary:  
Mary Stanton  
Tel: 362 4690

All Mail: PO Mourea  
c/- Happy Angler Store  
Rotorua

Fax: 362 4690

# CHAIRMAN'S REPORT - DECEMBER 2000

The year 2000 has been marked by a deal of frustration and several issues of contention. However, politics at any level will invariably result in winners and losers, and as the saying goes you can't win them all! Despite events, we continue to consolidate our position as a leading representative organisation and a respected voice of opinion within the District. As always, our aim remains to participate in discussion and debate over matters which may impact upon the well-being and aspirations of our community.

The leading source of disappointment during the year was our inability to persuade Rotorua District Council to modify its proposal to increase rural rates. The subjective arguments advanced by Council provided little to convince us that such a move was justified. Coupled with the inadequacies and distortions of the 'desk top' revaluations of 1999, we are adamant that the increase in the rural/urban differential has no rational or statistical basis of support, and remain of the belief that a misconception by urban ratepayers that their rural cousins were 'not paying their share' was the real motivation behind the change.

Moreover, given the failings of 1991, we could have reasonably expected to be given opportunities to discuss and debate such momentous proposals prior to formal resolutions being drafted. Regrettably this was not the case, thereby providing a further salutary lesson for the future.

The other main cause of dismay to many was the failure of the proposed Mourea Water Supply Scheme to proceed primarily due to an overall lack of support from some sectors and concerns over escalating costs for the remainder. Council has agreed that this does not change the case for a significant number of Mourea residents who have unsatisfactory water supplies and is assessing alternative options and assistance for these people. Whilst this has inevitably delayed the process once more, we will continue to help in facilitating the best possible outcome for all concerned.

Development projects always give rise to some concerns, particularly the potential long term impact in areas such as ours which most recognise as being a sensitive part of the environment,

especially the lakeside settlement zone. Recent decisions by Council in approving such applications have met with varying reactions from local residents. The Ohau Channel Lodge redevelopment came under close scrutiny from a number of quarters. Renamed Marama Point (is this another example of the desecration of historical place names?), this complex was given the green light and sales of the proposed 80 residential units are gradually taking place. Although some disquiet remains, the statutory process and community consultation saw a number of concessions and conditions put in place which will hopefully mitigate most areas of anxiety.

Another issue causing concern is a proposal to utilise an existing residence in the heart of Okere Road for a licensed cafe. Council has again given approval (with conditions) despite considerable opposition from other local residents who have now appealed the decision to the Environment Court. The Resource Management Act, which is presently under review, is often implicated by both Statutory Bodies and objectors as being the vehicle which allows differing interpretations of legislation in terms of dealing with environmental effects.

Rotorua Energy Charitable Trust has come in for its share of criticism in recent years. Last year, a proposal was floated to transfer \$40 million of RECT funds to the District Council by way of loan or grant to retire Council debt, the intention being to reduce the burden on ratepayers by an estimated 13 percent. This Association, along with others, undertook to survey local residents for their opinions on the matter. A response rate of 12 percent (about 80 percent of these were for the proposal) was decided by the Combined Lakes Ratepayers group, who collated all results, as being not sufficiently representative to warrant pursuing the matter further.

Frequent momentary power failures have been a source of extreme frustration amongst West Rotoiti residents for some years with malfunctions and damage to computer and electronic gear being the main cause of anger. For the meantime, at least, it seems as though some strong protests to the companies responsible have triggered a satisfactory response.

The proposed Rural Refuse Transfer Station in Okere Road has not found favour with some local residents who believe that it is located not far enough away from adjacent properties to satisfy environmental concerns, and will compromise road safety in the area. We share misgivings over access routes and overall safety aspects and will seek to have these mitigated during the consent process. It is hoped that environmental fears can also be allayed. Other matters of relevance should form part of further consultation should consent be granted.

Environmental integrity is one of the prime objectives of the Association and there are a number of associated issues in which we are taking an interest. Foremost amongst these is the advance of the Lakes Management Strategy which appears to now be making some progress following agreements between Te Arawa Trust Board, Rotorua District Council and Environment BOP. Improved management of our lake resources are much dependent upon the success of this initiative and it is hoped that we will be given the opportunity for further input into aspects which have a direct impact on our catchment area.

Submissions from both the Association and the Lakeweed Control Society in respect of RDC's application to renew its resource consent for wastewater discharge resulted in a virtual agreement to our proposals for five-yearly reviews of nutrient discharge limits and greater levels of monitoring for water quality at the pre-hearing meeting.

The Lakeweed Control Society is proposing to change its name to 'Lakes Water Quality Society' to reflect its wider role adopted earlier this year. We will continue to work in association with the Society in the quest to achieve the best outcomes for our lake. Recent climatic and other changes highlight the need for further research into issues such as algal blooms and changing weed patterns and these will be discussed at a scientific forum to be held next March.

Concerns over the upgrade of the Okere Landing Jetty late last year have largely been remedied. However, an agreement to extend the length of the jetty remains outstanding due to a lack of commitment by RDC. At time of writing

we are working with local residents to seek completion of the project. We are also awaiting Council response to concern expressed over the current method of charging licence fees for private jetties around the lake.

EBOP's Draft Change to the On-Site Effluent Treatment Regional Plan is due out within the next few weeks. We will, of course, be interested to see whether our requests for amendments to the rules have been taken on board.

With few extreme weather events having occurred this year, Rotoiti lake levels have not caused any great concern with generally good control being maintained. EBOP have recently installed equipment which allows gate operations at Okere to be controlled by engineers in Whakatane. This has coincided with the removal of the public telephone answering facility which provided lake level readings from the Telemetry tower. Since that time, there have been further indications that variations remain between EBOP readings and local benchmarks. A request for comment from EBOP remains unanswered.

We were thrilled to see one of our most respected elders, Theo de Lange, receive a District community award in recognition of his many years of outstanding contribution and service to Rotorua.

This has been an unsettling year for the committee with the sad passing of Maureen Doherty and the resignations for various reasons of Michael Gill, Gillian Marks and Bill Unwin. Their voluntary contributions along with those of present committee members have all helped in representing the interests of the community. There is an obvious need for others to make themselves available for committee if we are to maintain the strength and standing of the Association.

Whilst there will inevitably be some disagreements with our two local bodies, the overall assistance and co-operation received from both Councillors and staff is readily acknowledged. May I also take this opportunity to sincerely thank all of our subscribers and advertisers for their support and encouragement. We look forward to your continued backing over the coming year.

**JIM STANTON**



## NOTICE OF ANNUAL GENERAL MEETING

OF THE

# Lake Rotoiti Ratepayers & Residents Association

to be held at

Pikiao Rugby League Clubrooms, Takinga Street, Mourea

10.00 am Sunday, 14 January 2001



### AGENDA:

- |   |                            |   |                       |
|---|----------------------------|---|-----------------------|
| * | Welcome                    | * | Financial Report      |
| * | Apologies                  | * | Election of Committee |
| * | Minutes of Previous A.G.M. | * | Guest Speakers        |
| * | Matters Arising            | * | General Business      |
| * | Chairmans Report           |   |                       |

*Light refreshments available at conclusion of meeting*

---

### MINUTES OF THE ANNUAL GENERAL MEETING OF LAKE ROTOITI RATEPAYERS & RESIDENTS ASSOCIATION HELD AT PIKIAO LEAGUE CLUBROOMS ON SUNDAY 9 JANUARY 2000 AT 10.00AM

**PRESENT:** Jim Stanton (Chairman), Mary Stanton (Secretary), Michael Gill (Treasurer), Maureen Doherty, Bill Kingi, Gillian Marks, Nick Miller, Bill Unwin, Hapi Winiata (Committee), Grahame Hall (Mayor RDC), John Keaney (Chairman EBOP), Charles Sturt (RDC), Rosemary Michie (EBOP), Bob Gray (RDC Lakes Inspectorate), Barney Jewell (Chairman CLRA), and approximately 40 ratepayers and residents.

**APOLOGIES:** Steve Chadwick (MP Rotorua), Max Bradford (MP), Tai Eru Morehu (EBOP), Dave Pilkington (RDC), Theo de Lange, Ian McLean, Harete Phillips, DM Stewart, Fred Whata.

The Chairman welcomed those present and thanked the invited guests for their attendance. The meeting commenced with a prayer.

1. **Minutes of the Previous Annual General Meeting.** Held at the Pikiao League Club Rooms on 10 January 1999 were confirmed as a true and accurate record.

Ted Thorne/John Leary                      Carried

2. **Matters Arising.**

- a. **Lake Safety and Control.** Problems caused by Jetskis remained a concern with ongoing reports of speeding in restricted areas, and injudicious use. It was noted that jetskis were required to operate under the same rules and regulations as other motorised craft. Legislation also provided the opportunity for Local Authorities to require jetskis to bear some form of identification. However, it was acknowledged that catching and identifying transgressors was difficult. As well, there was a natural reluctance by some people to testify in cases of prosecution. Education remained a key strategy in dealing with the issue and the importance of continuing to report incidences was reiterated. Signage on jetties outlining penalties was also suggested as a means of deterrent.

The question of reporting incidences to RDC again came under scrutiny with some people not knowing whether calls were being responded to since they had received no subsequent contact or feedback. It was agreed that RDC be requested to review their procedures and report back to the Association accordingly.



- b. **Mourea Water Supply.** It was noted that the final survey of residents to determine support for this scheme had just recently been completed. This had resulted in RDC declaring a Special Order to install a community scheme in the Mourea/Okawa Bay area. Accordingly, letters had been sent to all affected property owners.

Richard Amery, Michael Gill and Maureen Doherty all raised questions over the methodology used by Council to determine the amended supply area, in particular Okawa Bay. They believed that there had been insufficient support in that area to warrant inclusion. Also, there was a suggestion that follow up action to the initial questionnaire, plus the addition of Council Reserves in the equation may have resulted in manipulation of the overall figures.

It was pointed out that the Association had always acted as a facilitator in promoting a water supply for Mourea. It had assisted in identifying property owners where Council records had been deficient as well as encouraging owners to respond to the questionnaire in an attempt to ensure that the result reflected the greatest possible coverage. The decision on nominating the supply area rested entirely with Council. Property owners now had the opportunity to submit any objections which would be considered by an independent arbitrator.

Richard Amery proposed a motion that:

'the LRRRA requests RDC to re-consider the inclusion of Okawa Bay in the Proposed Mourea Water Supply scheme on the basis that the full facts and costings including connection from property boundaries had not been satisfactorily presented, and that Council owned property had been utilised to influence the decision'

This motion was seconded by Jill Newman. Following further debate, the motion was put to the meeting and lost.

- c. **Lakeweed Spraying.** Chairman of the Lakeweed Control Society, Ted Thorne, advised that the Society's AGM would be held 29 January 2000 at 10.00am.
- d. **Wooden Boat Regatta.** Lindsay Brighthouse noted the success of this event which was now in its third year. He outlined the programme for this year and encouraged participation in what is a unique occasion.
- e. **Private Jetties.** The Association had clarified issues surrounding public safety and personal liability regarding the use and maintenance of private jetties. Information had been published through the Newsletter in June. Some residents remained uncertain over the requirements which were restated by the Chairman.
- f. **Breach of Resource Consent.** It was noted with concern that this matter had progressed through to Court action which resulted in RDC and their contractors incurring fines. The total cost to ratepayers had been in the region of \$50,000. The matter had been debated by Ratepayer groups during the year and although we remained unhappy with the outcome, it had been put to rest. Council representatives present assured ratepayers that lessons had been learnt and steps taken to preclude future occurrences.

3. **Chairman's Report.** Was presented by Jim Stanton and adopted accordingly.

Ted Thorne/Lindsay Brighthouse      Carried.

#### **4. Matters arising from Chairman's Report.**

- a. Retiring RDC Debt.** Lindsay Brighthouse spoke further on his proposal to retire the current \$40 million debt carried by RDC, through the transferral of monies from RECT by way of loan or grant. He reiterated the reasoning behind the suggestion and expressed disappointment over the apparent delays by RDC in progressing their investigations into the feasibility of such action. Mayor Hall stated that there were a number of issues still to be debated and resolved before any decisions could be made. John Keaney said that there were other options that should be examined such as converting RECT into a Community Trust which could well provide greater benefits to individual ratepayers.
  - b. Navigational Safety Lights.** In response to questions by Ian Summersby, it was advised that this had been a jointly funded project between RECT and RDC. The budget had been underspent after cheaper options for lighting equipment had been sourced.
  - c. Lakeweed Control.** Michael Gill said that there had not been a total weed collapse in Okawa Bay recently (as suggested) and that algal blooms were likely derived from other sources. The Chairman advised that the comments were taken from NIWA's post inspection report following annual weed spraying.
- 5. Financial Report.** The Financial Report and Audited Accounts were presented by Michael Gill and accepted accordingly. Matters for adoption were:
- a. Subscription.** Proposed that this remain at \$10 per resident/ratepayer family for the 2000 year.
  - b. Election of Auditor.** Proposed that the offer of Mrs J Morey to continue as Honorary Auditor for 2000 be gratefully accepted.

Jim Stanton/Bill Kingi

Carried.

- 6. Election of Officers.** The following members were elected to the executive committee for 2000 in accordance with accepted procedures:
- Maureen Doherty, Michael Gill, Bill Kingi, Gillian Marks, Nick Miller, Jim Stanton, Mary Stanton, Bill Unwin, Fred Whata, Hapi Winiata.

John Leary/Richard Wilson

Carried.

Outgoing committee members Tai Eru Morehu and Theo de Lange were thanked for their contributions and past efforts. Both were unavailable for re-election, Tai because of EBOP commitments, and Theo due to deteriorating health.

- 7. Guest Speakers.** Mayor Grahame Hall and EBOP Chairman John Keaney accepted invitations to address the meeting on matters related to their particular sphere of office. Subjects discussed and debated included liaison with Ratepayer groups; management of ratepayer funds; Rotorua District achievements; comparison with other districts; review of local authorities by new Government; North Ward Councillor replacement; Lakes Inspectorate boat; property revaluations; Okere jetty; lakes management; environmental protection; past and future changes to local authorities; role of Councils and bureaucracy; economies of expenditure and user pays; investments and assets - Port of Tauranga and RECT.
- 8. Lakes Inspectorate Report.** RDC representative, Bob Gray, addressed the meeting on aspects of lake safety and control, outlining current issues and concerns, and responding to comments and questions from the floor.

## 9. General Business.

- a. **Replacement of Okere Jetty.** Concerns over RDC's recent replacement of the Okere landing jetty were brought up for discussion. The timing, design, workmanship, and lack of prior notification and consultation have been subject to criticism and are issues requiring further debate and resolution. Amongst questions raised were the apparent double standards in resource consent requirements relating to some RDC projects and those initiated by private property owners. The following (amended) motion was proposed in relation to the matter:

'that the LRRRA request a meeting with the District Manager and Parks & Recreation officers to seek an explanation in regard to present actions, and allow a deputation of ratepayers to voice their concerns over the handling of the issue'

Richard Wilson/Ian Summersby Carried.

- b. **Footpath - Gisborne Point.** The long standing concerns over a lack of footpathing along SH30 between Gisborne Point and Emery's Store were again raised by Cynthia and Bob Armstrong. Along with other residents, they believed that safety was being compromised in an area of increasing population and traffic movement. It was particularly hazardous for children and those with prams etc. The Chairman noted that RDC's revised footpath policy of several years ago placed this area some way down the priority list. The Association would support further representations towards reviewing the priority.
- c. **Lake Water Quality.** Rewa Hunuhunu said that the water in Lake Rotorua had recently become very murky and questioned the source of this occurrence. Maureen Doherty agreed that there had been a change and had spoken to EBOP scientist, Thomas Wilding, about it. EBOP representatives undertook to investigate further. It was reiterated that the 'hotline' could be utilised to report such incidences.
- d. **Mourea Boatramp.** Local fishing club members requested an update on this project. RDC had indicated that construction could commence this month. The Association would approach RDC to determine current progress.

10. **Closure.** There being no further business, the meeting closed at 12.30pm.

NB: These Minutes will be confirmed at the Annual General Meeting to be held Sunday 14 January 2001. The Financial Report will be available at this meeting.

## 'THE HAPPY ANGLER'

S.H. 33, MOUREA Ph: 362 4709  
(Open 7 days)

- Pizzas/Chicken Schnitzels/Potato Wedges
- Cakes/Biscuits
- Sandwiches/Filled Rolls
- Grocery Requirements
- Post Office
- Videos
- Fishing licences/Lures/Flies

## For Lake Property Sales contact The Professionals

If you are looking for a proven sales record with confidentiality assured  
- contact us at McDowell Real Estate. Our clients will receive the finest  
service in Real Estate.



BETTY SHEPHERD  
Lakes Specialist

A/H (07) 345 9162  
Mobile: (025) 997 711  
20 Million Dollar Club  
Top 10% NZ Wide



**The Professionals**

McDowell Real Estate Ltd MREINZ

1290 Eurera Street, Rotorua  
Ph. (07) 348 4159 Fax (07) 347 7071





**POLICE**  
Nga Pirihimana O Aotearoa

**BLUEPRINT**

Some of you people deserve a pat on the back for answering our calls for help to solve some of the many burglaries and thefts throughout the year, not only in your area but also in town - keep it up! We want to clear every crime we can. It still worries me, and every other cop, when firearms are stolen so review your security cabinets please.

The dumping of old car bodies and other rubbish behind the Pikiaro clubrooms is not on! I have already been successful in tracking down the owners of some of the rubbish, so don't risk it. You could end up with a hefty bill too.

Reports of cannabis growers in your area have started landing on my desk. We will check these out and have a helicopter at our disposal if required. Keep those calls coming in about anything suspicious happening out your way.

The only other thing - no we haven't caught him yet... Dean VINCENT has successfully eluded the police and everyone else for the past seven months. The longer it takes to catch up with him only means it will take longer for him to complete his sentence.

So a very merry Xmas to all of you and a special thank you to the management and staff of the Okawa Bay Resort for all your help so far.

Senior Constable George Anaru  
Te Ngae Community Policing Centre

## Lake Inspectors Report

**Navigation Buoys.** A previous report referred to the need for more 5 knot, two hundred metre buoys, especially in the area from Emery's Store to Hinehopu. This was effectively buoyed and results were immediately noticeable, with a cessation of in-shore skiing. Unfortunately, some people in the area showed their dislike of the new buoys by cutting four of them off and removing them. These buoys are expensive to install and any vandalism or theft is a sheer waste of ratepayer resources.

There is a substantial penalty to be handed down to offenders if apprehended. We would appreciate information about anyone seen interfering with navigational aids. To catch the culprits is in everyone's interest!

**Regulatory Issues.** Rick Holden will continue in his regulatory role this summer in the same vessel 'Mal Hombre', radio call sign ZMY2185 Phone 3627676.

Concern has been expressed in previous reports about the boat behaviour of some Rotoiti residents. Local boaties should set an example to visitors. However, a few local boat operators continue to infringe the 5 knot rule, especially in-shore at Gisborne Point and Te Arero Bay. One resident even considers it fair to encourage his young son to operate a jetski at speed close to shore inside the 5 knot buoys at Gisborne Point. Take note, there will be no more pleas for co-operation! A monetary penalty and name publication is the next option.

Dave Pilkington

## Mobile Library Calendar

**Tuesday Route 2000/2001**

**Fortnightly from 22 August 2000**

08.50 - 09.15 Wharetoroa Drive  
09.30 - 10.00 Rotoma School  
10.05 - 10.25 Rotoma Store  
10.30 - 10.50 Rotoiti School  
11.20 - 11.45 Mourea Happy Angler Store

The Mobile Library carries a good selection of

- \* Adult and Childrens
- \* Fiction
- \* Non-fiction
- \* Large print
- \* Magazines
- \* Talking books
- \* New Zealand Fiction & Non-fiction
- \* Music Cassettes and C.D.'s
- \* Videos

Special requests can be made for specific items.

# PARADE OF THE WOODEN BOATS

**SUNDAY - 4 FEBRUARY 2001**

The Annual Lake Rotoiti 'Parade of the Wooden Boats' is scheduled for Sunday 4 February 2001. Entries are now open. This unique event has become a recognised part of the New Zealand boating calendar and attracts wide interest from devotees of traditional boats - particularly those of our inland waterways.

Over the last four years, the quality of our 'Rotoiti' fleet has been upgraded immensely - thanks to the Wooden Boat parade which encourages owners to get their boats 'tarted up' for the big day. Besides the classics, the carnival atmosphere has brought out many more unusual entrants each year.

The 2001 Parade is planned as a casual picnic day - strictly BYO. Crews should bring their own beach gear and BBQ if you wish. There will be some surprises but after last year's major millenium effort, the emphasis is on a relaxed laid back day.

Seven categories of prizes are up for grabs - best presented boat; best dressed

crew; etc, so get out the paint brush, and all the fancy old gear, and start getting ready. The organisers have a good data base of previous entrants and most should have been contacted by now. If you haven't received notification, please get in touch with us at the address or contact numbers below. New entrants, especially from new arrivals on the lakes, or boats under renovation, will be most welcome.

The assembly will be in **OKAWA BAY**, (not Okere Arm as previously) and the destination is secret - just follow the lead boat! Please hurry those entries in to:-

The Registrar  
Parade of the Wooden Boats  
PO Box 2008  
ROTORUA

For any further details, contact either Brentleigh Bond Ph (07)3624700 or Lindsay Brighthouse Ph (07)3624876. **SEE YOU THERE!**

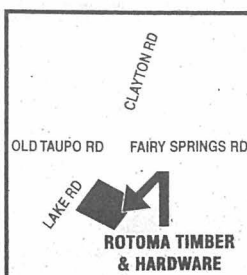


## TRY THIS!

### FOR EVERYTHING YOU NEED AT THE LAKE THIS YEAR

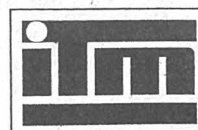
- TIMBER
- HARDWARE
- BATTS
- GIB BOARD
- TRUSSES
- PRENAILS
- MOULDINGS
- FENCING
- LANDSCAPING
- DECKING
- NAILS
- HARDIES PRODUCTS
- PARTICLE BOARD
- PLYWOOD

**SEE THE TEAM AT**



## ROTOMA TIMBER & HARDWARE

163 LAKE ROAD - ROTORUA  
PH 07 347 7023 FAX 03 346 0768  
or email us at [rotoma@xtra.co.nz](mailto:rotoma@xtra.co.nz)



# LAKE ROUNDABOUT

**Rural Refuse Transfer Station.** Rotorua District Council have now made separate application for Resource Consents for the Proposed Okere Road Transfer Station to cover land use, and air and ground discharges. RDC and Sigma Consultants held an on-site meeting with submitters and residents in mid-November which identified a number of concerns and objections regarding location, access and traffic safety.

The Association tendered a late submission (due to a misunderstanding over the purpose of the consent application) which has been accepted. The submission essentially outlines concerns in respect of the potential traffic impact on the local community, and safety surrounding access to and from SH33. Site location is obviously an issue particularly for adjacent property owners.

However, it is possible that this can be mitigated if environmental safeguards can be agreed upon and, equally importantly, acceptable solutions for the defining and upgrading of traffic routes. Hearing of the applications will be before EBOP (for discharges) and an appointed commissioner (for land use) probably during January 2001. Further consultation over matters such as hours of operation, cost etc can be expected following the consents process.

**BOP Trailer Yacht Squadron.** In another application, Resource Consent has been requested by BOP Trailer Yacht Squadron who want to establish a secure hard stand for up to 50 yachts on private land opposite the Okawa Bay Reserve. Some informal consultation between the Squadron and our Association took place earlier this year when we agreed in principle with the proposal which was then for 'around 30 yachts', and sited further to the west.

We have opposed the current application in part, principally in regard to siting, maximum capacities, and issues regarding use of the Reserve. We have indicated that a modified proposal could be acceptable. The Hearing of this application is set down for 23 January 2001.

**Ohau Channel Camp redevelopment.** In a further application, Taradale Properties have requested consent to excavate about 300 cubic metres of sediment to form an access channel from the Ohau Channel to their planned residential complex on the old camp site. This was proposed as part of the original consent to establish the new development, and was not opposed in principle at that time. The Hearing for this application is set for 18 December 2000 which will probably precede receipt of this Newsletter.



Hinehopu



## LAKE ROUNDABOUT Cont.

**Jetskis.** Our original submission with regard to the re-development of the Ohau Channel camp highlighted concerns over the likely (increased) use of jetskis within the Ohau Channel itself and sought regulatory controls to ban them from this area. Recently, RDC have furnished a report which recommends a 'wait and see' attitude.

We have written to Council requesting that they review this stance. Council has the legislative ability to restrict the use of jetskis in specified areas and we believe that they should exercise this option as an appropriate action given the sensitive nature of the Channel in terms of environmental protection, trout spawning, and local residential occupancy along its banks.

It is noted that Council has suggested Mission Bay as a designated area for jetskis and this should provide an acceptable option for residents of the proposed camp re-development. Whilst enforcement of any ban may be practically difficult, this should not preclude taking such measures if the situation warrants it.

**Ruato Bay Ski Lane.** This ski lane has been temporarily removed by RDC at the request of Ruato residents who expressed concern that safety was being compromised for bathers, and also in respect of the number of vehicles parking alongside the State Highway. Upgrading the area to include off road parking will take place in the near future. Reopening of the ski lane over the summer periods will then be reconsidered.

## TE NGAE PHYSIOTHERAPY CENTRE

Laurice Smith & Bill Unwin



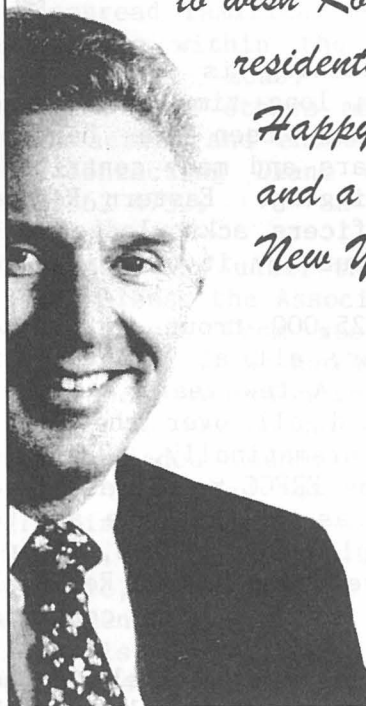
- \* Manipulative Therapy
- \* Sports Injuries
- \* Acupuncture
- \* Feldenkrais Method

8am - 6pm 553 Te Ngae Road  
Behind Owhata Medical Centre  
Wheel Chair Access Off Road Parking  
**Ph/Fax 07 345 6915**

**NZ National**



*"Rosemary and I would like  
to wish Rotoiti and Lakes'  
residents a very  
Happy Christmas  
and a prosperous  
New Year"*



Max Bradford  
National List MP  
Rotorua

For queries please phone:  
07 347 4444  
Electorate Office:  
1205 Amohia St, Rotorua

## LAKE MAINTENANCE

NOEL & SUZANNE RUEBE

### OKERE FALLS

LAWNS - GARDENS - RUBBISH REMOVED - TREES CUT -  
PROPERTY SECURITY - PUMP MAINTENANCE - PAINTING -  
TRACTOR WORK - SOIL & METAL CARTAGE - BOAT HIRE -  
BOAT MAINTENANCE

PHONE 0-7-362 4814 MOBILE (025) 948 730  
P.O. BOX 495 ROTORUA

## DEANS CANVAS & UPHOLSTERY CO



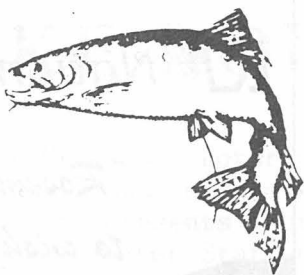
*Specialists in:*

- \* Window Awnings
- \* Caravan Awnings
- \* Trampoline Mats
- \* Tarpaulins
- \* Boat Canopies & Covers
- \* Marine Upholstery
- \* Furniture Upholstery
- \* Calf Covers
- \* All Repairs & Restitching

Rotorua: Colin Deans (07) 345 3415 A/H

36 White Street . Rotorua (07) 348 7209

## ANGLERS' CORNER



### Richard Wilson

eastern end of the lake is very hard with catches reported to be as low as 10 percent of the 1999 level. This has resulted in very little pressure with hardly anyone fishing these locations.

**Trolling and Harling.** This is hard over the whole lake, the persistent angler achieving moderate results only. Try shallow trolling at change of light morning and evening and around midday using 3 colours of leadline, mainly in the area from Manupirua Springs to Pateko Island, and from Gisborne Point to Hinehopu. For harling, try the area from Ngarehu Point to Motuoha Point. The best fishing at the moment can be gained from the areas around Waipuna Bay and Koutu Bay, harling and shallow trolling one colour with a long trace. Take care in these areas as there is lots of weed.

If you really want good consistent fishing, try Lake Rotorua where the quality of trout has much improved over recent years. Wishing everyone a very happy Christmas and New Year and hope you have a successful fishing holiday.

**Tight lines.**

Lake Rotoiti fishing is shot! This is the word from long time locals who say that this has been the hardest fishing in 40 years and many contribute this solely to jigging. Eastern Region Fish and Game officers acknowledge that fishing is hard but say it will improve around March.

ERFGC release 25,000 trout into Lake Rotoiti each year, all at the eastern end of the lake. A few years ago when fish were released all over the lake, fishing improved dramatically. Pressure needs to be put on ERFGC to release more fish over all areas of the lake and to **BAN JIGGING!**, so please telephone, write, fax or email Steve Smith (ERFGC Regional Manager) and let him know your concerns and feelings.

**Fly Fishing** - The Ohau Channel is the pick of anywhere around the lake with several 5kg plus catches reported recently. Fishing the streams at the

## PROPOSED OKERE ROAD CAFE

An application for Resource Consent to convert the existing residential building at 132 Okere Road for the purpose of establishing and operating a licensed cafe (hours of operation to be 8.00am to 10.00pm daily) was publicly notified in June. The proposed activity is non-complying within the Rural E zone.

In her submission to Council, the applicant, Sarah Fabian, outlined a need for such a facility in the ever growing Okere Falls area which hosts several thousand tourists in peak season who come to enjoy the unique and diverse outdoor activities provided. It was noted that the location had historical significance as a previous carriage stop and that the proposed cafe (intended max seating for 50) would emphasise excellent coffee, good food, low volume music, art and culture, rather than being a 'rowdy drinking hole'.

It was suggested that environmental effects would be minor. Parking would be provided for seven vehicles with most customers expected to arrive by foot; noise levels would be low in keeping with the intended ambience; effluent disposal would comply with regional requirements.

Council received 46 submissions in respect of the application, 17 in support and 26 opposing. Most supporters were domiciled outside of the area whilst most of those in opposition lived locally. A number of those in support did so subject to conditions being imposed. Likewise, a number of objectors were not against the concept but opposed to the location. In accordance with standard practice, Council considered potential effects against the provisions of both the Resource Management Act and the Rotorua District Plan. Having done so,

## ***Proposed Okere Road Cafe Continued***

and taking account of written and verbal submissions, they decided that consent should be granted subject to various conditions including:

- . maximum number of customers/diners at any one time not to exceed 28.
- . parking and vehicle crossing to be to satisfaction of District Engineer including no parking lines on Okere Road to prevent verge parking.
- . effluent disposal system be designed and inspected by Registered Engineer.
- . noise levels not to exceed District Plan requirements with periodic monitoring to be carried out over first 12 months, then annually.

Following Council's approval, an appeal was lodged with the Environment Court by legal representatives for 17 Okere Road property owners and is not likely to be heard for some time. Grounds for the appeal are stated as being:

- . assessment of environmental effects so deficient as to render application a nullity.
- . decision contrary to sound principles of resource management and does not achieve the purpose of the RMA.
- . decision does not avoid, remedy, or mitigate adverse effects such as noise, traffic, effluent drainage, and effects on amenity values.
- . site unsuited to proposed activity.

As with all such litigation, the likely costs of the appeal are substantial. The appellants sincerely believe that the granting of this application has widespread ramifications for future such proposals within the Rural E lakeside settlements zone. Accordingly they suggest that others may wish to support this action and encourage them to do so by contacting Diane or Ron Martin Ph (07)362 4752.

Footnote: Up until the closing time for submissions, the Association had received no requests from residents to act on their behalf. We had received indication that local reaction was divided. In the event, we raised no specific objection but reminded Council in our submission that they had obligations prior to granting any such consent in the Rural E zone, particularly in respect of noise, traffic, parking, effluent disposal, and amenity.

It is noted that Sarah Fabian has twice been quoted in the media as saying that she would abandon the project in the event of any significant local opposition. She may wish to honour the commitment which would necessarily require cancellation of the consent authority. It would, of course, save the appellants a lot in time and money.



Okere Arm - Whangamarino



## BOAT UPGRADE

**Lakes Inspectorate Boat.** We first made request for RDC to upgrade the present boat about three years ago. Having agreed to purchase a replacement in principle in 1998, there has been a lot of procrastination since, revolving around a subsequent decision to explore the option of contracting out the maintenance operations for the lakes (the tendering process for which is taking an ion), and more recently a suggestion that 'any replacement would be dependent upon discussions with Environment BOP regarding what the division of responsibility for the lakes is between Council and EBOP, and the commensurate level of funding each should contribute', the expected timeframe for a conclusion to be reached estimated as 12 months.

We have again written to Council expressing frustration and dismay over what seems to be the ever protracting nature of this process. We believe that the issues of tendering for maintenance and statutory divisions of responsibility have been on the books for around two years and should be expedited forthwith. We have requested that Council give us some assurance that an appropriate replacement boat will be purchased in time for use by the summer of 2001-02.

### THE MOST EXPERIENCED 'LAKE PROPERTY SPECIALISTS' IN THE DISTRICT

FOR EXPERT AND CARING REAL  
ESTATE SERVICE ENQUIRE TODAY

**LAKE ROTOITI**  
and Lakes Okareka, Tarawera,  
Rotorua, Rotehu & Rotoma

**Joan Piesse AREINZ Brian Piesse**

Phone Office 0-7-348 5058  
A/hrs 0-7-362 7755 (Ph/Fax)  
Mobile 025 952 227

Cnr Hinemoa & Amohia Streets,  
PO Box 77, Rotorua  
DX No. JP30040;  
Facsimile: 0-7-348 2381

**L.J. HOOKER**

Nobody does it better™



AT THE OKERE FALLS STORE...

## LIQUOR STORE



### FAIRLY FAST FOOD

FISH, CHIPS, BURGERS, ETC.

Hours 8am - 7pm 7 Days  
Orders Ph (07) 362 4854

UNDER OLD MANAGEMENT

by Boat or by Car, you know where we are

## ROTOITI LAKE CRUISES

### M.V. HINEKURA



Your hosts, Ted & Gael Boucher  
Operating from Okawa Bay Lake Resort

- \* Fishing (our speciality)
- \* Scenic Charters
- \* Barbecues
- \* Picnics
- \* Hot Pool Bathing and Evening Trips

Departs Okawa Bay Resort  
and other sites by arrangement

Business Phone (07) 362 4599 Home Phone (07) 362 4815

c/- P.O. OKERE FALLS, ROTORUA, N.Z.

# West Rotoiti Fire Force News

The AGM for the Fire Unit was held in October. Due to heavy work commitments, Willie Shaw stood down as Chairman after 10 years in the job and was replaced by Barry Wade, a local farmer from Otaramarae. Willie is still a Rural Fire Officer and CFO for the unit. The unit continues to receive strong support from the local community, RDC and the Fire Service. Training nights are held every two weeks and we recently had a session on fuel fires at the Rotorua airport.

The unit had another busy year and now is the time to think seriously about fire prevention and avoidance for the summer, particularly as the forecast is for a long hot season. Take particular care in windy conditions as the West Rotoiti community lives amongst a lot of forest and other flammable vegetation. The unit has

attended recent incidents where small fires have ignited adjoining vegetation and had the potential to cause major damage.

If planning a rubbish fire, remember to check whether a fire ban is in place. All fires other than those in an enclosed incinerator or barbeque require a permit. Permits will not be issued if a fire ban is in place. If within one kilometre of a DOC reserve, contact the Department of Conservation (Ph 349 8211) for permits, otherwise contact Fletcher Challenge Forests Waiotapu (Ph 366 1000).

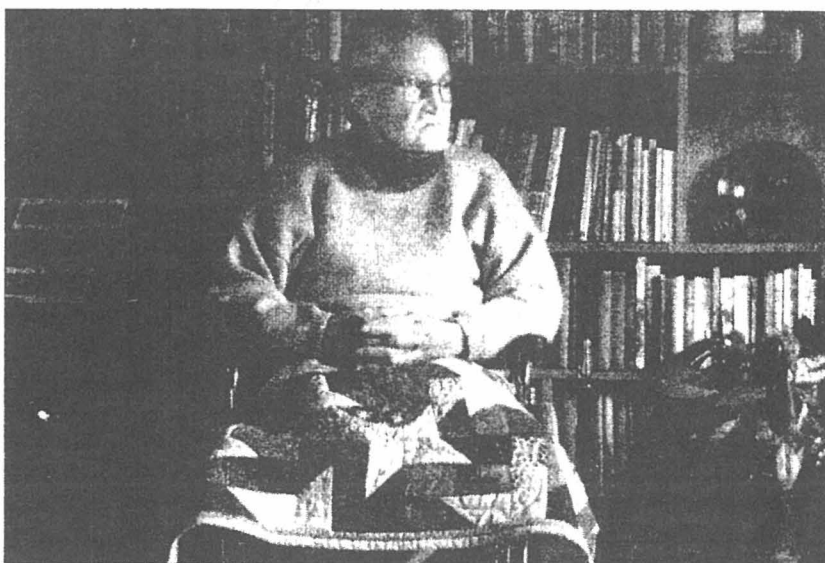
Any queries about the unit should be directed to the secretary, Keith Smith (Ph 362 4178), Noel Ruebe (Ph 362 4814), Ted Boucher (Ph 362 4815) or Dan Arrowsmith (Ph 362 4477).

**HAVE A FIRE SAFE CHRISTMAS AND SUMMER -  
REMEMBER TO DIAL 111 IN AN EMERGENCY!**

## DISTRICT COMMUNITY AWARD - THEO DE LANGE

Last month, we had the pleasure of seeing one of our outstanding local residents, Theo de Lange, receive a Rotorua District Community award. As many will know, Theo has contributed an enormous amount of time and material assistance to a great many community and service organisations within and outside of the District.

Until circumstances resulted in his becoming a double amputee about a year ago, Theo had remained an invaluable and long time committee member of our Ratepayers Association, bringing a wealth of experience and knowledge of Rotoiti where he and his wife Marjorie have lived for the past 36 years. During this time, he became involved in numerous activities,



*Theo de Lange looks out on his favourite spot.* PHOTO: JOHN BORREN 31100J2

in particular as a Foundation member of the Lakewood Control Society, Patron of West Rotoiti Fire Unit (having donated the first fire engine), volunteer operator for the Rotorua Marine Radio Service, foundation member of the BOP Trailer Yacht Squadron, Honorary Lakes Warden, and member of the

Manupirua Springs Committee. Theo gave his time and energy to many other organisations both locally and nationally.

The formal recognition of the many years of willing effort and generous contribution made by this unassuming yet outstanding elder statesman of our local and district community is most richly deserved.

## 2000 COMMITTEE

### CHAIRMAN

### DEPUTY CHAIRMAN

### SECRETARY

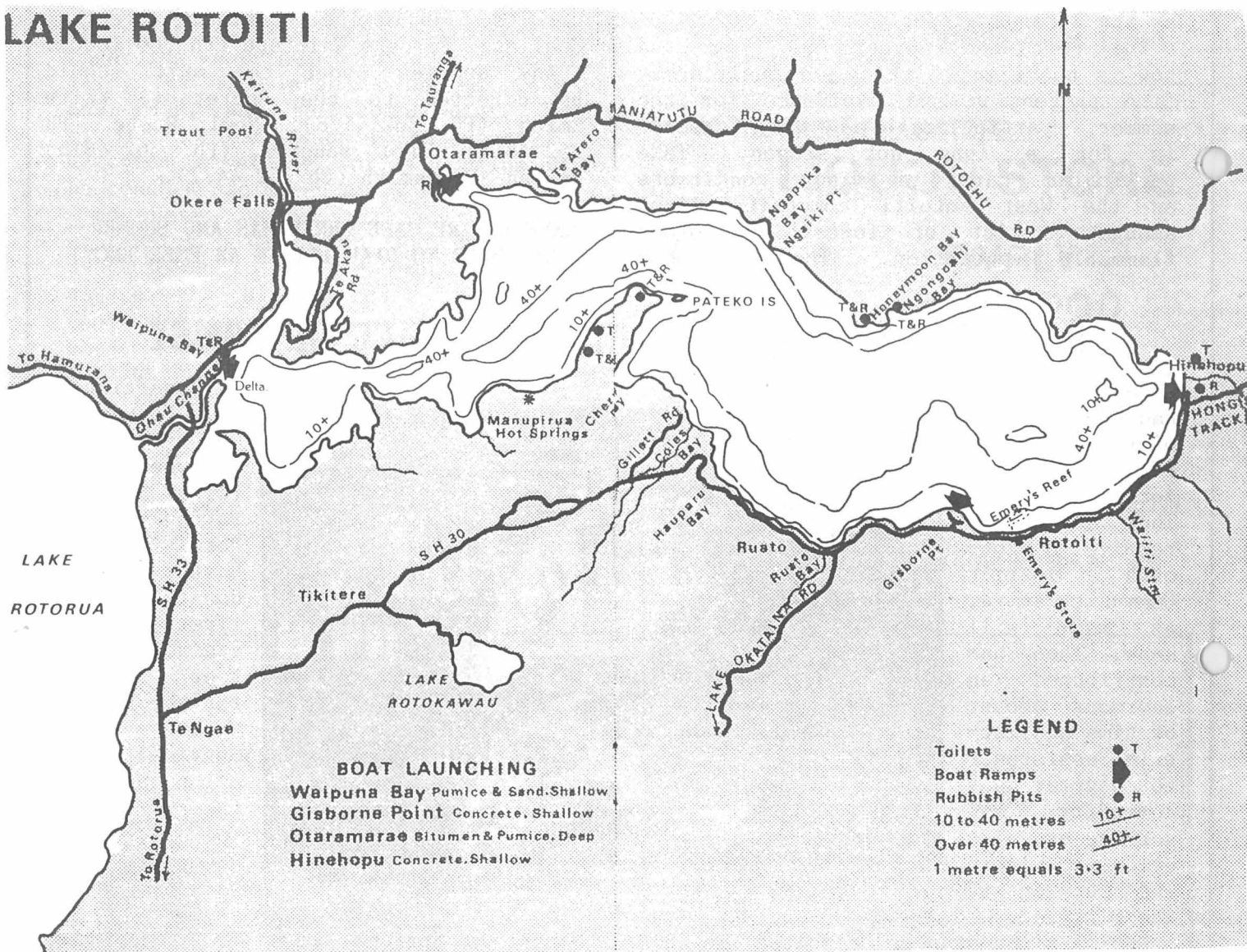
### TREASURER

### COMMITTEE

Jim Stanton  
Fred Whata  
Mary Stanton  
Colin Deans  
Iris Gibb  
Bill Kingi  
Tania Kingi  
Nick Miller  
Pare Merito  
Hapi Winiata

Okawa Bay, Mourea	Ph 3624690
Okere Falls	Ph 3624842
Okawa Bay, Mourea	Ph 3624690
Lewis St, Rotorua	Ph 3453415
Te Akau Road	Ph 3436368
Parcliffe	Ph 3457186
Mourea	Ph 3624671
Te Akau Road	Ph 3624747
Otaramarae	Ph 3624092
Rotoiti East	Ph 3487783

## LAKE ROTOITI



### IMPORTANT & USEFUL PHONE NUMBERS

**Fire, Police, Ambulance,  
Search and Rescue 111**  
Accident and Emergency  
medical care centre 348 1000  
Urgent Pharmacy 348 4385  
**ROTORUA HOSPITAL** 348 1199  
Poison Information (03) 474 7000

### USEFUL INFORMATION

Dog control - Rotorua  
District Council 348 4199  
Environmental pollution  
hotline 0800 738 393  
Lakes Inspector  
Dave Pilkington 348 4199  
SPCA 349 2955

Police Station Te Ngae 345 3453  
TrustPower emergency  
number 0800 499 699  
*Rubbish bags are collected on  
Monday mornings*