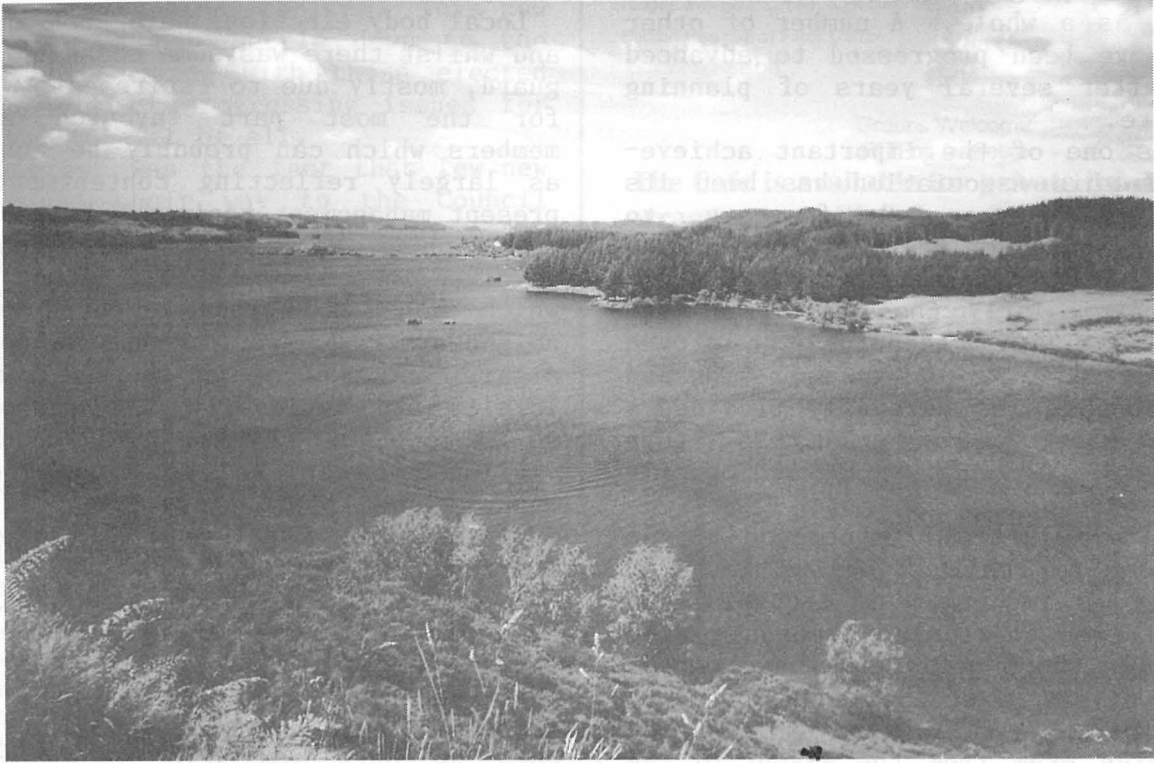




## Lake Rotoiti Ratepayers & Residents Association



Wairau Bay

### Kia Ora Greetings from the Lake

El Nino is gone and La Nina is here as yet another year reaches finality. Although the weather continues to play some strange tricks, we can be thankful that Rotorua has been let off fairly lightly compared to other regions. Such a lack of volatility seems to have also affected our local political scene where the only real new faces following the triennial elections have come about through retirements. It rather suggests that we are content with the efforts of those who have served the District in recent times. Whilst this may be so, there remains a number of important issues which require further progress towards satisfactory conclusions. The Association has continued to maintain its good working relationship with the various local bodies on these matters and is confident of achieving some of the desired results.

We once again extend our appreciation to major sponsor, Placemakers Ltd, along with all other advertisers. To the Association's more than 400 subscribers, we thank you for your ongoing support and trust that our contributions continue to reflect the concerns and majority viewpoints of all whom we help to represent. May we take this opportunity to wish each and everyone a joyous Christmas and a prosperous New Year.

Chairman:  
Jim Stanton  
Tel: 362 4690

Secretary:  
Mary Stanton  
Tel: 362 4690

All Mail: PO Mourea  
c/- Happy Angler Store  
Rotorua

Fax 362 4690

# From the Chairman

The Association has again been involved in a busy schedule of events during 1998 with perhaps the triennial local body elections and inaugural Strategic Planning process being of most interest to the District as a whole. A number of other issues have been progressed to advanced stages after several years of planning and debate.

Perhaps one of the important achievements of this Association has been its ability, over a period of years, to establish and maintain a close working relationship with Councillors and Council staff, particularly those involved with Rotorua District. Adopting the proven virtues of consultation, co-operation and mutual respect has generally provided a greater platform for success than confrontation, provocation, and poorly researched requests.

Whilst some express impatience at the time taken to realise various improvements, it is important to recognise not only the ever increasing demands placed on Councils whose activities have become far more diverse over the years, but also the greater responsibilities and requirements which stem from the advent of the Resource Management Act. In applauding the opportunity to participate in future planning through the consultation provisions of the RMS, we should not forget

that this can come at a cost in terms of both time and expenditure. In our quest for optimum delivery, we need to accept that delays may often result from this due process.

Local body elections have been and gone and whilst there was some changing of the guard, mostly due to retirements, voting for the most part favoured sitting members which can probably be construed as largely reflecting contentment with present management regimes. Perhaps this is because Rotorua is not presently involved in some of the big ticket issues which beset a number of our northern neighbours. However, with some possible significant changes on the horizon both locally and nationally, there should be no time for complacency. Continued vigilance needs to be maintained to ensure that appropriate and effective decisions are made so that ratepayers remain on an equitable footing.

I wish to take this opportunity to thank the committee and all members for their support and encouragement over the past year. It is only through these continued efforts that resident groups such as ours are able to maintain a position of strength in helping to represent community interests.

Jim Stanton

## NOTICE OF ANNUAL GENERAL MEETING

OF THE

# Lake Rotoiti Ratepayers & Residents Association

to be held at

Pikiao Rugby League Clubrooms, Takinga Street, Mourea

10.00am Sunday, 10 January 1999

### AGENDA:

- |   |                            |   |                       |
|---|----------------------------|---|-----------------------|
| * | Welcome                    | * | Financial Report      |
| * | Apologies                  | * | Election of Committee |
| * | Minutes of Previous A.G.M. | * | Guest Speakers        |
| * | Matters Arising            | * | General Business      |
| * | Chairmans Report           |   |                       |

*Light refreshments available at conclusion of meeting*

## LOCAL BODY ELECTIONS

In our September issue, we profiled candidates for this year's triennial Local Body elections in the hope that it would not only encourage voters to exercise their democratic right, but also assist in making final choices. This now behind us, we can settle down to the business of working with those elected with the aim of progressing issues for the mutual benefit of all.

Of interest was the fact that few new faces found their way to the Council tables, unlike upheavals in many other parts of the country. The only changes to Rotorua District Council were the return of three former Councillors in Maureen Waaka, Charles Sturt and Cliff Lee at the expense of Joan Minty, Mita Mohi and Ben Benfield. In our own North Ward, both Steve Chadwick and Knocker Dean were returned, along with Charles Sturt. This was undoubtedly the toughest Ward with our local candidate, Fred Whata unfortunately missing out as did some other worthy contenders. Nonetheless, we believe that we can rely on solid backing for the most part from our three representatives.

In Regional Council (Environment BOP) circles, John Keaney and Rosemary Michie were re-elected to the Rotorua Ward with Tai Eru Morehu filling the vacancy left by the incumbent Wendy Lynch who did not stand. We can feel very satisfied in that both Rosemary and Tai are long standing Rotoiti residents. The vastly experienced John Keaney has again been elected Chairman. There are several ongoing issues in which we would seek to benefit from their knowledge and support.

The Rotorua Energy Charitable Trust which held elections in the second week of November followed the local trend by returning five out of six sitting members with the only new chum being well known personality, Turi Ngatai. Of significance was the fact that four of those elected are current District Councillors despite widespread publicity regarding concern over their candidature. With the democratic process having now prevailed, we need to pursue our objectives of ensuring that those elected provide the appropriate representation in enhancing and protecting the District in the interests of all residents and ratepayers.

## The Happy Trout Cafe

### Morning & Afternoon Teas

Devonshire Tea or Coffee  
Muffins & Cakes  
Sandwiches (made to order)  
Hot Meat Sandwiches  
Wedges with Sour Cream & Bacon  
Bottomless cup of Filter Coffee  
\$2.00



### Light Meals

Soup & Toast  
Hapuka, Chips & Salad  
Steak Chips and Salad  
Burgers & Chips  
Seafood Basket  
Roast Dinners (Fri-Sun)  
Weekend Dinner Specials

Groups Welcome  
EFTPos Available

**The Cafe is available for private functions by arrangement. Birthdays, 21st's, engagement parties etc.**

**HOURS: 10.30 am - 8 pm Wednesday to Sunday**  
**Bookings essential for evening meals.**  
**Closed Monday and Tuesday**



**Whakatane End Lake Rotoiti**

**Phone 362 7080**

## LAKE MAINTENANCE

**NOEL & SUZANNE RUEBE**

### OKERE FALLS

**LAWNS - GARDENS - RUBBISH REMOVED - TREES CUT -  
PROPERTY SECURITY - PUMP MAINTENANCE - PAINTING -  
TRACTOR WORK - SOIL & METAL CARTAGE - BOAT HIRE -  
BOAT MAINTENANCE**

**PHONE 0-7-362 4814 MOBILE (025) 948 730**  
**P.O. BOX 495 ROTORUA**

## DEANS CANVAS & UPHOLSTERY CO

**2/42 White Street • Rotorua • (07) 348 7209**



### Specialists in:

- Window Awnings
- Boat Canopies & Covers
- Caravan Awnings
- Marine Upholstery
- Trampoline Mats
- Furniture Upholstery
- Tarpaulins
- Calf Covers
- All Repairs & Restitching

**Rotorua: Colin Deans (07) 348 3753 A/H**

**2/42 White Street • Rotorua • (07) 348 7209**



# PARADE OF THE WOODEN BOATS

WAITANGI DAY - 6 FEBRUARY 1999

Planning for the second Lake Rotoiti parade of the Wooden Boats is well under-way. Many registrations have already been received from boats of all shapes and sizes so it looks like another great, unique day coming up. The organisers ask, however, that boats intending to enter hurry in their registrations - last year the rush of late entries caused all sorts of problems. As the parade next February will probably be much bigger, **Entries will close 7 days before the event** to give the organisers more time to sort things out.

A lot was learnt from the last parade. The start up and blessing will again be located in the Okere Arm with the parade ending in either Te Arero (Big Sandy) or Cherry Bay depending on the wind. Different methods of judging and prize distribution are planned. Any other suggestions to improve the day would be most welcome.

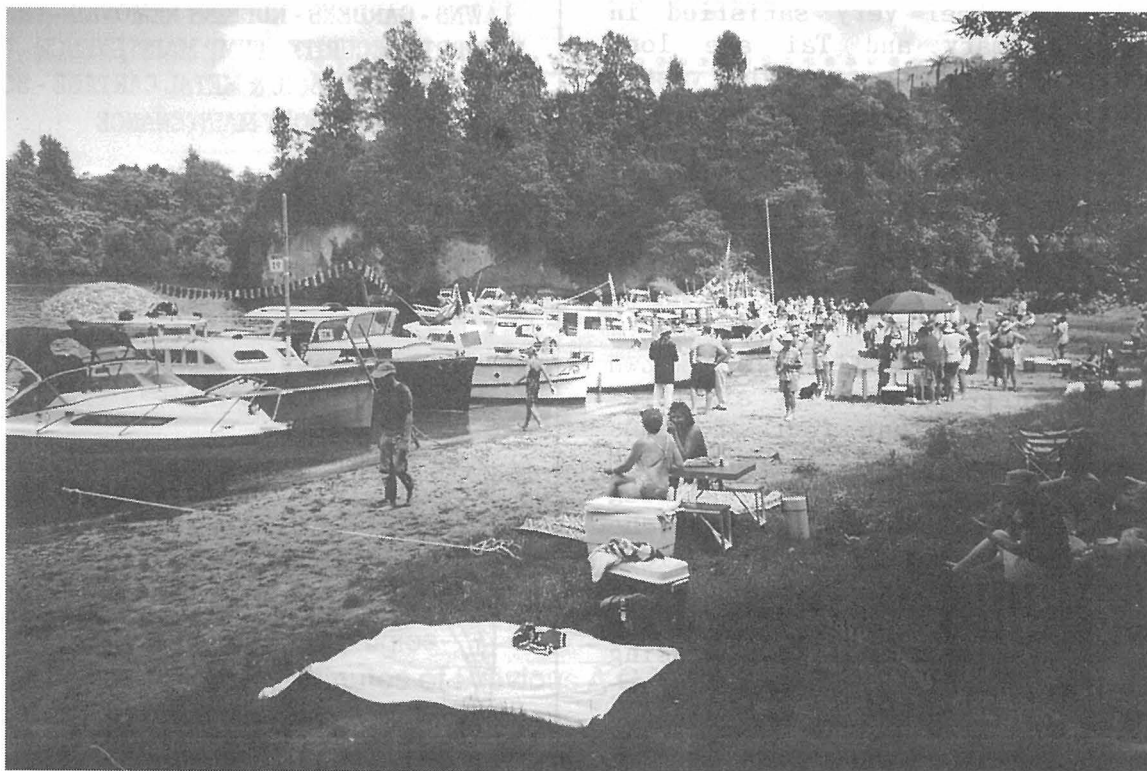
These special Waitangi Day gatherings of our lake boats are unique - so the organisers have commissioned two pennants to commemorate the day. The first pennant is very special. It commemorates the inaugural regatta and will only be available to the 35 boats which

participated. This sky blue pennant could become a real collectors item in years to come. To keep this pennant unique, the pattern will be destroyed on 31 December this year (note we have extended the time) so any orders after that will be too late.

The second pennant is for the next parade and will be available to all boats and the public. Both pennants cost \$20. Contact the organisers if you wish to order - Phone numbers listed below.

People wishing to see the parade will have good viewing from the Rotorua - Tauranga highway between Whangamarino School entrance and Okere Falls Store - or in Otaramarae Bay. Please note that no provision has been made by the organisers to provide sponsored spectator boats - so anyone wishing to see the parade from the water will need to make their own arrangements.

So, if you have a wooden boat, get your entry in! Contact the registrar, Brent Bond Ph 3624700; Lindsay Brighthouse Ph 3624876; or Gillian Marks Ph 3624804 for further details or pick up entry forms from the local shops - and start praying for good weather!





# LAKE INSPECTORS REPORT *Dave Pilkington*

## Summer Holiday Weather

Indications are that recent weather events may be quite common over the Xmas holiday period with weather generally improving during February-March. This will make Rotoiti very busy during any periods of fine weather, as the rough conditions in the coastal areas tend to bring greater numbers of boaties to the more sheltered lakes. Crowded conditions bring a greater responsibility on boat operators to be fully conversant with the 'rules of the road' to ensure safe boating.

## Navigation Beacons

Installation of navigation beacons on Lake Rotoiti has commenced with the placement of lead lights into Okawa Bay, south cardinal light on Te Akau Point, and indicator lights on the public boat ramps/jetties at Hinehopu, Gisborne Point and Waipuna Landing (Delta). Completion date for the remaining lights is programmed for October 1999. Colour and phasing of the Rotoiti lights will be as follows:

Boat Ramps	Blue	Steady Flashing
Okawa Bay Leads	Amber	Steady Flashing
Te Akau Point	Amber South Cardinal	Six quick, one long flash
Tumoana Point	Red Port Lateral Mark	Steady Flashing
Kuhara Point	Green Starboard Lateral Mark	Steady Flashing
Te Rerengaotemokai Point	Amber East Cardinal Mark	3 Quick Flashes
Te Tuki Tuki Reef	Amber, South Cardinal	6 Quick, 1 long flash
Pateko Island	Amber - West Cardinal Mark	9 Quick Flashes
	Amber - East Cardinal Mark	3 Quick Flashes

## Buoyage

Higher lake levels and high winds have taken a heavy toll of the navigation buoys during the winter. Strong winds have also hampered replacement. However, apart from a few perimeter buoys in Okawa Bay, which will require calm weather and flat water (as in no water skiers) to ensure accurate siting, all missing buoys have now been replaced.

## Regulatory Issues

Observance of the 5 knot, 200 metre rule still seems to be regarded by some lakeside property owners as not applicable to them. I regularly receive messages from people about their neighbours ignoring the 5 knot rule with specific areas of concern being the Okere Arm, Otaramarae and Gisborne Point. Visitors to the Districts lakes observe the boating behaviour of others and often follow their lead. It is the responsibility of local residents to set an example.

**SAFE BOATING!!**

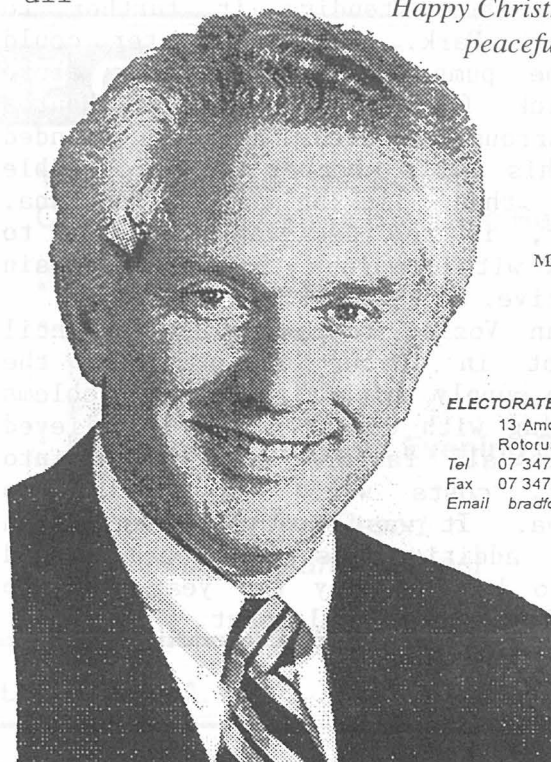
## MAX BRADFORD

**MP ROTORUA**

*Rosemary and I would like  
to wish everyone a  
Happy Christmas and a  
peaceful and safe  
New Year*



Max Bradford MP



**ELECTORATE OFFICE**  
13 Amohia Street  
Rotorua  
Tel 07 347 4444  
Fax 07 347 4459  
Email [bradform@iconz.co.nz](mailto:bradform@iconz.co.nz)

# Mourea Water Supply . . . . .

The public meeting held at Mourea on 8 November 1998 attracted approximately 70 people. In attendance were Crs Sturt, Chadwick and Lepper (RDC), Cr Michie (Environment BOP), and RDC Utilities Engineer, Adrian Vosloo. The meeting traversed the history of water supply proposals for Mourea, the options available and estimated capital costs, likely implications of each option, and a resolution regarding further progress.

Those present confirmed a virtually unanimous preference for water to be provided from an existing source (ie either Hamurana or Eastern Districts supply). Whilst abstraction from local bores or the lake itself offers cheaper alternatives, these options were not favoured due to the chequered history associated with bore security in the District, and cultural considerations in respect of lake water.

Considerable debate centred on the merits and viability of access to the Eastern Districts supply which currently serves a supply area as far as Hannahs Bay, but which has also been extended extra-territorially (ie supplied with no guarantee of continuity) out to Cooksons Road. Stuart Searle, the developer of Brunswick Park Estate and Consulting Engineer, Andy Morton, confirmed their interest in a community scheme for the next phase of development in lifestyle blocks currently in progress. They outlined a proposition for upgrading the Eastern supply pipeline from Rotorua Airport and extending it further to Brunswick Park. Off peak water could then be pumped to a reservoir above Brunswick for distribution to Mourea and surrounding areas. They contended that this was a cheaper and more viable option than linking with Hamurana. However, if the decision was made to proceed with Hamurana they would remain supportive.

Adrian Vosloo responded that Council was not in favour of utilising the Eastern supply which already had problems in coping with demand. It was believed that if all factors were taken into account, costs would be similar to Hamurana. It was expected also that a new or additional supply source would have to be found by the year 2006 to cater for future development.

As an outcome of the meeting, those present resolved that the proposal should proceed on the basis of water being provided from an existing source using the Hamurana source as a costing benchmark and with a strong message from Mourea residents that implementation should commence within the shortest possible timeframe. Opportunities to extend the proposed supply area should be investigated as there could be obvious benefits to consumers in spreading the maintenance costs.

We have since written to RDC suggesting that they should now proceed with the questionnaire to confirm support, and if affirmative, then investigate the merits of either the Hamurana or Eastern Districts supply as a matter of urgency to allow implementation to commence as early as possible in the 1999/2000 year.

## . . . . . and Sewerage

The proposed Mourea (and Reporoa) sewage schemes were dealt a heavy blow in July with the revelation that the costs provided in the preliminary Consultants Report had been drastically under-estimated. From the design phase report, it was estimated that the Mourea scheme would now cost \$2.14 million. As this was prohibitively high, alternative options would have to be found. A number of proposals are being investigated at present and several conclusions have been drawn.

The July/August heavy rainfall events provided evidence of those dwellings that were prone to high water tables, flooding and septic tank problems. Since then, most drains in central Mourea have been cleaned out and inspected. A survey of the Mourea area has confirmed that improved drainage alone is not likely to alleviate the high water table problems. Alternative methods of disposing of septic tank effluent for individual or clusters of properties must therefore be determined.

A revised policy to deal with small community sewage problems is now under development with clarification of responsibilities and funding implications being addressed with EBOP and Local Govt NZ.

## NEWS AND VIEWS

Rubbish disposal remains a contentious issue for rural communities like ours. We believe that the present Skip Sites work reasonably well if they are used in the manner intended. Unfortunately, a number of local as well as out of area dumpers abuse the facilities by disposing of refuse such as large appliances, demolition material and garden waste which not only fill the bins in short time but invariably lead to an unsightly mess in the general area.

Castlecorp do a tremendous job in emptying the bins often at short notice when they become over-flowing. The extra burden and cost of cleaning up after inconsiderate users is most unwelcome. Rotorua District Council is presently re-assessing options for rural refuse disposal and will be consulting the community with proposals shortly.

Absentee owners and holiday visitors are reminded that Council operate a weekly collection on Mondays without exception for official rubbish bags which are distributed to all home owners in Rotoiti around Christmas/New Year. Extra bags can be obtained at most retail food outlets. Please avoid leaving bags out overnight as they often become targets for stray animals.

### THE MOST EXPERIENCED 'LAKE PROPERTY SPECIALISTS' IN THE DISTRICT

FOR EXPERT AND CARING REAL  
ESTATE SERVICE ENQUIRE TODAY

**LAKE ROTOITI**  
and Lakes Okareka, Tarawera,  
Rotorua, Rotehu & Rotoma

**Joan Piesse AREINZ Brian Piesse**

Phone Office 0-7-348 5058  
A/hrs 0-7-362 7755 (Ph/Fax)  
Mobile 025 952 227

Cnr Hinemoa & Amohia Streets,  
PO Box 77, Rotorua  
DX No. JP30040;  
Facsimile: 0-7-348 2381

**L.J. HOOKER**

**Nobody does it better™**



### AT THE OKERE FALLS STORE...

## LIQUOR STORE



**Our Off Licence is open**  
**7.00am - 7.00pm**  
**Monday - Saturday**

*We carry a full range of canned beer,  
wines and spirits, for your convenience  
and our prices are sharp.*

**Cans from \$10.90 a dozen**  
**Bulk spirits from \$8.95 a litre**

**by Boat or by Car, you know where we are**

## ROTOITI LAKE CRUISES

### M.V. HINEKURA



Your hosts, Ted & Gael Boucher  
Operating from Okawa Bay Lake Resort

- \* **Fishing (our speciality)**
- \* **Scenic Charters**
- \* **Barbecues**
- \* **Picnics**
- \* **Hot Pool Bathing and Evening Trips**

*Departs Okawa Bay Resort  
and other sites by arrangement*

**Business Phone (07) 362 4599 Home Phone (07) 362 4815**

**c/- P.O. OKERE FALLS, ROTORUA, N.Z.**





**POLICE**  
Nga Pirihimana O Aotearoa

**BLUEPRINT**

Burglaries and thefts of property from vehicles in your area are continuing as usual. Whilst most of the thefts have been from visitor's cars, there is an overall need to become more security conscious. It is not always possible to secure your property adequately, but using any deterrent measures is a help. Some incidents which have occurred recently include:

- \*burglary of an Okere Falls home where a television, key board and midi system were taken..
- \*theft of a full petrol tank from a boat at Okere Falls..
- \*theft of a boat (recovered) from a Reserve at Okere Falls..
- \*several thefts from vehicles at boatramps, Okere Falls carpark, and Trout Pool Reserve carpark..

In one case, the police apprehended three offenders for theft from a vehicle because they had been seen and the informant responded quickly. It is a good feeling when the public responds like that. At Otaramarae, a call from a resident that a suspicious furniture removal truck was parked at a neighbours holiday home turned out to be legitimate after it was established that the owner was on his way to Auckland from Gisborne and decided to stay the night. These jobs are also satisfying to deal with as its better to know that nobody has been victimised.

Houses up Whangamoa Drive are beginning to become targets for burglaries so take extra care in that area. Report any suspicious activity and vehicles ASAP. At Mourea, there have been reports of early morning activity with noisy vehicles and stereos in the Hamurana Road area. A boat was stolen from the motor camp and later recovered minus its two outboard motors and we would appreciate any information concerning that. As the warmer weather has approached, children have been gathering in the vicinity of the motor camp to swim. Some have been behaving offensively by pulling down their shorts and swearing at members of the public. **PARENTS, this behaviour will not be tolerated.**

The cannabis growing season is well under way. No doubt we will be receiving bits of valuable information which could see us visiting parts of Mourea, Okere Falls and Otaramarae without warning. And of course the silly season is here too. This means the end of another busy year and time to look forward. So, from all the team at Te Ngae, do have a safe and merry Xmas and a happy New Year!

**GEORGE ANARU - Community Constable**

## Mobile Library Calendar

### Tuesday Route 1998/99

10.15 - 10.35am	Rotoiti Store
10.40 - 11.00am	Te Kura o Rotoiti
11.15 - 11.35am	Rotoma School
11.40 - 12 noon	Merge Lodge, Rotoma
1.00 - 1.30pm	Okere Falls/School
1.45 - 2.30pm	Hamurana Store
3.00 - 3.20pm	Mamaku School
3.25 - 3.45pm	Mamaku Store

The Mobile Library carries a good selection of

- \* Adult and Childrens
- \* Fiction
- \* Non-fiction
- \* Large print
- \* Magazines
- \* Talking books
- \* New Zealand Fiction & Non-fiction
- \* Music Cassettes and C.D.'s
- \* Videos

Special requests can be made for specific items.

## NEWS AND VIEWS

Forestry operations have commenced in the Mourea area. The Paehinahina Mourea Block above Okawa Bay will shortly be logged with trucks exiting from an entrance about 50 metres in from the Okawa Bay Road/SH33 intersection. Thinning is currently underway in the Kuharua Ruahine Block on the western side of SH33 between Parcliffe and Takinga Street. Trucks will be exiting through Pikiaro Rugby League Club onto Takinga Street. Extreme care should be taken in the vicinity of both areas.

oooooooooooooooooooooooooooo

The SH33 shape correction and sight improvements from Whangamarino School to Taheke Road intersection are due to commence this month. No work is to be carried out on the Okere bend section during January to minimise disruption. Various improvements to the Draft Plans have been made by the overseers, Sigma Consultants following several meetings on site with iwi, residents and committee members. Of major significance will be the widening of the road in the vicinity of the Store and installation of a flush median strip and additional parking area.

The Manupirua Hot Pools committee and caretaker would like to welcome visitors to this wonderful facility. With the busy summer season almost upon us, They would very much appreciate consideration being shown by boat owners when tying up at the jetties. With numbers increasing over this period, there will be a premium on space, so please make extra efforts to utilise as little area as possible in the interests of all users.

oooooooooooooooooooooooooooo

September saw the implementation of the long awaited upgrading of street lights around Rotoiti. We were privileged to be the first recipients in the District and many a hitherto darkened corner came to light literally. The visual and aesthetic improvements for those residing along most local roads and highways, not to mention the added night-time security, has been much appreciated. This was a jointly funded exercise by the Rotorua District Council and Rotorua Energy Charitable Trust as part of a five year programme schedule to upgrade or extend streetlights throughout the rural areas of the District.

## FOR EVERYTHING YOU NEED IN BUILDING & HARDWARE

- TIMBER
- HARDWARE
- BATTS
- NAILS
- BOLTS
- SAND
- CEMENT
- BUILDERS MIX
- UNDERFLOOR INSULATION

- HARDIES PRODUCTS
- PANEL PRODUCTS
- GIB BOARD
- WEATHERBOARDS
- TIMBER PANELLING
- FASCIAS
- DECKING
- GARDEN CENTRE
- PREHUNG DOORS

- MOULDINGS
- PRENAILS
- TRUSSES
- FENCING
- SEALANTS
- CLEARS
- CEDAR
- STEPS
- TOOLS

OPEN  
EVERYDAY  
OVER THE  
HOLIDAYS  
EXCEPT  
CHRISTMAS  
DAY

HOURS:  
Mon-Fri:  
7.00am to 5.00pm  
Saturday:  
8.00am to 4.00pm  
Sunday:  
9.00 am to 3.00pm

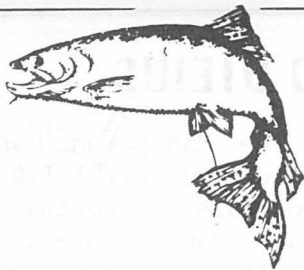
# PlaceMakers

## WE'VE GOT IT ALL TOGETHER

*Te Ngae Road, Rotorua*  
*Phone 07 - 345 6892*

Pleased  
to be the  
Major  
Sponsor  
of the  
Lake Rotoiti  
Ratepayers  
& Residents  
Association.

## ANGLERS' CORNER



## Maureen Doherty

Tarawera scored best of the lakes with 17 prize winning fish. Other prize winning figures were Okataina (8), Rotoiti (6), and Rotorua (2). The contest is limited to 550 anglers.

**Opening Day - Ohau Channel.** By 8.30pm the night before, the first good keen blokes had established their possies. A long night's vigil followed with deck chairs, thermos flasks and the stronger stuff at hand. By midnight, the best spots had all been taken and if you left things until 4.00am or thereabouts then only the uninviting, snag-ridden and willow-hidden spots were left. At 1.00am a cold strong wind roared in from the lake, ruining the mild night that had been. At 4.45am the camp management brought the traditional rum and coffee around and at 5.00am shot off the opening day gun causing the mallards and pukekos to squawk in protest.

This year, I slept in until 3.00am. My son and his mate had kept me a possie after being up all night fortified by the odd rum and coke and were pleased they'd secured the same spot on the bank as last year.

The excitement never lessens...those few minutes ticking by prior to the 5.00am gun blast are perpetually tense. Standing there in the pre-dawn dark, gear finally checked, mentally visualising that first angle of cast, wetting the fly, muscles tensed...My first few casts were short - along the deep bank edge. On my third cast I had a good hit. Two casts later my rod arched. I was into a good fish. It turned out to be a 3.88kg brown hen in superb condition. The time was 5.15am and I was well satisfied.

19 year-old Bevan Pulham was fishing directly downstream from me. About 5.30am, I heard some frantic splashing and he eventually netted a 5.28kg brown hen which I believe was the largest opening day fish landed in the District.

**The 32nd Rotorua International Trout Fishing Contest** was held in mid-November. 440 fish were weighed in at an average of 2.1kg. Probably twice this number were taken as anglers tend to only weigh in fish over 2kg. The top prize was won by Auckland angler Alan Stamp whose 5.416kg (11lb 10oz) rainbow was caught deep trolling on Lake Tarawera. Lake

**1998 Liberations.** On 28 August, Eastern Region Fish and Game liberated 3,000 rainbow trout at Ruato Bay/Pipe/Quarry. A further 500 were released at Ruato on 11 September. During winter, 500 rainbow were liberated at Ruato on 28 May, and on 17 June, 11,500 were given their freedom spread over all sites - a total of 15,500 liberated in Rotoiti this year.

**ERFGC Surveys on Lake Rotoiti.** A summer survey of boat anglers was taken on the lake with 162 interviews resulting in:

average fish length: 507mm

average weight: 1.79kg

average catch rate per hour: 0.14

fish catch per angler: 0.41

A similar opening day survey saw 182 anglers interviewed with 156 fish being measured resulting in:

heaviest fish: 2.63kg

fish catch per hour: 0.15



## ROTOITI RESTAURANT

Dine in the warm relaxing atmosphere of our lake side Restaurant and order from the new Winter a la carte menu

OR

Try our 3 Course Table D' Hote Menu

**\$35** incl GST per person

For Reservations Phone 362 4599



## Anglers Corner - Continued

**Hesitation in the Dark.** I was fishing the Ohau Channel entrance (Lake Rotorua) the other night when I hooked a large piece of water weed. I reeled in and held it up against the starlight to free my hook when...something made me hesitate ...a memory surfaced from another time, another lake. I flicked on my torch and revealed a really large koura (freshwater crayfish) with my grey ghost (yes, I do use smelt flies after dark) firmly embedded in its nipper!!

**The Browns.** I have enormous respect for the brown trout and according to many local experts they are making a real comeback. Double figure browns are caught every year in the Ohau Channel and frequently at the Delta. The brown trout population has made a slow recovery after their ruthless extermination from 1950-1970. Thousands upon thousands were culled from traps in their principal spawning stream, the Ngongotaha, by the then Wildlife Service, turned into fish-meal and fed to young hatchery rainbow! It was deemed that this policy would greatly enhance the rainbow fishery and that brown trout were too elusive for tourists to hook. No proper research was carried out before or after, and it is now known that brown and rainbow trout co-habit well since their feeding habits are quite different from each other.

**'Fishing is one of the few pursuits known to man where it can still be fun even when you fail'**

Go fishing friend!  
Soft casts and tight lines.

**Foam, Foam and still more Foam.** Yes it's still happening. It is formed in Lake Rotorua, is activated by the Ohau Channel weir, flows into Lake Rotoiti, down the Okere Arm and is seen down the Kaituna River past Paengaroa. The Institute of Environmental Science & Research Ltd (ESR) in Wellington have been assisting in scientific testing of foam and water samples and advise that the source is definitely micro-algae (a microscopic water plant). However, as yet they have been unable to determine the specific species or what, if any. contributory factors may be causing it to suddenly become so super-abundant.

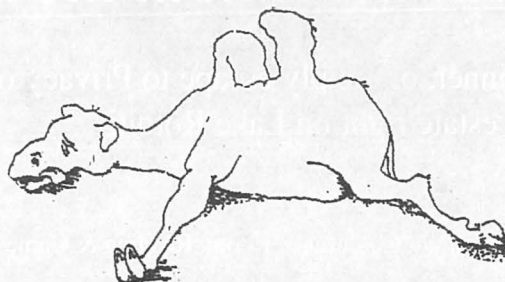
It comes and goes depending very much on weather conditions. Three totally different site reports can occur over a 12 hour period. To tourists and visitors it is often seen as pollution. Indeed, many local people believe that there are sources from which pollution is entering Lake Rotorua and assisting in the breakdown of the foam producing algae.

There have been reports of newly hatched water fowl suffocating in it as mothers happily paddle in backwaters. Smelt are unable to surface feed as readily, and backwaters (where it often stays like an ice-flow for days) must suffer ecological effects from lack of sunlight.

In latest tests, the Cawthron Institute is comparing algae species taken this year with those from former years. Whatever the causes of this prolonged outbreak, we have been assured that every effort is being made to identify and isolate the culprit.

## **ROTORUA Farm & Industrial Pumping**

**DON'T LET  
YOURSELF  
RUN DRY**



**32 White Street  
P.O. Box 1176  
Ph (07) 347 8552  
A/H 332 3366**

**Total Water Pump Sales & Service**

# LAKE ROUNDABOUT

Lake levels, as always, are a touchy subject in Rotoiti. However, despite the convictions of some, it is our view that since the variation of Environment BOP's consent conditions, agreed to in December 1996 after some lengthy consultation with public submitters, the overall management of Rotoiti levels has improved markedly.

This is in no small part due to the close liaison maintained by our resolute committee guardian, Michael Gill, and EBOP engineers who control lake levels. For the information of residents, Michael has, since 1996, kept a daily log of readings from his own gauge in Okawa Bay (this gauge having been synchronised with official data) which are checked frequently with both the telemetering station at Okere, from where official readings are taken, and also with the static gauge installed at Hinehopu some years ago. Any variations are usually conveyed to EBOP, who have been able to develop a formula which allows for the differences occurring at the Okere tower caused by the drawdown effect depending on the size of the Control Gate openings.

Notwithstanding, there is no doubt that genuine problems still exist from time to time. Once again, it needs to be acknowledged that in attempting to maintain a 'target level' within a very narrow range

for a water body such as Rotoiti, there will be occasions when it is virtually impossible to achieve full satisfaction. This is due to a number of factors, not least of which may be false weather predictions acted upon in good faith. Severe weather events like the July flooding will almost inevitably see the target levels compromised.

Significantly, the flood levels experienced in July and August of this year, despite record rainfall, saw the lake rise to a maximum level of RL279.405 metres (target level is RL279.15 metres). This compares to the level of RL279.805 metres reached in 1962. The difference of 400mm had a large bearing on the relatively few lakeside properties that reported problems with flooding. This was attributable to the Control Gates being opened to their maximum (under the new consent conditions) of three gates at 2,000mm. They remained fully open for a period of 45 days (12 July to 25 August) due to the huge volume of water coming out of Lake Rotorua during this time. With the flood protection scheme in operation further down the Kaituna River, very little flooding was reported although there have been some accounts of problems experienced closer to the river mouth.

## Moose Lodge

& Golf Resort

### *Exclusive Hideaway without the high costs!*

Golf Packages, Conferences, Dinner, or simply escape to Privacy on the exclusive 100 acre estate right on Lake Rotoiti

#### Facilities:

Golf Course, Tennis Court, Mineral Baths, Restaurant, Conference Room, Reading & Games Rooms, Kayaks, Volleyball, Helipad, Jetty.

SH30 RD4 Lake Rotoiti, PO Box 7181 Rotorua, NZ.

Tel: (07) 362-7823; Fax: (07) 362-7677; Website: [mooselodge.co.nz](http://mooselodge.co.nz); Email: [moose.lodge@xtra.co.nz](mailto:moose.lodge@xtra.co.nz)

## LAKE ROUNDABOUT - Continued

One of the acknowledged deficiencies within the present management regime is the inability to obtain completely accurate readings from the Okere Monitoring Station due to its proximity to the Control Gates and the influence of draw-down caused by the flow of water through the gates. During and following the floods, weed and debris collected on the safety wire and drums situated just above the Control Gates generating a 'ponding' effect and further aggravating the problem of producing true recordings, to the extent that EBOP engineers found it necessary to confirm readings with those taken locally. Because of the need to keep the gates fully open for an extended period, Lakes Inspectorate staff were unable to clear the debris from the wire for reasons of personal safety.

Quite clearly, there is a strong case for a monitoring station to be installed at a location that will allow readings to be unaffected by extraneous events. There is also a belief that semi-automation of the Control Gates is required to enable EBOP staff to make immediate adjustments (full automation would probably be too inflexible, eg an inability to react to anticipated weather patterns).

Such issues have already been communicated to EBOP and will be debated during the upcoming review in the new year following release of a full operational report which was due by 30 November 1998. In the meantime, any concerns should continue to be reported to EBOP staff.

By the time this Newsletter goes to press, this year's lakeweed spraying programme should be complete. With the Land Information NZ office in Rotorua having closed during the year, we had renewed concerns over future continuity and satisfactory control mechanisms being maintained. This has been allayed by the letting of a 12 month contract to former LINZ employee Alan Matthews, now acting as accredited agent.

Funding levels have by all accounts been sustained and the spray programme for Rotoiti recently outlined in a letter from Alan Matthews encompasses a large number of areas identified in consultation with NIWA and local residents and will cover a total of 22.25 hectares. We are confident that the continued watchdog role of the Association in conjunction with the Lakeweed Society and residents will assist in the future sustainability of the programme.

### MOUREA HAPPY ANGLER STORE

\* CONED ICE CREAM \*

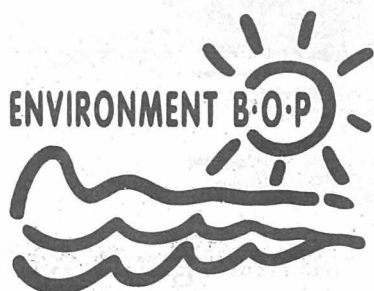
\* VIDEO FOR HIRE \*

\* GROCERIES \* MAGAZINES \*

Fresh Bread - Hardware

Fishing Licences - Lures & Flies

Phone 362 4709



**Bay of Plenty Regional Council**  
Quay Street, P O Box 364  
Whakatane, New Zealand

Telephone (07) 307 2545  
Outside Whakatane District but within  
BOP - Call free on 0800 ENV BOP  
0800 368 267  
Facsimile (07) 307 2544  
International Dialling Code (0064 7)

POLLUTION HOTLINE 0800 73 83 93

### TE NGAE PHYSIOTHERAPY

Mary Bradley & Laurice Smith



- Manipulative Therapy
- Sports Injuries
- Acupuncture
- Feldenkrais

8am - 6pm 5b Owhata Road ROTORUA  
Wheel Chair Access Off Road Parking

ph/fax 0-7-345 6915



# West Rotoiti Fire Force News

The unit has now had 42 call outs this year, our busiest year on record. Indications were that there was to be an early drought but this was averted with the recent heavy rains. However, a windy summer is likely and ground conditions will quickly dry out and vegetation will again become very flammable.

Our AGM was held in October with a reunion to mark 15 years of operation. Both were graced with an excellent turnout and were very enjoyable occasions. West Rotoiti sent two wajax pump (forestry equipment) teams to a pumping competition hosted by the Ngongotaha Fire Brigade. While we didn't win any trophies, it was nevertheless a successful day, providing a good opportunity to put training into practice and to mix with volunteers from other units. We are still working into our new relationship with the Fire Service but it looks promising at this stage. Options are being considered for the replacement of our 1972 Ford Fire Engine.

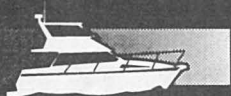
Remember to check the batteries in your smoke alarms and check the servicing requirements on fire extinguishers. If you haven't got extinguishers or smoke alarms then you should think about getting some to provide for better safety. Don't forget to fit an extinguisher in your car. Also, remember that chimneys need annual cleaning - why not get it done before next winter. Taking some basic safety precautions may save the life of your family or friends.

If planning a rubbish fire contact the **FIRE SERVICE** IN Biak Street for a permit, not Castlecorp who used to issue permits. All fires other than those in enclosed incinerators or barbecues require a permit. Permits will not be issued if a complete fire ban is in place. If you have any queries about the unit, please contact: Willie Shaw (362-4315), Noel Ruebe (362-4814), Ted Boucher (362-4815) or Dan Arrowsmith (362-4477).

Annual subscriptions (\$10) can be sent to our Treasurer, Judy Smith (8 Foster Road, RD4 Rotorua). Any donations are always appreciated. A garage sale is planned for February. Contact Keith Smith (362-4178) or Keith Wyatt (362-4639) if you have any surplus goods you wish to donate.

**REMEMBER! IN AN EMERGENCY RING 111.**

MV *Mere*  
LAKE ROTOITI



**"Come and enjoy the unspoilt beauty of one of nature's gems with us..."**

We would be privileged to include you in the following:

Hot Pool Cruises  
Champagne & Twilight Cruises  
Authentic Maori Marae Hangi  
Barbeques  
Trout fishing, in season, all tackle supplied  
Fishing Licenses for sale  
Alcoholic & Non Alcoholic refreshments available for purchase on board

Contact Bruce & Margaret Gee,  
15 Ngareta Rd, Lake Rotoiti, phone 07 3624448 or phone the skipper, 025 2892908

# NEWS AND VIEWS

**HEART ATTACK?** A heart defibrillator is now based in the West Rotoiti area, on the Pikiaro Hauora (Health Unit) bus. It has been sponsored by Rotary and Rotorua Energy Charitable Trust. If faced with a possible heart attack, first **DIAL 111 and ask for an AMBULANCE.** Only then should you seek to access the use of the heart defibrillator by calling June Waaka (Tel 362-4211 or Mobile 025-593568)

.....

**Jim and Mary Stanton**, long standing Chairman and Secretary of the Association were earlier this year honoured with Rotorua District Community Awards in recognition of outstanding services to the Rotorua community. The recommendation was made by the Combined Lakes Ratepayers Association with recipients chosen by Mayor Grahame Hall.

Jim has been Chairman for 6 years and Mary is in her 10th year as Secretary. On behalf of Rotoiti residents, the Committee wishes to offer their heartiest congratulations to both Jim and Mary in acknowledging these well deserved awards.

.....

Don't forget our **Annual General Meeting** to be held again at the Pikiaro Rugby League Clubrooms in Takinga Street, Mourea on Sunday, 10 January 1999 at 10.00am. As usual we have invited our MP Max Bradford, Mayor Grahame Hall, North Ward District Councillors, and Rotorua Regional Councillors. Most of all we welcome our local members and residents to come along and express any views and concerns that may be held regarding the future of the District and the community.

We would particularly like to encourage those who might have the capacity and inclination to serve on the committee, especially if you reside in the east Rotoiti area from say Hauparu Bay to Hinehopu. Whilst we are always willing to assist in trying to resolve concerns from any part of the lake, we can only act upon those brought to our attention. A general lack of representation from Eastern parts over the years has seen few issues involving that area. **WANTED! Representatives from East Rotoiti.**

## Payne Enterprises Ltd.

**MAN LIFTER 8.5m LIFT**

- \* WATER BLASTING
- \* TREE-TOPPING
- \* WINDOW CLEANING
- \* PAINTING
- \* BUILDING MAINTENANCE

Phone 362 4445 MOBILE 025 824 931 BRIAN OR CHRIS

## OKAWA BOBCAT & TRUCK SERVICES

EXCAVATIONS, RUBBISH REMOVAL, TOPSOIL, FILL

**PROMPT SERVICE**

Phone 362 4445 MOBILE 025 824-931 BRIAN

## JUSTICE OF THE PEACE & MARRIAGE CELEBRANT

**Lindsay Brighthouse**

### Residential

110 Te Akau Road  
Okere Falls  
Rotorua

### Postal

C/- Okere Falls P.O.  
Rotorua

**PHONE: (07) 362-4876**

**CELLPHONE: 025 849-158**

## FOR POSITIVE REAL ESTATE RESULTS

**Buying or Selling**

**Betty Stewart**  
Lakes Specialist



Phone (07) 345 3700  
Fax (07) 345 3703  
A/H (07) 345 9162  
Mobile (025) 997 711



**The Professionals**

**McDowell**  
**Real Estate Ltd**  
M.R.E.I.N.Z.

Cnr Te Ngae & Tarawera Roads  
P.O. Box 1134  
Rotorua, DX JP30011

# 1998 COMMITTEE

## CHAIRMAN

## DEPUTY CHAIRMAN

## SECRETARY

## TREASURER

## COMMITTEE

Jim Stanton

Lindsay Brighthouse

Mary Stanton

Michael Gill

Theo de Lange

Maureen Doherty

Bill Kingi

Gillian Marks

Nick Miller

Tai Eru Morehu

Fred Whata

Hapi Winiata

Okawa Bay, Mourea

Te Akau Road

Okawa Bay, Mourea

Okawa Bay, Mourea

Otaramarae

Hamurana Road

Parcliffe

Te Akau Road

Te Akau Road

Maniatutu Road

Okere Falls

Rotoiti East

Ph 362-4690

Ph 362-4876

Ph 362-4690

Ph 362-4589

Ph 362-4342

Ph 362-4866

Ph 345-7186

Ph 362-4804

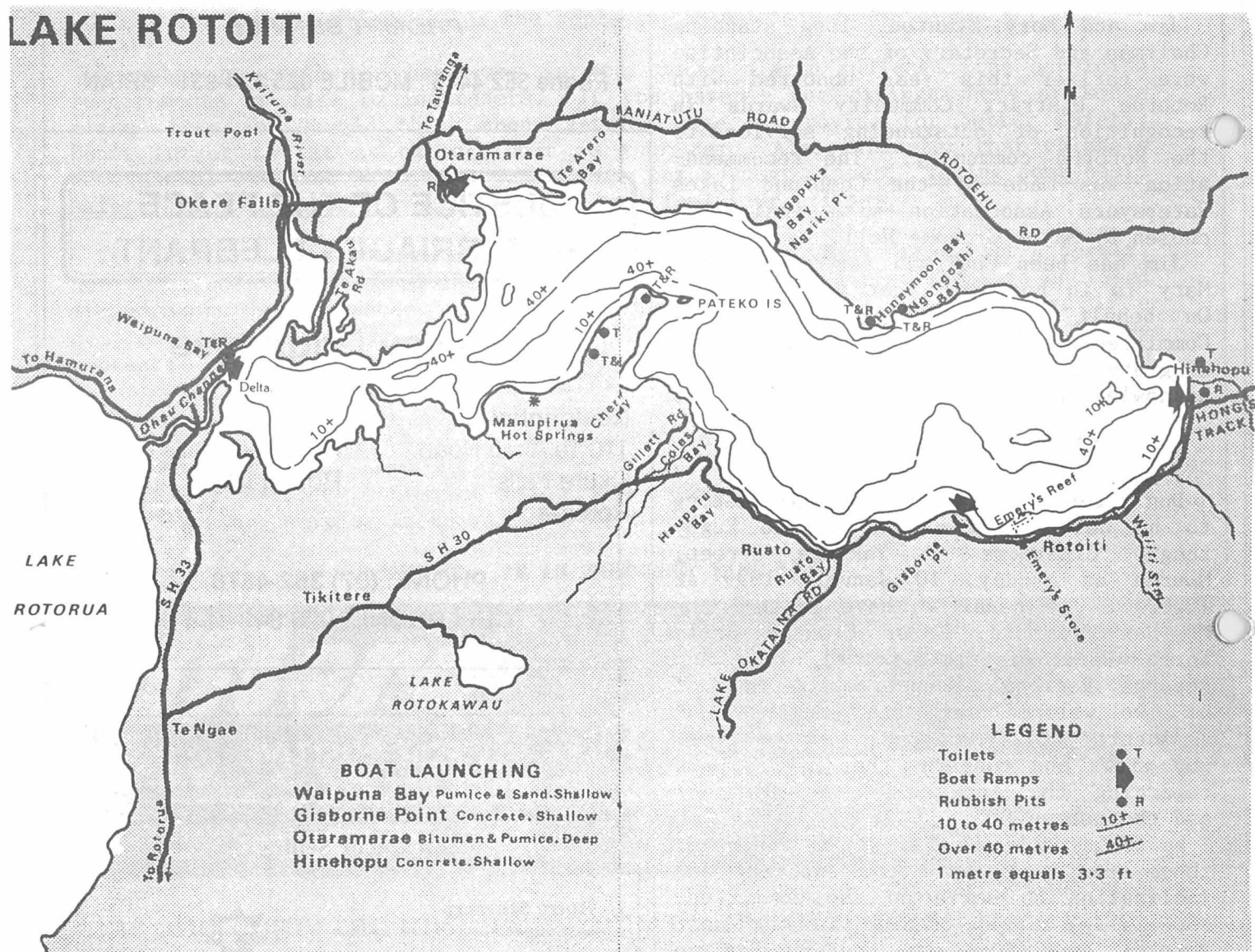
Ph 362-4747

Ph 362-4392

Ph 382-4842

Ph 348-7783

## LAKE ROTOITI



## IMPORTANT & USEFUL PHONE NUMBERS

**Fire, Police, Ambulance, Search and Rescue** 111

**Accident and Emergency medical care centre** 348 1000

**Urgent Pharmacy** 348 4385

**ROTORUA HOSPITAL** 348 1199

**Poison Information** (03) 474 7000

## USEFUL INFORMATION

**Dog control - Rotorua District Council** 348 4199

**Environmental pollution hotline** 0800 738 393

**Lakes Inspector Dave Pilkington** 348 4199

**SPCA** 349 2955

**Police Station Te Ngae** 345 3453

**TrustPower emergency number** 347 5102

*Rubbish bags are collected on Monday mornings*