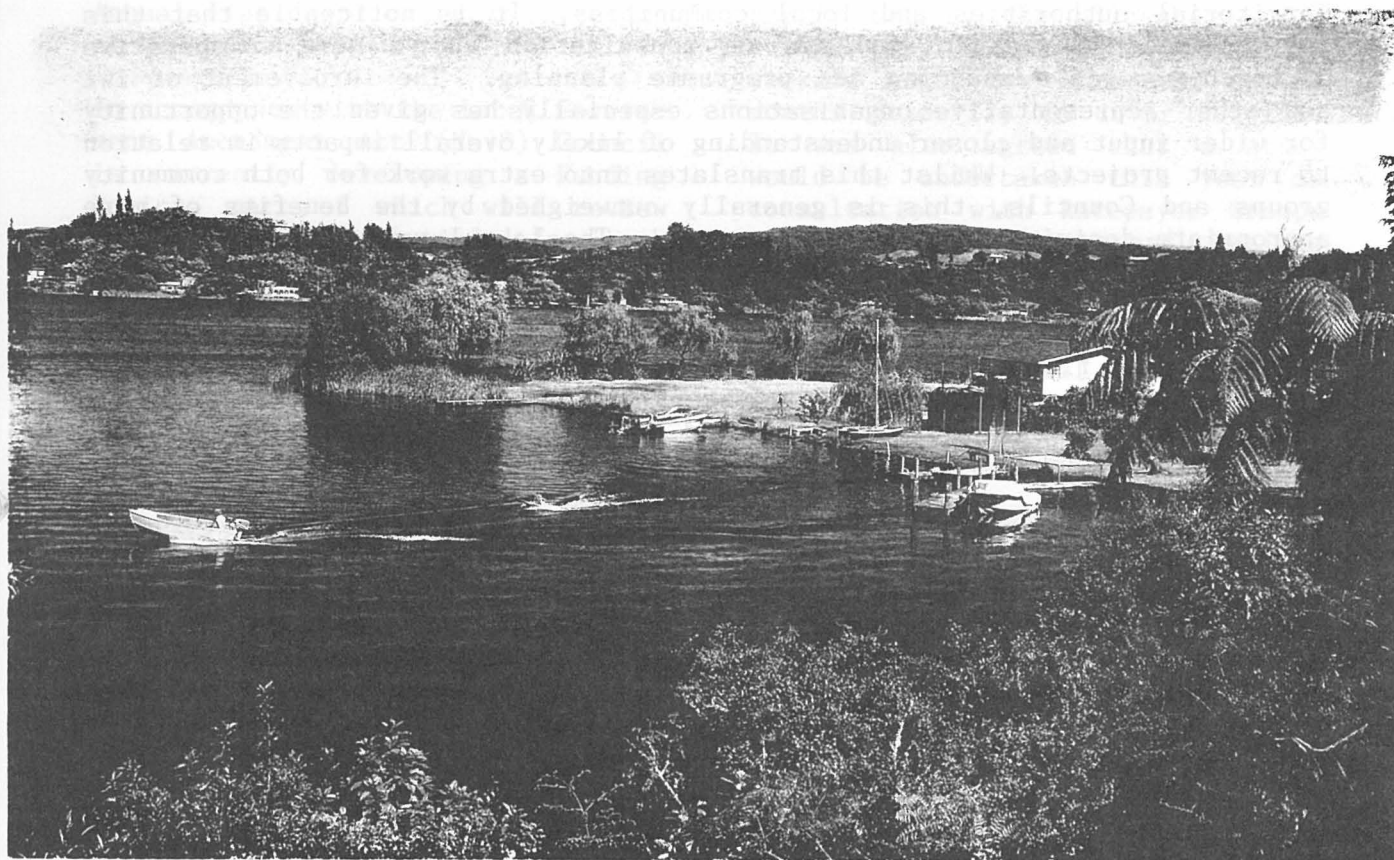


Lake Rotoiti Ratepayers & Residents Association



Kia Ora

Greetings from the Lake

With the end of another year fast approaching, it is time to provide an update on activities and occurrences since our June Newsletter. As Local Government bodies continue to take on greater responsibilities the result is closer consultation with communities and individuals. This reflects a growing awareness of how co-ordinated efforts can develop and expand initiatives.

Our pro-active participation in this arena, whilst creating extra workloads, means that we remain to the forefront in our aim to represent the interests and aspirations of all who live within the Lake Rotoiti catchment along with those who visit the area for recreation and pleasure. There is a growing need to ensure that an ecological balance is maintained in the face of ever increasing pressures on the lakes and their environs. It is essential that community organisations such as ourselves continue to seek appropriate decisions and solutions in meeting the demands of progress whilst promoting fundamental improvements to our own quality of life.

Again, we extend thanks to our sponsors and advertisers along with the many of you who subscribed to the Association. Your ongoing support will enhance our ability to pursue the many issues of importance which affect our localities. We trust that you find this Newsletter of interest and wish each and everyone of you a very merry Christmas and prosperous New Year.

Chairman:
Jim Stanton
Tel: 362 4690

Secretary:
Mary Stanton
Tel: 362 4690

All Mail: PO Mourea
c/- Happy Angler Store
Rotorua

Fax: 362 4589

FROM THE CHAIRMAN

Another busy year for the Association is almost at an end. Over the past few years, Central Government has devolved more activities to Regional and Territorial authorities and local communities. It is noticeable that this has produced a greater emphasis on consultation and a more co-operative approach towards resourcing and programme planning. The involvement of iwi and other representative organisations especially has given the opportunity for wider input and closer understanding of likely overall impacts in relation to recent projects. Whilst this translates into extra work for both community groups and Councils, this is generally outweighed by the benefits of more appropriate decisions and mutual outcomes. The Lake Levels Review and Rural Reserves Management Plan are good examples of this process at work. Although the devolution currently taking place gives communities more autonomy in making decisions, it also creates additional financial burdens, particularly in the social field, which seem to be more rightly a taxpayer rather than a ratepayer responsibility. The voluntary and involuntary contributions of community groups and individuals should not be unduly compromised by a lack of financial support from Government agencies in these circumstances.

One issue that has not progressed to our satisfaction is the development of the Lakes Management Strategy. All Lakes Ratepayer groups have identified this as the singularly most important issue facing the District at present due to the perceived inadequacies of the Rotorua District Plan. Targeted for completion by June 1998, it now seems certain that this deadline will not be met. This is primarily due to the political steering group comprising Environment BOP, Te Arawa Trust Board, and Rotorua District Council having been unable to reach common agreement on the objectives and goals for the Rotorua lakes. The question of lakes ownership is believed to be at the forefront of these difficulties. There is considerable support for Te Arawa to be officially recognised as owners of the lakes and such claim is currently with the Waitangi Tribunal. It is equally expedient, in the interim at least, to proceed with some haste towards a joint strategy which could form the basis of future regimes for the specific development and protection of the lakes catchment areas. We are extremely hopeful that this can be achieved in the shorter rather than the longer term.

It will be recalled from the last Newsletter that Tarawera and Okareka Ratepayer groups had lodged an appeal with the Environment Court over the consents granted to Arbridge Developments to build a large hotel resort on Crater Lake farm between the two communities. These plans have now been abandoned by the developers due to delays in exercising the consents and the withdrawal of key backers. Whilst there will be varying views on the outcome, it was significant in that the Court decision not to impose (substantial) security costs on the appellants in bringing the action will be seen as beneficial to any public interest groups who feel compelled to embark on such cases.

We can feel reasonably satisfied with our efforts to bring to the attention of District and Regional Councils a number of important issues confronting our community over the course of the year, particularly through the Annual Plan process. Whilst not all requests achieve immediate results, funding has been allocated for an additional lakes inspector, navigation lights study, road safety improvements and commencement of the street lighting and footpathing programme. We are confident that, with the continuing support of members, other positive outcomes will be achieved in due course.

Jim Stanton

ROTORUA DISTRICT COUNCIL - ANNUAL PLAN

In the previous issue we outlined our submissions to RDC's Draft Annual Plan. Following is a resume of Council's response.

In accordance with the Local Government Amendment Act (No.3) Council is currently developing a Funding Policy, part of which will review the rating differentials for each demographic group. The Draft will be open to public consultation and the Plan will be subject to further frequent review upon implementation.

Although Council acknowledge that staff changes have affected the progression of the lakes Management Strategy, they state that the main hold-up has been due to 'getting the basis of the process and the relationships between the main players established on sound and workable footings'. They advised that they were now in a position to identify community participants in the next stage of forming the Rotorua Lakes Liaison Group. Four months later this has still to be finalised.

Council believe that the timeframe for the Mourea Water Supply should stand as historically, obtaining community agreement has taken considerably longer than anticipated and physical works will not be able to commence until this is completed.

Our request for additional staffing to the Lakes Inspectorate has been partly met by the allocation of a further \$15,000 to employ part-time weekend staff over the busy summer months primarily to cover Rotoiti. It was also agreed that a study would be undertaken this year in consultation with Ratepayer Groups to identify priorities and costings for Lake navigational lighting.

The programme to upgrade rural street lighting will commence this year in the Rotoiti/Rotoma area and will be completed next year ahead of other areas around the District.

Design work on improving the Trout Pool Road Reserve will commence this year providing agreements can be reached with commercial rafting companies for use of the area. The Whakakopa Reserve playground will be prioritised for upgrading along with other such facilities.

The Okere Falls jetty is currently certified as being safe but will be programmed for replacement within the next 3 years.

A feasibility study on prevention of crime at tourist attractions is underway. In the meantime, Tourist Watch has secured further funding to continue its surveillance role.

ROTOITI LAKE CRUISES

M.V. HINEKURA



Your hosts, Ted & Gael Boucher
Operating from Okawa Bay Lake Resort

- * **Fishing (our speciality)**
- * **Scenic Charters**
- * **Barbecues**
- * **Picnics**
- * **Hot Pool Bathing and Evening Trips**

*Departs Okawa Bay Resort
and other sites by arrangement*

Business Phone (07) 362 4599 Home Phone (07) 362 4815

c/- P.O. OKERE FALLS, ROTORUA, N.Z.

LAKE INSPECTORS REPORT *Dave Pilkington*

Inspectors for Lake Rotoiti

Council has appointed Alan Hartfield as a part time Lakes Inspector to operate mainly on Lake Rotoiti during weekends and statutory holidays. Depending on length of days worked, we should have his services for three months to cover the busy holiday season. Alan has been involved with Council as a Lakes Inspector for a while and is familiar with all the District Lakes. It is proposed that he commence duties mid-December working through to mid-February.

Honorary Inspectors able to be contacted are:

Alan Hartfield	Rotorua	Phone	(025) 748 753
	Boat - "Impulse"	VHF Call Sign	ZMR4838
Daryl Ross	Okawa Bay	Phone	362 4401
Alan McLean	Gisborne Point	Phone	362 7606
Taku Hohepa	Rotoiti East	Phone	362 7124
Roger Thomas	Rotoiti East	Phone	362 7288

Alternatively contact Rotorua District Council Ph 348 4199 or AH 348 4195.

Lake Rotoiti Residents and the 5 Knot Rule

We seek the co-operation of Rotoiti residents in observing the 5 knot rule. Some residents have been reported from time to time departing in haste from jetties belonging to lakeside properties. Where possible, those responsible have been made aware of our concerns. In some cases, people spoken to have been from properties they are renting or being hosted at.

In the main, Lakes Inspectors are speaking to visitors to Rotorua lakes who profess to be ignorant about safe boat handling and/or navigation rules. It is considered that lakeside residents and local boaties have a responsibility to observe maritime regulations and set an example for visitors and novices to follow. Generally, boating behaviour amongst 'local' people is good. We would like to take this opportunity to remind those who sometimes 'forget'.

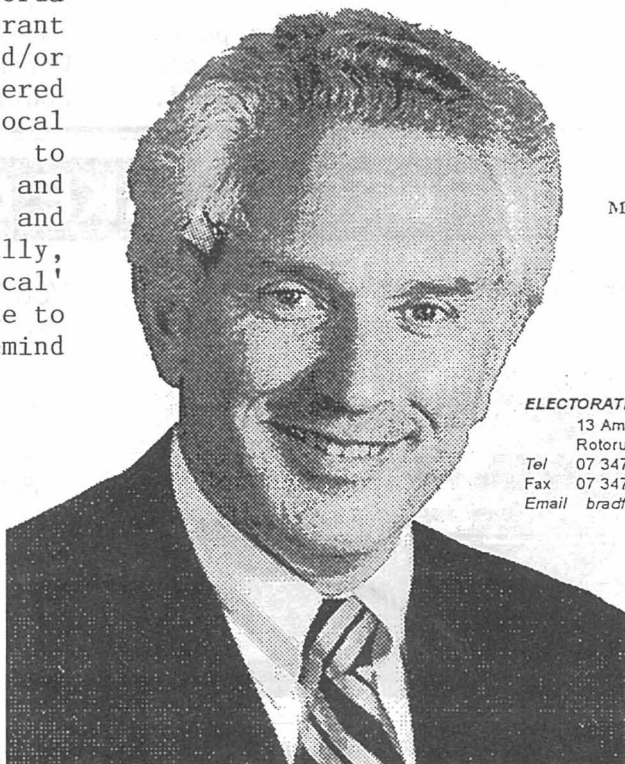
For educational material, please contact Dave Pilkington at District Council Phone (07)348 4199.
**SEASONS GREETINGS AND
SAFE BOATING!!!**

MAX BRADFORD

MP ROTORUA

*"Please do not hesitate
to contact me if you
have any
queries"*


Max Bradford MP



ELECTORATE OFFICE

13 Amohia Street
Rotorua

Tel 07 347 4444

Fax 07 347 4459

Email bradform@iconz.co.nz

RURAL RESERVES MANAGEMENT PLAN

The Draft of this Plan was publicly notified for submissions in June of this year following earlier presentations and community comment. We made submissions requesting several enhancements.

* that Local Purpose and Esplanade Reserves be included with a short account of their current status including any restricted access or usage.

* that Sections relating to General Access and Use, Leases and Licences, and Commercial Activities and Concessions be amended to clearly reflect discretion towards approvals and a commitment to consultation with affected community groups.

* that policies relating to the construction of boatramps, jetties, playgrounds and other major structures on Reserves also include an emphasis towards consultation.

Council recommendations to these submissions resulted in agreement to include all Council Reserves in the Plan. Some concessions were made towards consultation regarding structures but the contentious issue of leases and commercial activities remain solely at Council discretion. An amendment to the Management Plan for the Okawa Bay Reserve prompted our further response at the subsequent Statutory Hearing.

A submission by committee member and local resident, Michael Gill, asking whether clubrooms could be erected on the Reserve by the BOP Trailer Yacht Squadron without public consultation resulted in the Plan being amended to include the ability to do just that on the strength of a Council resolution passed without consultation in 1995.

Both Michael and this Committee strongly objected to the amendment on the basis that such provision would likely have a number of detrimental effects on both the Reserve and the adjacent community.

Whilst we are not unhappy with the present usage by the Yacht Squadron who have mostly been extremely co-operative and beneficial in terms of developing the Reserve for all users, the fact that it is a public Recreation Reserve serving a substantial residential area needs to be given paramount consideration.

We are pleased that, in view of these submissions, the Hearings Committee agreed that the amendment should be revoked.

Overall, Council will have produced a comprehensive and user friendly document once final amendments have been completed, upon which it will be presented for adoption and implementation.

THE MOST EXPERIENCED 'LAKE PROPERTY SPECIALISTS' IN THE DISTRICT

FOR EXPERT AND CARING REAL
ESTATE SERVICE ENQUIRE TODAY

LAKE ROTOITI
and Lakes Okareka, Tarawera,
Rotorua, Rotehu & Rotoma

Joan Piesse AREINZ Brian Piesse



Phone Office 0-7-348 5058
A/hrs 0-7-362 7755 (Ph/Fax)
Mobile 025 952 227

Cnr Hinemoa & Amohia Streets,
PO Box 77, Rotorua
DX No. JP30040;
Facsimile: 0-7-348 2381



Located on Highway 30, Tikitere, ROTORUA

Available for bookings. A one stop resort. End of year functions. Conference and seminar facilities. Hotel, motel, cabin and Backpacker accommodation. Licensed family restaurant and takeaway eatery. Yoga classes. Massage and facials. Pools and Spa baths. Outdoor adventure activities. Top Class riding centre and horse trekking. A great place for weddings and special occasions. Suitable for conference delegates, families and the travelling public.

Sport n' Spa Ltd.
Private Bag 3005, Rotorua
Telephone (07) 345 6799
or Freephone (0800) 749 742
Fax (07) 345 6791

MOUREA WATER PLAN

Following our application to Rotorua District Council earlier this year to investigate a water supply scheme for a defined area of Mourea, Kerslake and Partners Engineering Consultants were engaged to undertake a feasibility study to include preferred options and costing estimates. Subsequently, a report was presented to Council's Works Committee on 20 August outlining the results and recommending that they be communicated to the Association for feedback.

The study by Kerslake is based on information provided by Council and other outside sources. Although some contact had been made with landowners with regard to possible location of reservoirs, no negotiations had been made. The Report has analysed various options to comply with current standards which includes fire fighting capacity. Three source of supply options were finally considered, one from the existing Hamurana Springs source and two local bores.

- Supply from Hamurana source would be the Rewarewa Spring where water would be pumped along a 10 km rising main to a reservoir located on the northern hills which comprise part of the Waerenga/Pukahukiwi Blocks.
- Supply from a bore at Mission Bay would be from two production bores where water would be pumped along a 3.3 km rising main to a reservoir located on the northern hills. This bore site was selected on the basis of reports of fresh water flows into Lake Rotorua in the area.
- Supply from a bore at Okawa Bay would be from two production bores where water would be pumped along a 1000 m rising main to a reservoir located on the hills towards the south of Mourea. Evidence of good quality water being available from existing bores in the area, eg Okawa Bay Resort has prompted the selection of this site.

Reticulation in all cases would be by gravity feed from either reservoir site to properties within the supply scheme.

Cost estimates below provide for all investigation, design and construction work and include GST. Council's maximum subsidy for a community water supply scheme is 50 percent. Landowner contributions are based on a total of 143 properties in the scheme. The option to spread the contribution over 15 years assumes a cost of capital of 8.5 percent per annum. All water would be metered and charged as an annual rate to each property. The current average cost per household for similar schemes within the District is \$80 - \$120.

Cost Estimates

	Hamurana Source	Bore Mission Bay	Bore Okawa Bay
Investigation, Land purchase & Legal	\$29,250	\$74,250	\$74,250
Bores, Pumps and Reservoir	\$225,000	\$213,750	\$213,750
Pipework and Electrical Supply	\$591,860	\$408,375	\$348,075
Engineering and Contingencies	\$101,250	135,000	\$127,125
Cost of Scheme	\$947,360	\$831,375	\$763,200
Council Subsidy (50%)	\$473,680	\$415,688	\$381,600
Contribution per lot	\$3312.45	\$2906.90	\$2668.53
Annual cost per lot spread over 15 years	\$398.90	\$350.05	\$321.35

Following receipt of the Report, we carried out further investigations into the options through discussions with well drillers, the Consulting Engineers and the Public Health Department.

Those with extensive experience attested to the fickle nature of obtaining good water supplies from bores. Evidence suggests that bore supplies throughout the District are subject to various risk factors and marked variations exist even from adjacent bores. The better supplies in Mourea are in excess of 90 feet but most contain a certain degree of metal contamination, particularly iron and manganese. Problems with community bores relate to the sustained volume of water required to meet demand. Even extensive testing which may result in initial confirmation of satisfactory quality and quantity cannot guarantee long term integrity. We need to be mindful of the Okareka experience where, after two years, bacterial contamination has prompted discontinuation of the bore supply despite initial testing having provided excellent results.

By contrast, the established spring supplies in the District contain known factors and are generally considered to be of sustainable high quality and quantity. However, it is noted that concerns are held by conservationists and others over the increasing output from Rotorua spring sources for communal water supplies. Some believe that this may compromise the ecological balance of the fresh water streams flowing into the lakes and are seeking to have limitations imposed on the amount of water able to be taken. The two options available to Mourea from this source are either Hamurana Springs or the Eastern Supply which primarily services the area between Lynmore and Rotokawa. We are aware that the Eastern Supply is not considered to be a viable option as we understand that it is incapable of meeting demand flows without major upgrading.

In summarising the above, the most reliable option which virtually guarantees good quality water in required quantities is the Hamurana Spring option. This is also the most expensive. The other two options are based on the assumption that ground water from the bores will not require extensive treatment. There could be water quality and quantity risks associated with these. It has been recommended by the Consultants that the Okawa Bay Resort bore be investigated further to verify the accuracy of information currently to hand. If correct, it may provide the opportunity to supply the community from this existing bore with considerable cost savings. We are also aware that good flows have been obtained from a recently commissioned bore on the Waerenga Farm Block close to a proposed reservoir site. A bore in this location would also be expected to provide cost savings through the elimination of trunk mains. However, water from such elevated sources is understood to be at greater risk from bacterial contamination. An extensive on-site pumping trial would need to be undertaken before committing to any local bore option.

Having viewed the information to date, it is our opinion that, notwithstanding the higher capital costs, the option of linking with existing sources be favoured in the interests of long term integrity. Despite having reached that conclusion, there is an obvious concern over the present cost estimates. We have asked Council to make every effort to reduce these where practicable and provide indications of their accuracy for the next phase of consultation.

As previously advised a further public meeting will be arranged either in December or early in the New Year to debate the information provided to date. It is intended that this will enable any outstanding matters or concerns to be clarified and allow for a decision as to how the proposal should proceed.



POLICE
Nga Pirihimana O Aotearoa

BLUEPRINT

I went to an accident recently where a truck and trailer ran into and over the back of a car by Trout Pool Road intersection. The car was a mess and the two occupants were lucky to walk away. Remember, give these big rigs heaps of room. Trucks squash cars!

Most of you travel along Te Ngae Road daily which has become one of the country's so called Black Spot areas. Because of Rotorua's close proximity to other major centres, the road caters for commuters going both ways with traffic volumes varying throughout each day. There have been calls to make Te Ngae Road safer and that until this is done, drivers be re-educated. Whilst it may seem as though I am preaching to the converted, there are still those who exceed the speed limits including truckies. When turning, overtaking, or changing lanes use indicators at least three seconds beforehand. When turning left, pull to the left side of the road to allow other traffic to pass. When approaching merging traffic, be prepared to allow them into your lane ahead of you.

Slowing down long before pedestrian crossings if necessary helps to indicate to drivers behind you that you are going to stop. Create a greater stopping distance from the vehicle in front. Slow drivers must travel at a safer speed or pull over, particularly on the open road. Be prepared to take evasive action at all times. Attend a defensive driving course if necessary. Don't become a road-rager. Be patient and alert and sympathise with those who make mistakes. Serious incidents should be reported to the police.

At one stage I suggested that we should trial the use of headlights during the day along Te Ngae Road and beyond the junction, both ways, for about 20kms. Some drivers, especially truckies, are already doing it. Although it is not a legal requirement, perhaps we should all give it a go.

Reports of possible cannabis growers in your area have started landing on my desk. Keep it up! We will check these out. A report of kids 'begging' for money outside one of the shops at Mourea has also come to my attention. If the kids belong to you, do something about it! Burglaries have been occurring on holiday homes in Te Akau Road. We need more information on these and any other suspicious activity, as it happens, in your area.

For any free crime prevention advice, call the Te Ngae CPC on 345-3453. From all the staff, we hope you have a safe Xmas and New Year.

GEORGE ANARU - Community Constable

Mobile Library Calendar

Tuesday Route 1997/98

10.15 - 10.35am	Rotoiti Store
10.40 - 11.00am	Te Kura o Rotoiti
11.15 - 11.35am	Rotoma School
11.40 - 12 noon	Merge Lodge, Rotoma
1.00 - 1.30pm	Okere Falls/School
1.45 - 2.30pm	Hamurana Store
3.00 - 3.20pm	Mamaku School
3.25 - 3.45pm	Mamaku Store

The Mobile Library carries a good selection of

- * Adult and Childrens
- * Fiction
- * Non-fiction
- * Large print
- * Magazines
- * Talking books
- * New Zealand Fiction & Non-fiction
- * Music Cassettes and C.D.'s
- * Videos

Special requests can be made for specific items.

TROUT RELEASE PROGRAMME

Liberations and Datawatch Returns

Excluding releases into Waikaremoana the spring programme was completed with the liberation of 21,000 marked fish (left pelvis clip) and 6,000 floy tagged fish into Rotorua lakes.

<u>Lake</u>	<u>FC</u>	<u>FT</u>	<u>TOTAL</u>
Tarawera	3000	*2000	5000
Rotoiti	5000	500	5500
Okataina	1000	500	1500
Rotoma (Rainbow)	2000		2000
Rotoma (Tiger)	1000		1000
Rotoehu	1500	500	2000
Rerewhakaaitu	2000	500	2500
Okareka	5000	500	5500
Rotorua		1000	1000
Okaro	250		250
Ngapouri	250		250

FC = Fin clipped. FT = Floy tagged.

As with all tagging programmes, very much depends upon having the tags returned to Eastern Region Fish and Game Council along with details of date caught, length and weight of fish.

CALLING EAST ROTOITI

Kia Ora mai ano Ngati Kawiti Tamatea a Atutahi me Ngati Pikiao ki te rawhiti mai Tapuaeharuru ki Mata-whaura, puta noa, puta noa.

Through this newsletter, I wish to make it known to all our 'whanaunga' residing in the eastern area of Lake Rotoiti that over this past year, I have been getting 'the feel' of things as a committee member of the Association and representing, in particular, the owners of Tautara Blocks 21B3 (above the quarry at Tapuaeharuru) and 22 Sec 3C (beyond Te Ara a Hinehopu, between there and the Urupa) but generally all rate-payers on that side of the lake.

I replaced Netahio (Theo) Tait who left to live in Wellington. Through this issue, I would like to advise anyone Maori or non-Maori that if you wish to have input to any matter relating to the business of the Association, please do not hesitate to contact either myself (Ph3487783) or Jim or Mary Stanton (Ph3624690).

Tena Koutou Katoa - Hapi Winiata

FOR EVERYTHING YOU NEED IN BUILDING & HARDWARE

- TIMBER
- HARDWARE
- BATTS
- NAILS
- BOLTS
- SAND
- CEMENT
- BUILDERS MIX
- UNDERFLOOR INSULATION

- HARDIES PRODUCTS
- PANEL PRODUCTS
- GIB BOARD
- WEATHERBOARDS
- TIMBER PANELLING
- FASCIAS
- DECKING
- GARDEN CENTRE
- PREHUNG DOORS

- MOULDINGS
- PRENAILS
- TRUSSES
- FENCING
- SEALANTS
- CLEARS
- CEDAR
- STEPS
- TOOLS

OPEN
EVERYDAY
OVER THE
HOLIDAYS
EXCEPT
CHRISTMAS
DAY

HOURS:
Mon-Fri:
7.00am to 5.00pm
Saturday:
8.00am to 4.00pm
Sunday:
9.00 am to 3.00pm

PlaceMakers

WE'VE GOT IT ALL TOGETHER

Te Ngae Road, Rotorua

Phone 07 - 345 6892

Pleased
to be the
Major
Sponsor
of the
Lake Rotoiti
Ratepayers
& Residents
Association.

FISHING NEWS

Opening day 1 October. It was estimated that 70 anglers were lined up at 5.00am on both sides of the Ohau Channel to about 750 metres downstream from the weir. Approximately 120 fish were landed before 9.00am. Many anglers sat out from midnight onwards to secure their 'possie'. It was a cold rough night with the wind roaring like an express train but that didn't deter the hardy. Most fish caught were in prime condition which contributed to an impressive opening. Fisheries Officer, Rod Pitkethley said that ERFGC staff had interviewed 155 anglers on Lake Rotoiti who had caught a total of 112 fish, the largest weighing in at 4.8kg (10lb 10oz).

Behind Lake Taupo, Lake Rotoiti is the most popular lake in New Zealand as far as angler fishing days go.

Delta Danger. Sadly, in October, another drowning occurred at the Delta (where the Ohau Channel enters Lake Rotoiti). A young trainee Japanese fishing guide became the fifth angler drowning in this area over recent years. Wading anglers are warned to avoid fishing there if the Channel is running dirty. Lake Rotorua is a shallow lake and, when high winds occur, the bottom sediment and weed is stirred up turning the Channel chocolate brown. In clear conditions, the 'drop-off' at the Delta is easily visible but not otherwise discernible to those unfamiliar with the area. As trout frequently cruise the lip, it is more productive to stand well back from the 'drop-off' on casting. This provides two bonuses - safety and better fishing opportunities.

War on poachers. Great to see poacher arrests featuring in the local newspaper of late. Headlines such as 'Nineteen Poachers to Face Charges' and 'Poachers Cost City Dearly' make welcome reading to the majority of fishing enthusiasts who play the game fairly. ERFGC Executive Officer, Steve Smith openly admits that compliance (law enforcement) has not been given priority on his agenda over the past two years but emphasises that it will have a higher profile in the new Operational Work Plan. Many small local streams are regarded as 'suicide streams' ie what goes up to spawn never returns. The Ohau Channel is netted on average once a month according to Fisheries Officer Matt McDougall.

ABOUT TROUT is an exhibition at the Rotorua Museum running from October 97 to March 98. Do see it, it is well worth a visit - wonderful mounted trout, old historical fishing photographs and general memorabilia.

Life is not a dress rehearsal. We only get one shot at it! So take more trips, watch more sunsets, explore more lakes and rivers. No one ever said on their deathbed, 'I wish I'd spent more time at the office'.

Go Fishing Friend. Soft casts and tight lines.

Ohau Channel Fish Pass. After disappointing delays and two failed attempts, Environment BOP's engineering division installed the fish pass on 29 October. As previously explained, the pass is designed to enable smelt to traverse the weir on their annual migration through to Lake Rotorua.

This has proved increasingly difficult since the installation of the Control Gates and was agreed to following submissions principally by Maureen Doherty and Frank Thompson (on behalf of OAK - Ohau Anglers' Klub) as part of the revised Lake levels consent late in 1996.

The pass remains experimental and at this stage still needs fine tuning, particularly regarding a velocity barrier at the point of attachment. If successful, a second pass will be similarly attached also downstream of the weir on the Ohau Camp side.

In the meantime, smelt are bottled up on the camp side in their thousands. Only a relatively small number manage to dribble through at optimum times. Smelt are the principal forage food of the Lake Rotorua trout and thus of vital importance to the fishery'

The Lake Rotorua entrance to the Ohau Channel has always been a favourite swimming area, especially with the local children. Already, curiosity has seen some kids putting small rocks in the fish pass and actually laying inside it.

IT IS IMPORTANT FOR THE SUCCESSFUL OPERATION OF THE FISH PASS THAT IT NOT BE INTERFERED WITH IN ANY WAY. A sign will be shortly installed on the adjacent wall explaining this requirement. If you spot anyone doing this, please ask them not to. It would be appreciated if parents could pass this message on to children who swim in this area.

MOUREA HAPPY ANGLER STORE

* CONED ICE CREAM *
* VIDEO FOR HIRE *
* GROCERIES * MAGAZINES *
Fresh Bread - Hardware
Fishing Licences - Lures & Flies

Phone 362 4709

TE NGAE PHYSIOTHERAPY

Mary Bradley & Laurice Smith



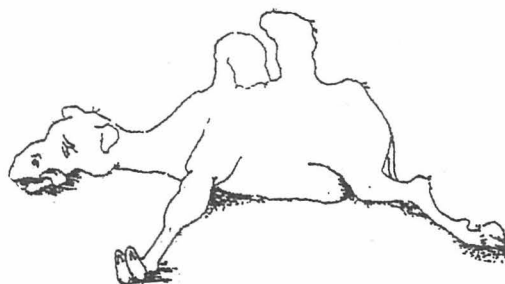
- Manipulative Therapy
- Sports Injuries
- Acupuncture
- Feldenkrais

8am - 6pm 5b Owhata Road ROTORUA
Wheel Chair Access Off Road Parking

ph/fax 0-7-345 6915

ROTORUA Farm & Industrial Pumping

**DON'T LET
YOURSELF
RUN DRY**



32 White Street
P.O. Box 1176
Ph (07) 347 8552
A/H 332 3366

Total Water Pump Sales & Service

Lake Levels

We have now had almost a full year operating under the new regime in which Rotoiti lake levels have been maintained around a target level of 279.15m above the Moturiki Datum. The aim was to eliminate as far as possible past problems which saw levels fluctuating too greatly and insufficient urgency in responding to such situations.

This year has seen a vastly improved scenario which has, for the most part, satisfied the majority of residents and users. Some teething problems have occurred, mainly through the operation still being subject to some trial and error. The co-operation of Environment BOP's engineering staff has contributed much to the overall success of the present scheme. Close monitoring by our own watchdogs, Michael Gill and Heather Goodwin and prompt liaison with EBOP on the occasional hiccup has been instrumental in providing a sound information base for the review due in 6 months time.

It has been generally noted that any drop below the target level causes most problems with margin erosion and weed growth and grounding of boats at mooring. Above RL279.225 gives rise to flooding at Hinehopu especially. It is believed that it would be beneficial to raise the target level to RL279.165 in the future to provide optimum operation. As you can see, this is all within a relatively small set of parameters and highlights the need for such close tolerances. Any prolonged dry spell over this coming summer will be a further test to success.

Lakeweed Control

We were concerned earlier in the year over the possible effects of transfer of responsibility for lakeweed control from DOC to LINZ (Land Information NZ). Having expressed these concerns to local MP Max Bradford, we gained assurances that the transition would not be detrimental to current programmes. In fact, more recent meetings with LINZ and NIWA (National Institute for Water and Atmospheric Research) staff have further satisfied our expectations regarding future management.

This year will see spraying of all problem areas around the lake commencing sometime in December. Watch out for notices in District newspapers and local notice boards. Attempts are also being made to obtain ECNZ's harvester for a short period to perform an experimental operation in part of Okawa Bay. The 'Down Under' harvester used earlier in the year around Otaramarae and the Okere arm has still to be evaluated in terms of success. One of the problems is that present machinery has limited ability in terms of cutting widths and depths and disposal costs are relatively high. Certainly, current estimates put the cost of harvesting significantly higher than spraying.

Rotorua Lakes Bylaw

Environment BOP have recently ratified the revised Rotorua Lakes Bylaw 1997. Legal opinion was that the existing Bylaw contained a great many rules and regulations which should not constitute part of a Bylaw and would be more appropriately addressed in other documents such as the District Plan. Following concerns raised by both RDC and ourselves, some omissions were reinstated and whilst we would have preferred to see all aspects of lake regulatory control in a unitary document, it is now accepted that the Bylaw is primarily for navigation and safety matters and issues such as foreshore structures, private jetties etc will become part of RDC supplementary regulations.

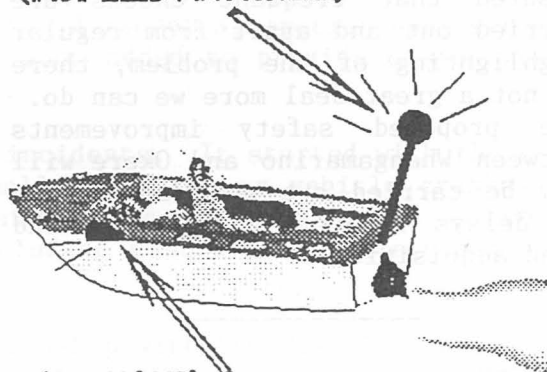
NAVIGATION LIGHT REQUIREMENTS FOR SMALL CRAFT AT NIGHT.

These rules should be followed by all craft out on the lakes after dark. It is a strict requirement under international rules and current NZ Statutes. A fine of up to \$1,000 is applicable for non compliance. Basically, it states that **ALL** power driven craft must show at least an **all round white light**. If they are over seven metres in length and/or travelling at over seven knots **red and green side lights** must also be carried at least one metre lower than the white light. Some power boats have stern lights fitted. This is OK, but a masthead light must also be carried with the arc of visibility from right ahead to $22\frac{1}{2}$ degrees abaft the beam on either side.

NOTE: Sailing vessels do not carry a white light shining ahead, unless they are under power. This is the basic difference between power and sailing vessels. Sailing vessels under way and **small boats under oars** which are less than seven metres in length do not have to exhibit a fixed light but must have a torch or spotlight handy to illuminate their craft in sufficient time to avert a collision.

ALTERNATIVE ONE:

**ALL ROUND WHITE LIGHT
(INSTALLED ANYWHERE)**

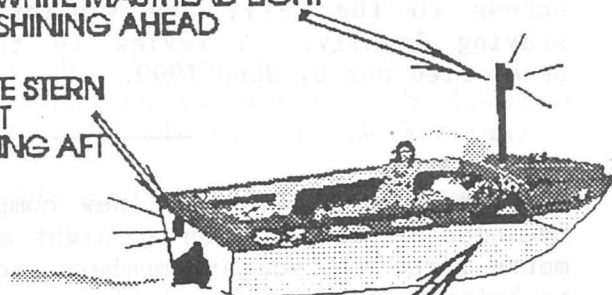


**SIDE LIGHTS
(NOT REQUIRED IF LESS THAN 7 KNOTS)**

ALTERNATIVE TWO:

**WHITE MASTHEAD LIGHT
SHINING AHEAD**

**WHITE STERN
LIGHT
SHINING AFT**



**RED & GREEN SIDE LIGHTS
AT LEAST 1 METRE LOWER THAN WHITE LIGHT**

AT THE OKERE FALLS STORE...

LIQUOR STORE



**Our Off Licence is open
7.00am - 7.00pm
Monday - Saturday**

*We carry a full range of canned beer,
wines and spirits for your convenience
and our prices are sharp.*

**Cans from \$11.95 a dozen
Bulk spirits from \$8.95 a litre**

by Boat or by Car, you know where we are

FOR POSITIVE REAL ESTATE RESULTS

Buying or Selling

Betty Stewart
Lakes Specialist



Phone (07) 345 3700
Fax (07) 345 3703
A/H (07) 345 9162
Mobile (025) 997 711



The Professionals

**McDowell
Real Estate Ltd**

M.R.E.I.N.Z.

Cnr Te Ngae & Tarawera Roads
P.O. Box 1134
Rotorua, DX JP30011

SNIPPETS

We continue to receive calls from residents concerned about traffic speed through Okere and Rotoiti and these are dutifully passed on to RDC Road Safety Committee. We are assured that frequent checks are carried out and apart from regular highlighting of the problem, there is not a great deal more we can do. The proposed safety improvements between Whangamarino and Okere will now be carried out next summer due to delays in funding approval and land acquisition.

We forwarded a submission to Environment BOP's Draft Regional Transport Plan requesting that a daily mini-bus service to Okere and Rotoiti be considered to accomodate increasing local resettlement, those unemployed or working with no other access to the city, and visitors staying locally. A review is to be carried out by June 1999.

Manupirua Hot Pools. The new composting toilets are working well. Just a reminder to use caution at night and observe the speed limit within the 200 metre zone. If you are members, your dues are now payable. If not, remember to bring your coins for the honesty box when coming in for a swim!

LAKE MAINTENANCE

NOEL & SUZANNE RUEBE

OKERE FALLS

LAWNS - GARDENS - RUBBISH REMOVED - TREES CUT -
PROPERTY SECURITY - PUMP MAINTENANCE - PAINTING -
TRACTOR WORK - SOIL & METAL CARTAGE - BOAT HIRE -
BOAT MAINTENANCE

PHONE 0-7-362 4814 MOBILE (025) 948 730
P.O. BOX 495 ROTORUA

DEANS CANVAS & UPHOLSTERY CO

2/42 White Street • Rotorua • (07) 348 7209



Specialists in:

- Window Awnings
- Caravan Awnings
- Trampoline Mats
- Tarpaulins
- Boat Canopies & Covers
- Marine Upholstery
- Furniture Upholstery
- Calf Covers
- All Repairs & Restitching

Rotorua: Colin Deans (07) 348 3753 A/H

2/42 White Street • Rotorua • (07) 348 7209

LAKE ROTOITI WOODEN BOAT REGATTA

WAITANGI DAY - FEB 6 1998 - MARK YOUR CALENDARS NOW

TO BE HELD AT TE ARERO BAY (TRAILER SAILOR BAY) or CHERRY BAY
(Depending on wind conditions)

EVERY WOODEN BOAT WELCOME !!!

BIG, SMALL, FAT OR THIN, LONG OR SHORT, ANY AGE ANY SHAPE, ANY SIZE

PRIZES, PICNICS AND FUN FOR ALL THE FAMILY

IT WILL BE A GREAT DAY !!!!

All the details on Registration Forms at Okere Falls Store, Happy Angler Store, Emery's Store
and Manupirua Hot Springs

Sponsors needed, please contact Lindsay Brighthouse 0-7-362 4876 or Gillian Marks 0-7-362 4804
(Area set aside for fizz boats)

WEST ROTOITI FIRE FORCE NEWS

The West Rotoiti Volunteer Fire Force and associated Incorporated Society have recently held their AGM's. There was a good turnout and most of the committee have returned for another term. Liz Miller has 'retired' after 5 years as treasurer and we thank her for her support and hard work. Next year is the 15th anniversary of the incorporated society and there is likely to be some form of social gathering to mark the event. A recent alteration has been made to the fire station, with a side roller door added to provide easier access for the trailer unit.

We have had an unusual year in terms of incidents. It started with the usual flurry of activity but there were virtually no fires or vehicle crashes for several months over the winter. This pattern has now been broken and we are back to our usual level of activity, including a serious vehicle crash and a house fire all in one day recently.

We continue to have a very positive relationship with the District Council and they now provide substantial support with training and equipment. RDC have provided us with new hand held VHF radios and a base set that is part of their radio network. The Fire Service also continues to provide support. Upheavals in their organisation have not affected the unit to date and it is interesting that the new regional HQ is to be in Tauranga rather than Hamilton. RDC has been investigating options for a new fire engine but this may take some time to come to fruition. West Rotoiti is now part of the new Kaingaroa fire district but we are not sure what the implications are for the Unit.

If you need any water pumping done, contact Dan Arrowsmith (3624477), Johnny James (3624124), Noel Ruebe (3624814) or Ted Boucher (3624815). Subs (\$10) or donations can be sent to our treasurer, Judy Smith (Foster Rd, RD4 Rotorua)

Please ensure that you continue to contact District Council for fire permits.
REMEMBER: IN AN EMERGENCY RING 111.

oooooooooooooooooooooooooooooooooooo

NOTICE OF ANNUAL GENERAL MEETING

OF THE

Lake Rotoiti Ratepayers & Residents Association

to be held at

Pikiao Rugby League Clubrooms, Takinga Street, Mourea

10.00am Sunday, 11th January 1998

AGENDA:

- * Welcome
- * Apologies
- * Minutes of Previous A.G.M.
- * Matters Arising
- * Chairmans Report
- * Election of Committee
- * General Business



1997 COMMITTEE

CHAIRMAN

DEPUTY CHAIRMAN

SECRETARY

TREASURER

COMMITTEE

Jim Stanton

Lindsay Brighthouse

Mary Stanton

Michael Gill

Theo de Lange

Maureen Doherty

Bill Kingi

Gillian Marks

Tai Eru Morehu

Joan Piesse

Fred Whata

Hapi Winiata

Okawa Bay, Mourea

Te Akau Road

Okawa Bay, Mourea

Okawa Bay, Mourea

Otaramarae

Hamurana Road

Parcliffe

Te Akau Road

Maniatutu Road

Gisborne Point

Okere Falls

Rotoiti East

Ph 3624690

Ph 3624876

Ph 3624690

Ph 3624589

Ph 3624342

Ph 3624866

Ph 3457186

Ph 3624804

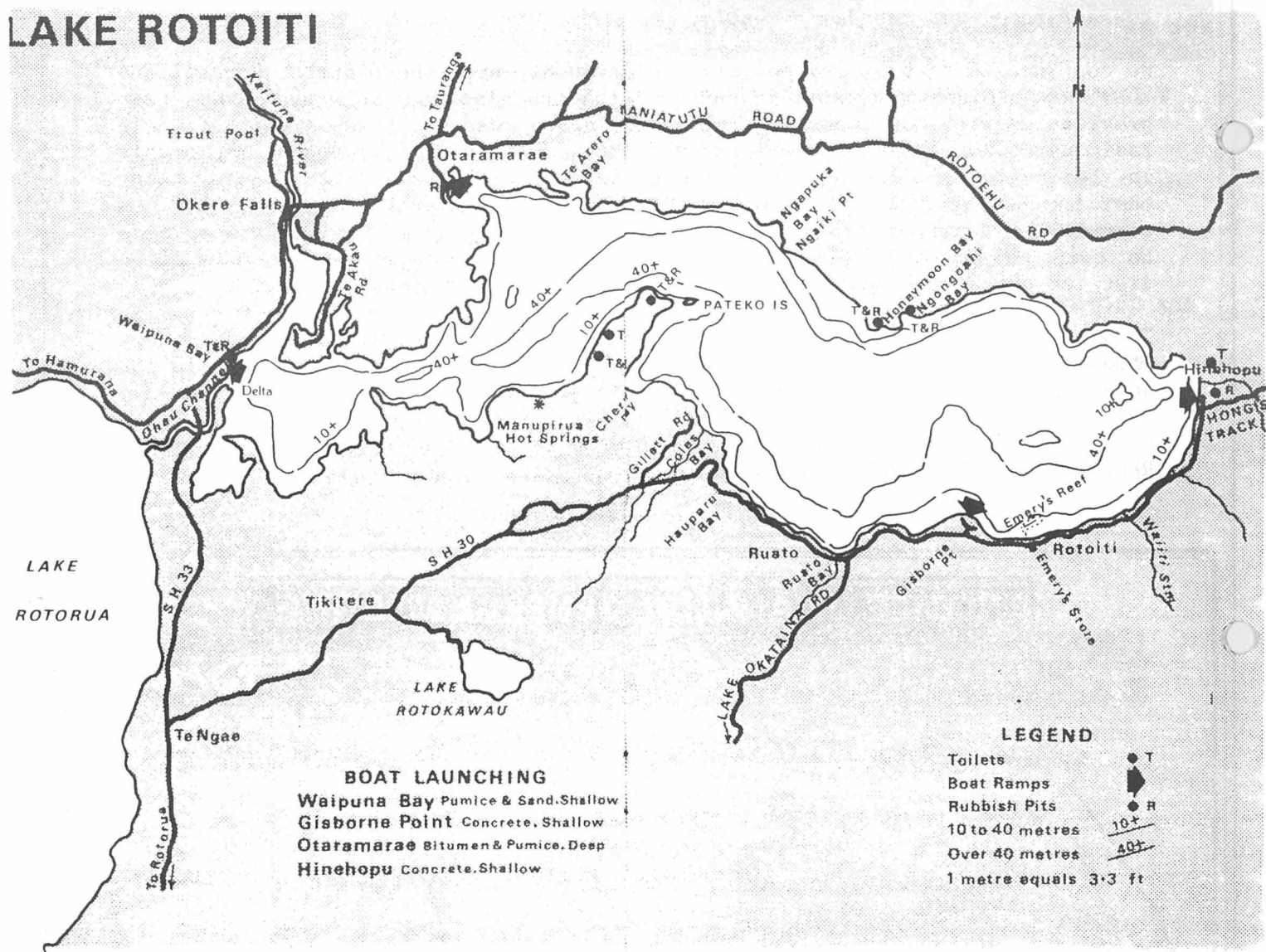
Ph 3624392

Ph 3627755

Ph 3624842

Ph 3487783

LAKE ROTOITI



IMPORTANT & USEFUL PHONE NUMBERS

Fire, Police, Ambulance,
Search and Rescue 111
Accident and Emergency
medical care centre 348 1000
Urgent Pharmacy 348 4385
ROTORUA HOSPITAL 348 1199
Poison Information (03) 474 7000

USEFUL INFORMATION

Dog control - Rotorua District Council	348 4199	Police Station Te Ngae	345 3453
Environmental pollution hotline	0800 738 393	TrustPower emergency number	347 5102
Lakes Inspector Dave Pilkington	348 4199	<i>Rubbish bags are collected on Monday mornings</i>	
SPCA	349 2955		