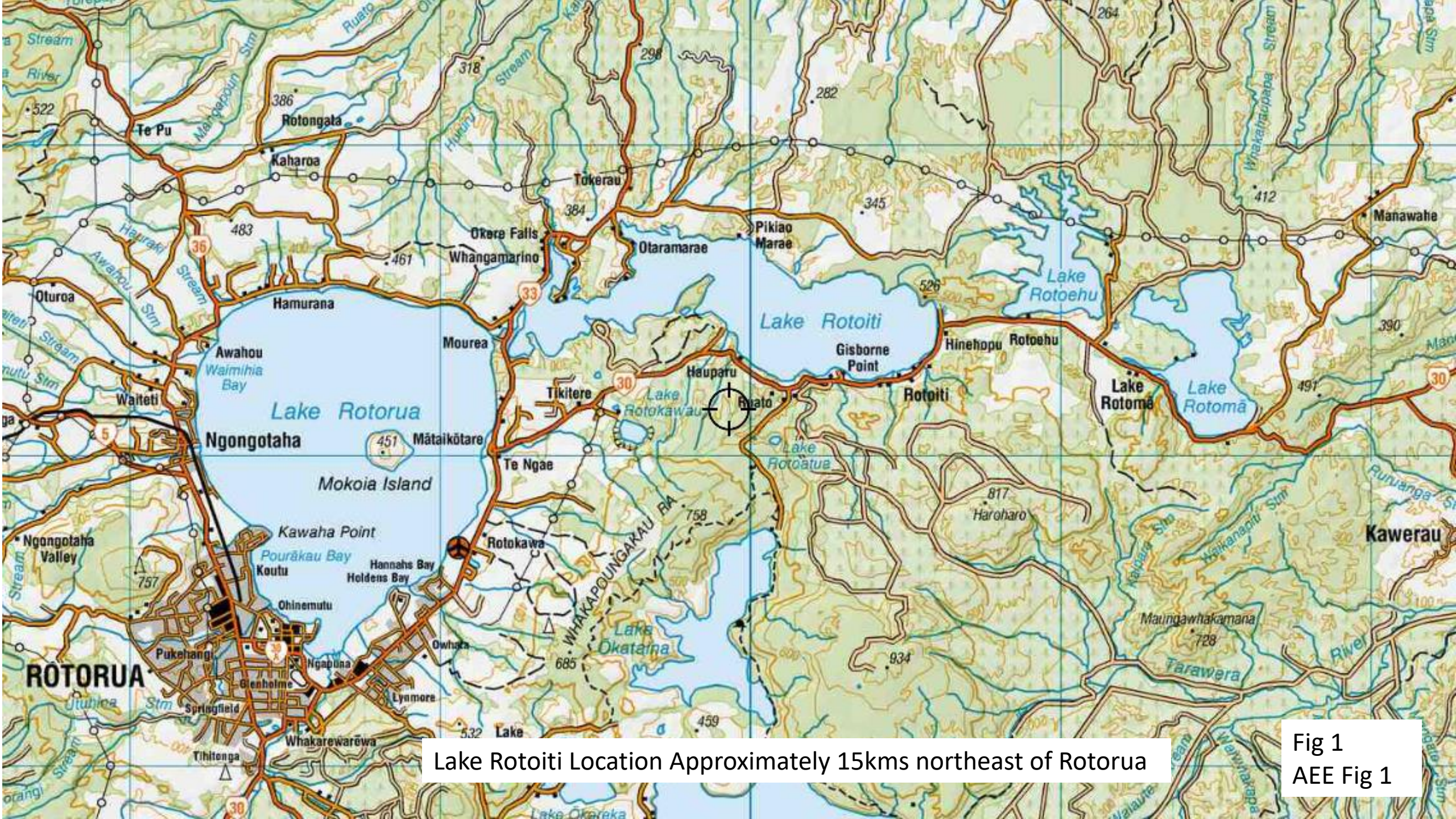


Proposed Variation to Resource Consents 65979 and 65980
Lake Rotoiti Lake Level Control Trial

Appendix 1
Maps, Plans and Figures

Revised 7th August 2021 To Support
Limited Notification Application



Lake Rotoiti Location Approximately 15kms northeast of Rotorua

Fig 1
AEE Fig 1



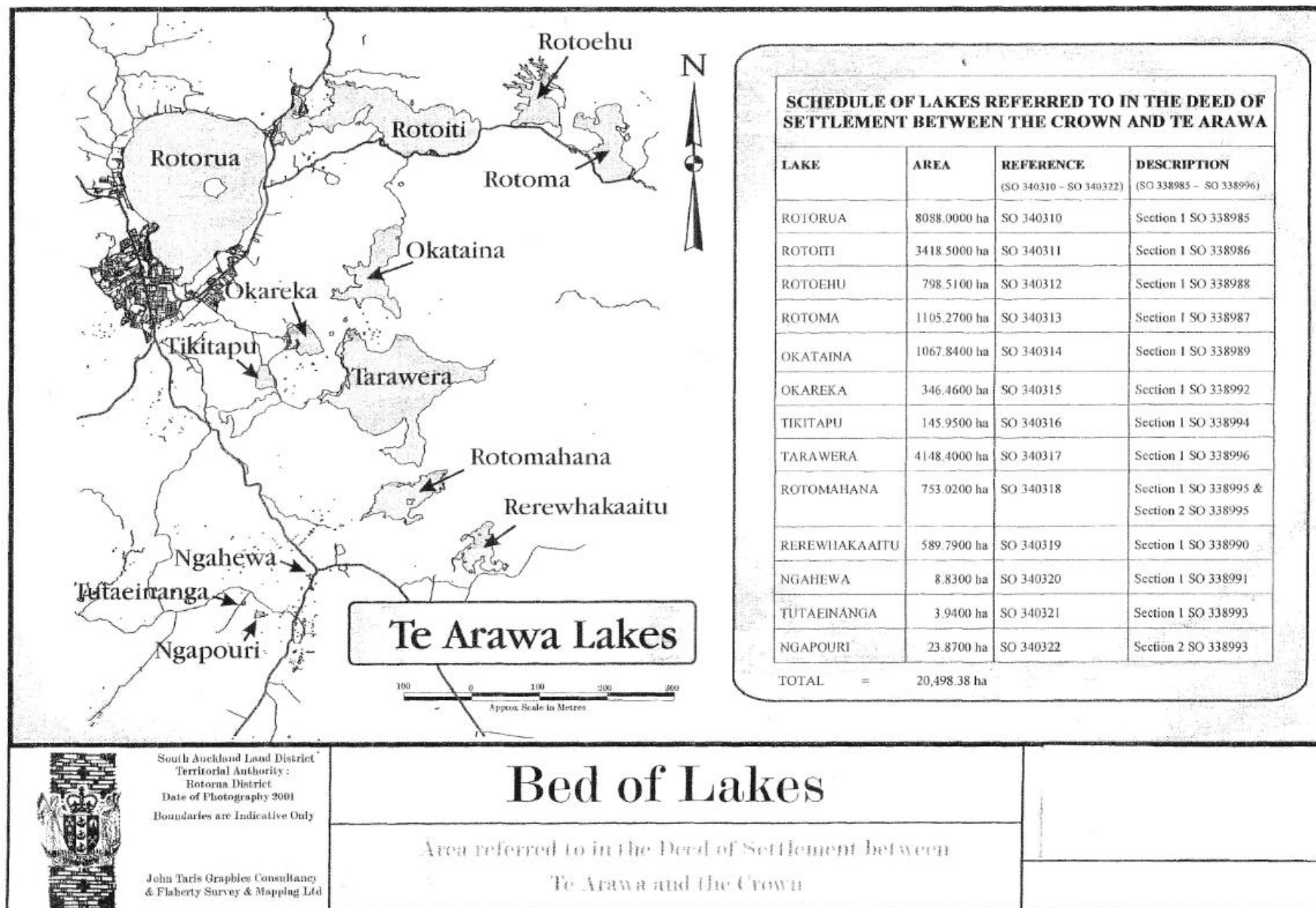
Lake Rotoiti

Lake Rotoiti Location Approximately
15kms northeast of Rotorua

Image © 2020 Maxar Technologies
© 2020 Google
Image © 2020 CNES / Airbus

Google Earth

Fig 2



Lake Rotoiti Legal Description
Section 1 SO 338986

Rainfall - Monthly Totals

Rainfall.Monthly Rainfall Report.Rotorua Lakes.Lake Rotoiti at Okawa Bay

Jul 19, 2020 | 1 of 1

Period Selected: 1920-07-19 00:00 to End of Record

Source Data: Precip Total.Primary@FL289316, Lake Rotoiti at Okawa Bay

UTC Offset: +12:00, Start Time: 2007-02-15 12:30:00, End Time: 2020-07-19 23:00:00

Units: mm

Data Coverage Threshold: 80%

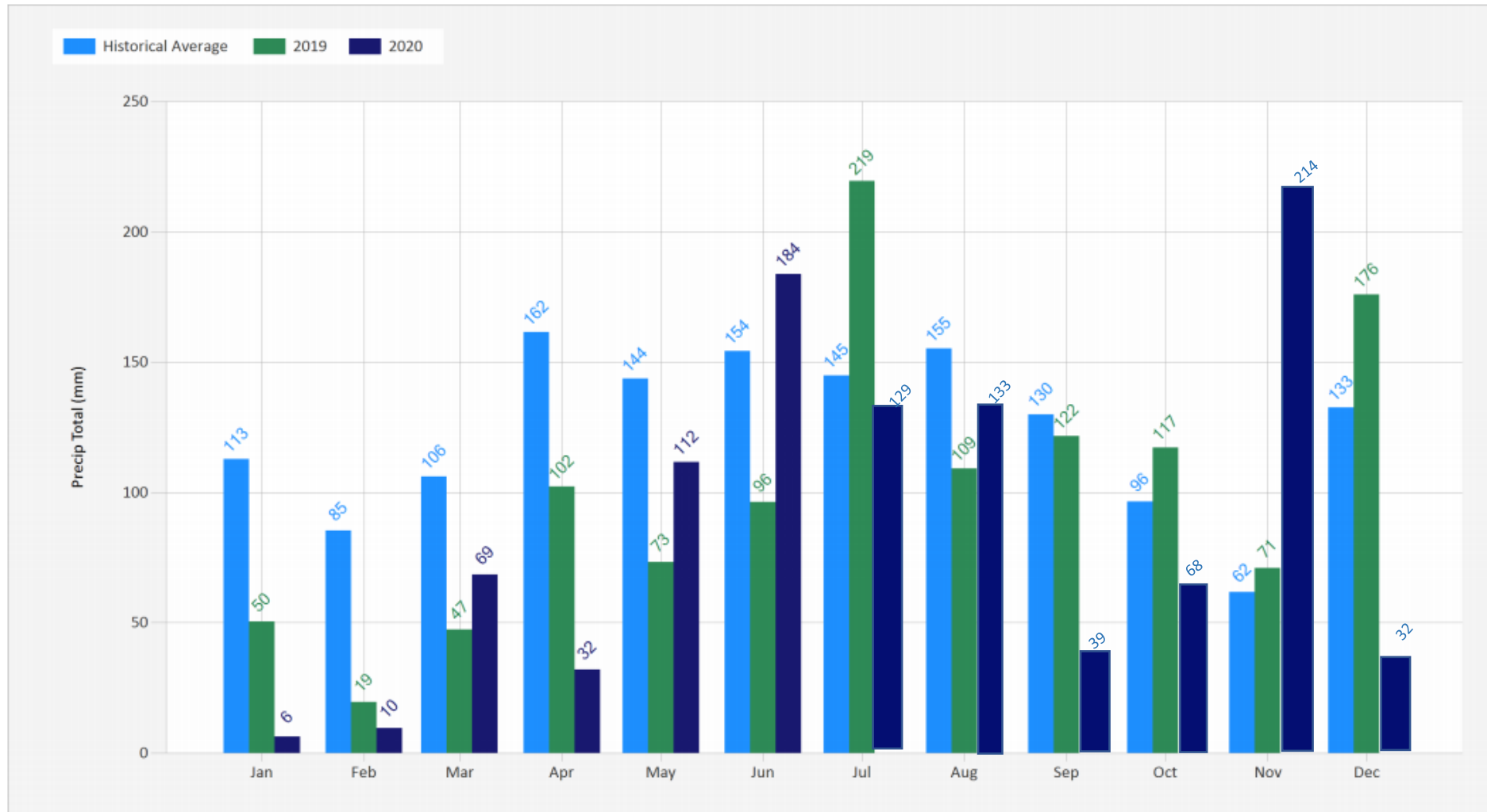
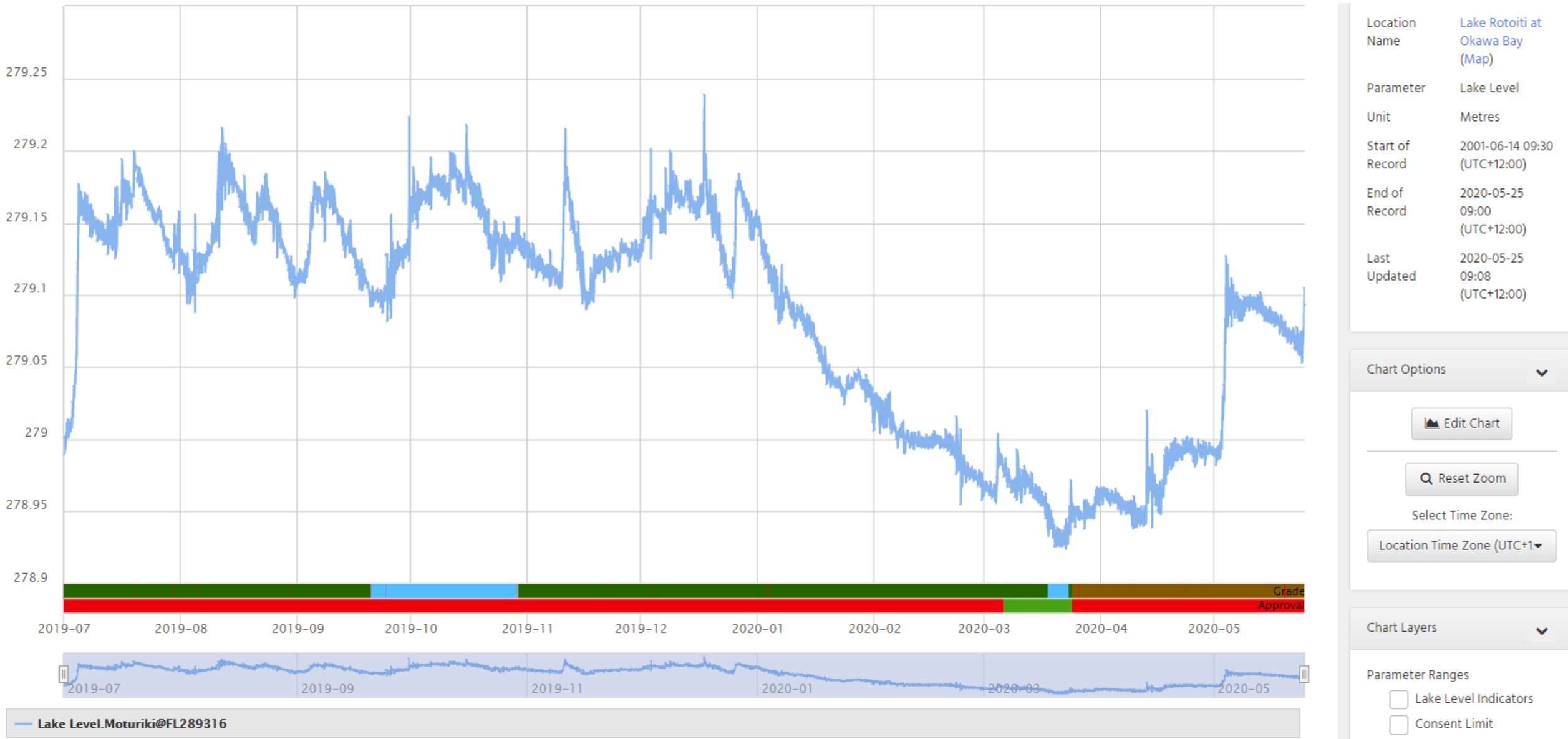


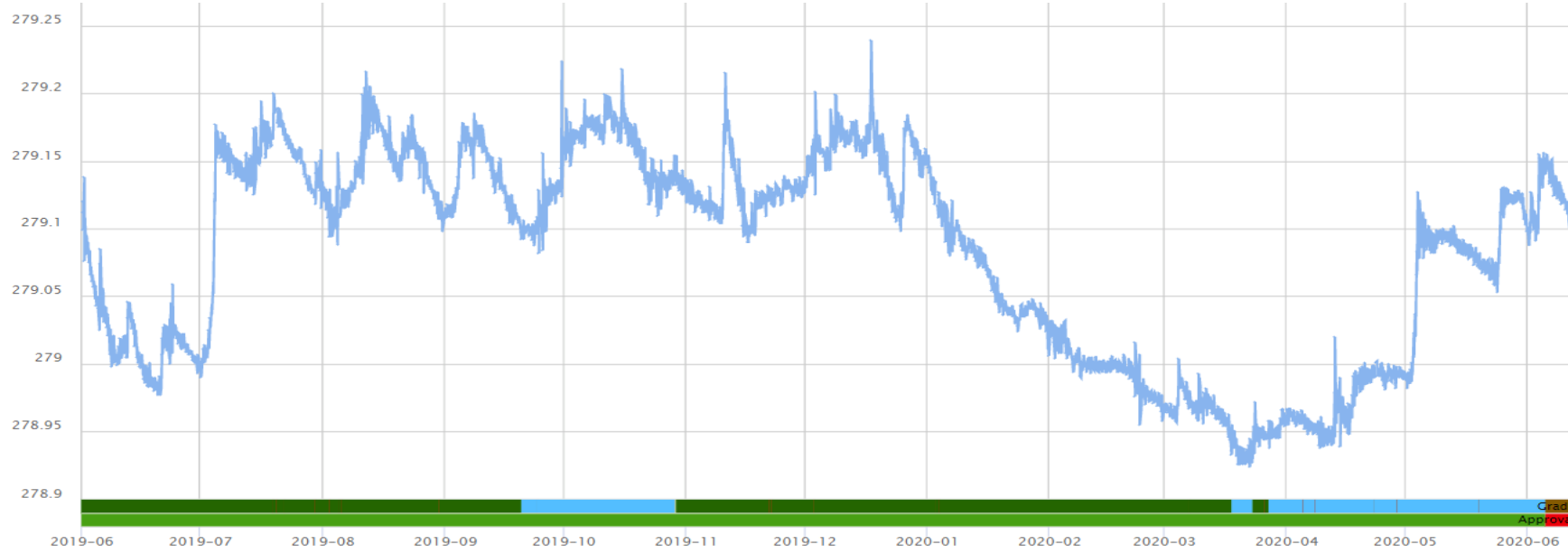
Fig 8 AEE Fig 7



Lake Rotoiti Level July 2019 to June 2020

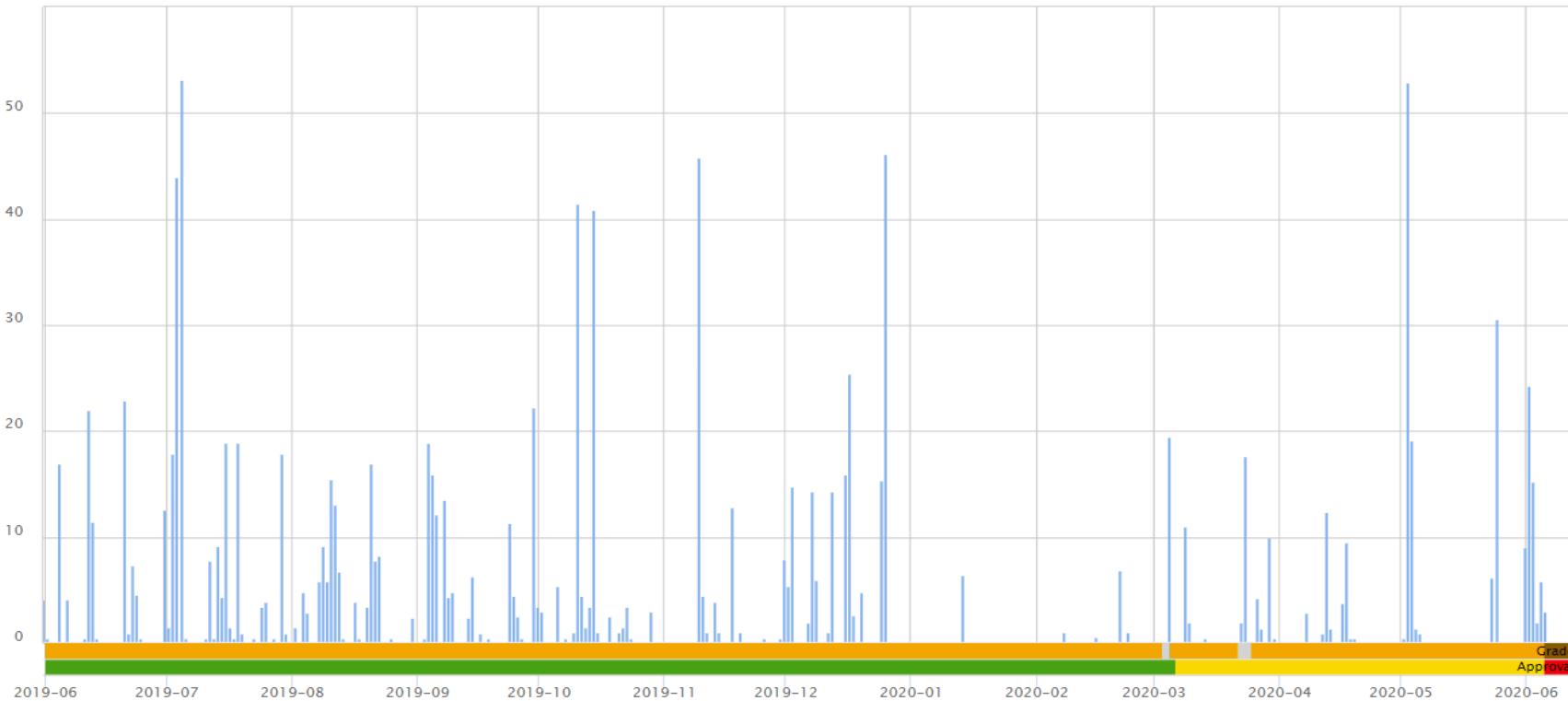
Fig 9

Lake level metres



Lake Level
1 June 2019 to 14 June 2020

Rainfall mm



Rainfall
1 June 2019 to 14 June 2020

Fig 10

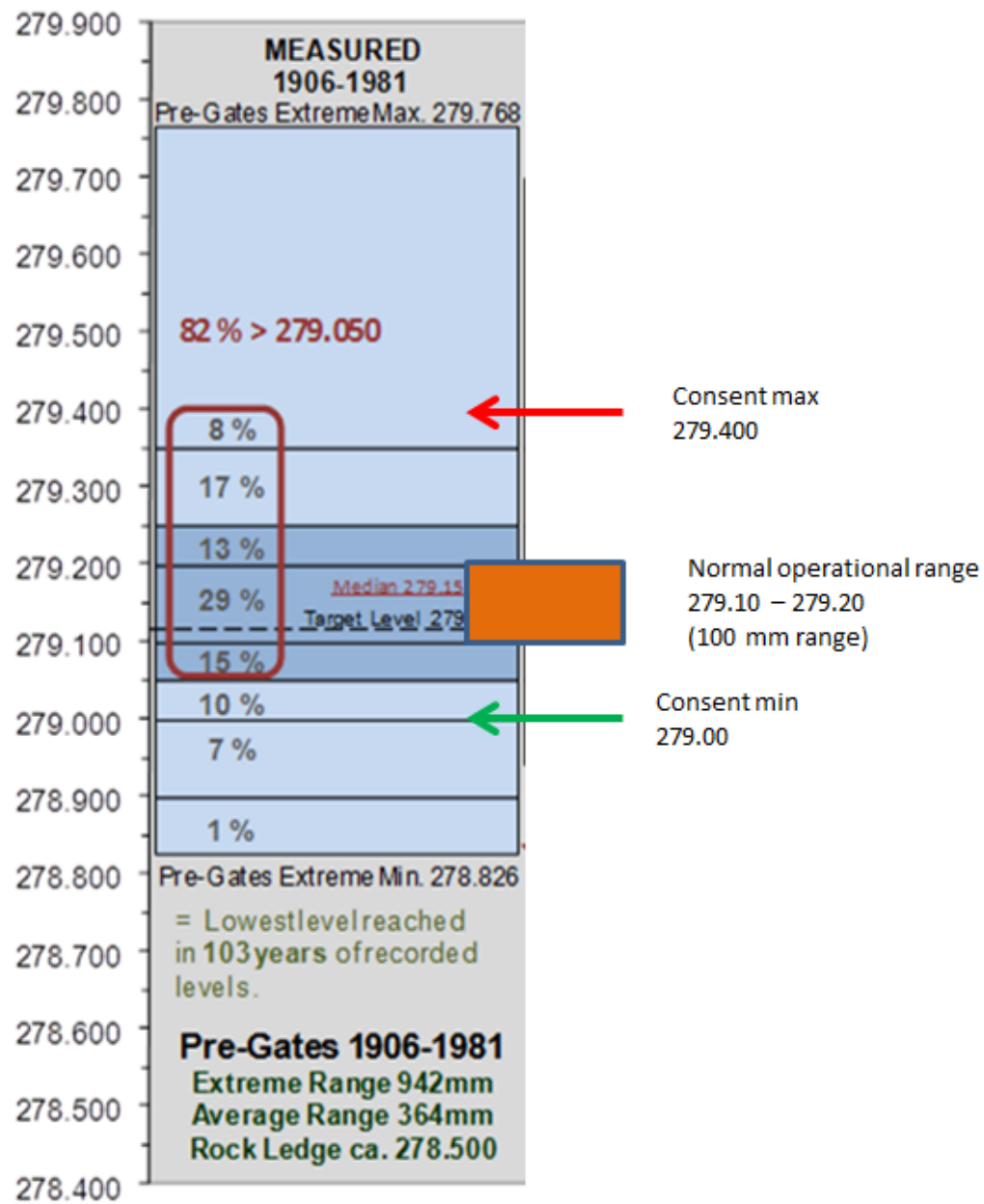


Fig 11 AEE Fig 9

Current Resource Consent Levels

100 Years 1906-2007 plus six consented periods 2013-2019
WITH FLUSH DATA INCLUDED

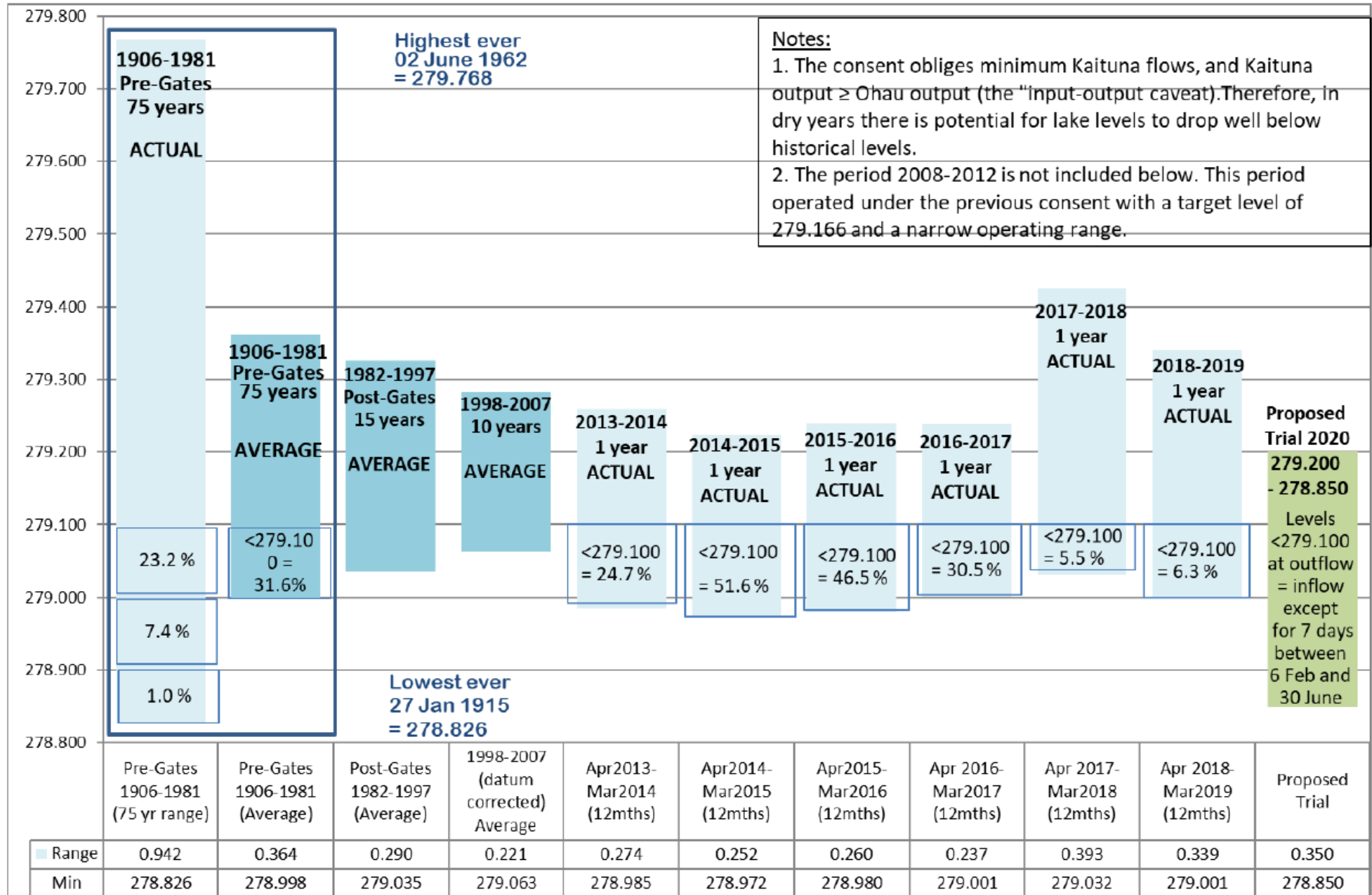


Fig 13

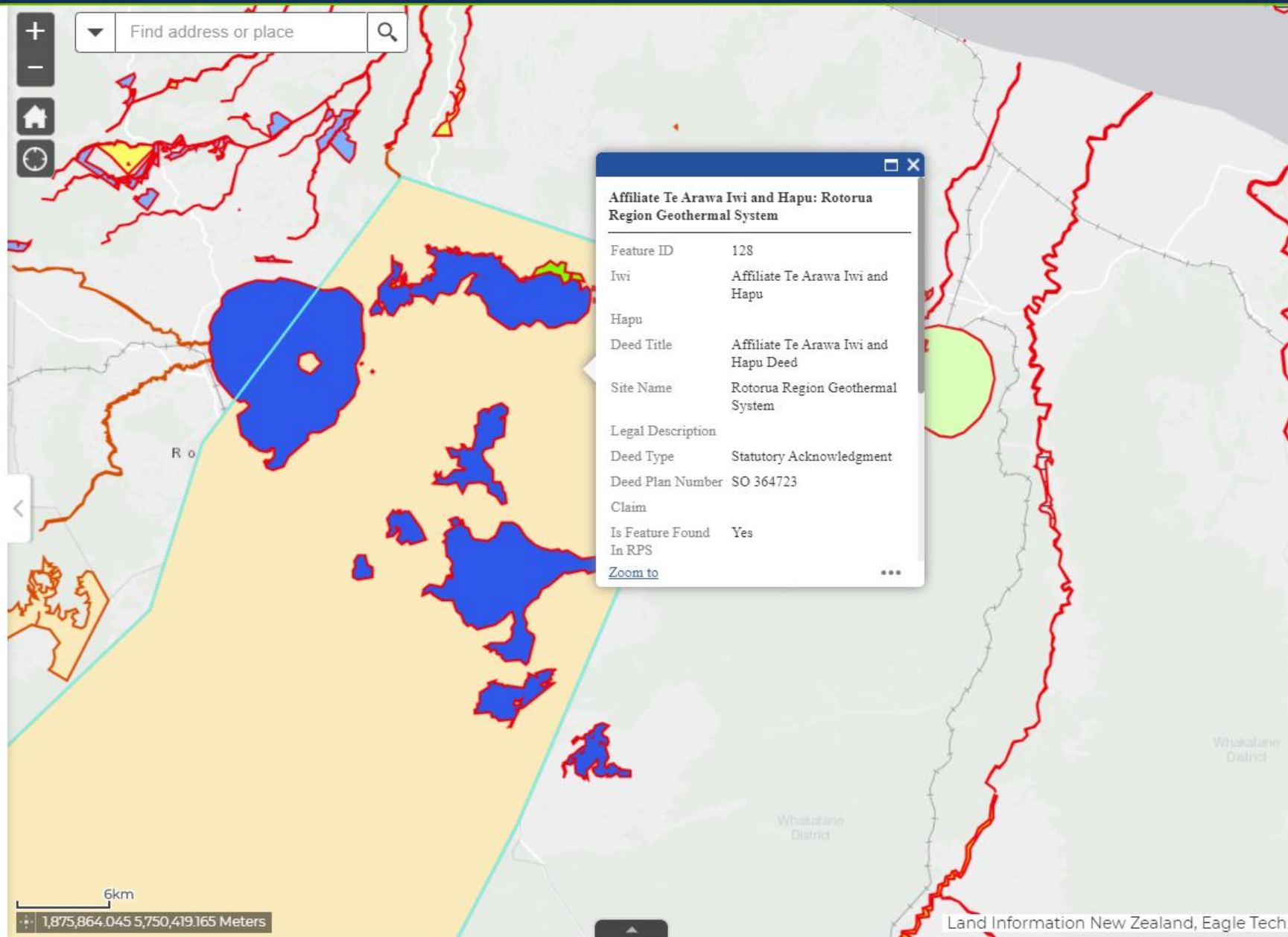


The Ngā Whakaaetanga-ā-Ture ki Te Taiao ā Toi Statutory Acknowledgements in the Bay of Plenty

A Statutory Acknowledgement is a formal acknowledgement by the Crown that recognises the particular cultural, spiritual, historical and traditional association of iwi with a site of significance or resource identified as a statutory area. Statutory Areas only relate to Crown-owned land and include areas of land, geographic features, lakes, rivers, wetlands and coastal marine areas. With respect to bodies of water such as lakes, rivers and wetlands, the Statutory Acknowledgement excludes any part of the bed not owned or controlled by the Crown.

Under the Resource Management Act 1991, Deeds of Settlement and Settlement Legislation achieved with each iwi, regional, city and district councils are required to include statutory acknowledgments in relevant district and regional plans and policy statements, and to have regard to them in resource consent decision making.

Click [HERE](#) for more information.



Statutory Acknowledgement – Affiliate Te Arawa Iwi and Hapu